

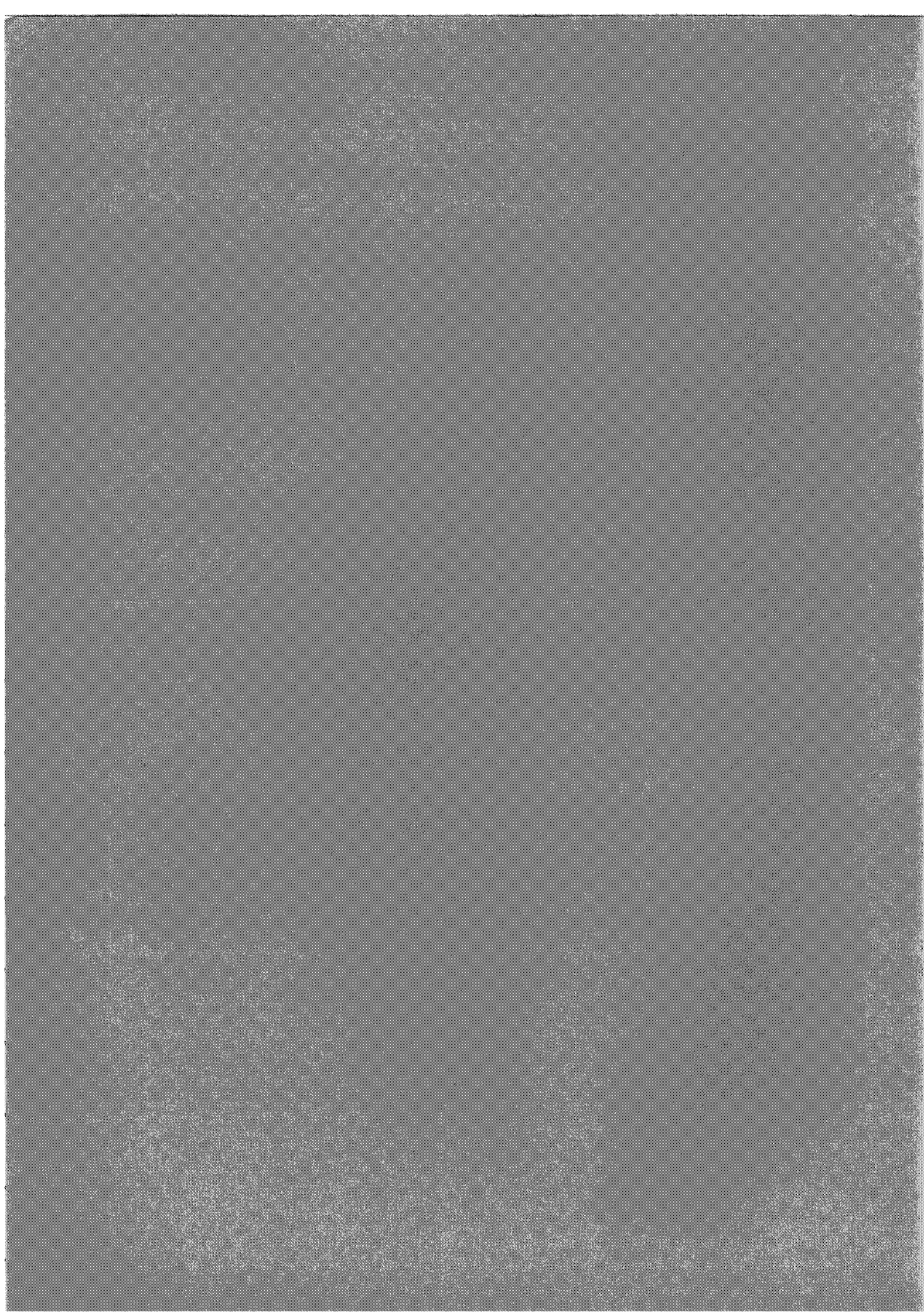
Examination Results Statistics *2007*

for internal use only



**UNIVERSITY OF
CAMBRIDGE**

Student Statistics
PRAO



University Examinations 2007: Contents

	Table	Page
Notes on statistical tables		1
Honours Examinations Results 1960-2007	01a	3
Graph of Honours Examinations Result 1960-2007	01b	5
 Section A: University Tables (white paper)		
University Tables - Tripos Examinations:		
All Candidates	02a	7
Men/Women Split	02b	13
 University Tables - Preliminary and Other Examinations:		
All Candidates	03a	19
Men/Women Split	03b	21
 University Tables - All Examinations:		
All Candidates	04a	23
Men/Women Split	04b	25
 University Tables - All Candidates:		
All Undergraduate Examinations by Ethnic Background	05a	27
All Undergraduate Examinations by Ethnic Background, 2006 Entrants	05b	29
All Undergraduate Examinations by Ethnic Background, 2005 Entrants	05c	31
All Undergraduate Examinations by Ethnic Background, 2004 Entrants	05d	33
All Undergraduate Examinations by Ethnic Background, 2003 Entrants	5e	35
All Undergraduate Examinations by Disability	10a	37
All Undergraduate Examinations by Disability, 2006 Entrants	10b	39
All Undergraduate Examinations by Disability, 2005 Entrants	10c	41
All Undergraduate Examinations by Disability, 2004 Entrants	10d	43
All Undergraduate Examinations by Disability, 2003 Entrants	10e	45
University Tables - Final Medical and Veterinary Examinations	11	47
University Tables - Students deemed to have obtained honours whilst studying abroad	12	49
 Section B: College Tables (green paper)		
College Tables - Tripos Examinations:		
All Candidates	6a	51
Men/Women Split	6b	53
 College Tables - Preliminary Examinations:		
All Candidates	7a	55
Men/Women Split	7b	57
 College Tables - All Examinations:		
All Candidates	8a	59
Men/Women Split	8b	61
College Tables - Unclassified Preliminary Examinations	9a	63

University Examinations 2007

Notes on Statistical Tables

1. Subject to the exceptions listed below, the statistics include all candidates for Tripos and Preliminary examinations whether undergraduates, affiliated students or graduates.
2. The statistics exclude:
 - a) Candidates who took examinations as candidates 'not for honours' (with the exception of Part III of the Mathematical Tripos).
 - b) Candidates who have received allowances (Deemed to have Deserved Honours (DDH) or granted an allowance towards the Ordinary degree) by the Applications Committee of the Council. (Allowances may be granted to candidates who have been ill or who have extenuating circumstances and have thus been prevented from taking an examination or whose performance has been adversely affected as a consequence.)
 - c) Candidates for: (i) Diploma and Certificate examinations; (ii) Oral examinations in Modern Languages; and (iii) Mus. B. examination.
 - d) Unclassified preliminary examinations (in History, Oriental Studies, Classics and Education Studies) and the First Examination for the Degree of Bachelor of Theology for Ministry. These results are shown separately in Table 9a so that they shall not affect percentages in the main tables.
 - e) The results for students who have spent the year studying abroad at the Massachusetts Institute of Technology or studying in Paris as part of the Double Maîtrise. These results are shown separately in Table 12 so that they shall not affect the percentages in the main tables.
3. The heading 'Other Results' includes (but does not differentiate between):
 - a) Candidates who failed their examinations
 - b) Honours candidates who have received an allowance from the Examiners (but NOT the Applications Committee of the Council, who are excluded - see 2b above).
 - c) Candidates about whom an application has been submitted to the Applications Committee but who were still awaiting a decision at the time these tables were produced.
 - d) Candidates who have been granted a deferral.
4. In Part III of the Mathematical Tripos, a pass with distinction or merit has been counted for statistical purposes as Class I, and a pass as Class I division (1). This applies whether or not the candidate is a candidate for honours.
5. In Part II of the Manufacturing Engineering Tripos and Part IIB of the Engineering Tripos, a pass with distinction has been counted for statistical purposes as Class I, a pass with merit as Class II division (1), a pass as Class II division (2).
6. The class obtained in each language by candidates for Part 1A of the Modern and Medieval Languages Tripos has been counted as half a class. This explains why, in some years, the number of candidates under each class division for this Tripos and in the totals are not whole units.

(continued...)

7. Third-year pre-clinical medical and veterinary students are included under the Tripos examination for which they were entered.
8. Tables providing disability information (10a - 10e) have been revised since last year. The category 'No known disability' has been replaced by 'No disability', leading to a significant shift from this category to 'Not known'.

Please note that these statistics are provided for internal purposes only. Information relating to specific Colleges will not be released without their consent, unless there is a legal requirement to do so. Tables giving figures for the whole University will be published in the 'Student Numbers' special edition of the *Cambridge University Reporter*, and may then be released outside the University with suitable acknowledgment.

**Planning and Resource Allocation Office
University Offices
Email: student.statistics@admin.cam.ac.uk**

September 2007

Honours Examinations 1960-2007

	Class I		Class II Division (I)		Class II Undivided		Class II Division (2)		Class III		Other Results		Total Candidates	
	No.	%	No.	%	No.	%	No.	%	No.	%	No.	%	No.	%
1960	444.5	10.3	1,036.5	24.1	173.0	4.0	1,524.5	35.5	949.5	22.1	172.0	4.0	4,300	
1961	453.5	10.5	1,060.0	24.5	185.0	4.3	1,552.5	35.9	907.0	20.9	172.0	4.0	4,330	
1962	424.5	9.8	1,029.5	23.7	181.0	4.2	1,563.0	36.0	903.0	20.8	238.0	5.5	4,339	
1963	459.0	10.6	1,076.5	24.8	154.0	3.6	1,544.5	35.7	896.0	20.7	202.0	4.7	4,332	
1964	496.5	11.2	1,099.0	24.9	159.0	3.6	1,585.0	35.9	904.5	20.5	177.0	4.0	4,421	
1965	529.0	11.6	1,238.5	27.2	180.0	3.9	1,597.5	35.0	821.0	18.0	194.0	4.3	4,560	
1966	646.5	11.3	1,275.0	27.2	171.0	12.5	1,755.5	30.6	1,151.0	20.0	198.0	3.4	5,743	
1967	730.5	12.2	1,399.0	23.3	616.0	10.3	1,941.0	32.3	1,038.0	17.3	283.5	4.7	6,008	
1968	730.5	12.2	1,369.0	22.9	628.0	10.5	1,954.5	32.7	1,086.0	18.2	214.0	3.6	5,982	
1969	746.5	12.3	1,532.0	25.3	646.0	10.7	1,951.5	32.2	962.0	15.9	215.0	3.6	6,053	
1970	775.5	12.6	1,666.5	27.0	578.0	9.4	1,913.5	31.0	1,000.5	16.2	242.0	3.9	6,176	
1971	806.0	12.6	1,668.5	26.2	703.0	11.0	2,041.0	32.0	918.5	14.4	240.0	3.8	6,377	
1972	821.5	13.2	1,701.5	27.3	633.0	10.1	1,996.0	32.0	953.0	15.3	134.0	2.1	6,239	
1973	824.0	12.8	1,739.0	26.9	682.0	10.6	2,144.5	33.2	919.5	14.2	145.0	2.2	6,454	
1974	818.0	12.4	1,696.5	25.7	1,010.0	15.3	1,993.5	30.2	917.5	13.9	158.5	2.4	6,594	
1975	831.0	12.5	2,039.0	30.6	643.0	9.6	2,176.0	32.6	802.0	12.0	174.0	2.6	6,665	
1976	866.0	13.1	1,935.0	29.3	656.0	9.9	2,185.0	33.1	808.5	12.2	151.5	2.3	6,602	
1977	917.0	13.1	2,134.0	30.5	697.0	10.0	2,317.0	33.1	804.0	11.5	123.0	1.8	6,992	
1978	918.0	13.1	2,201.0	31.5	667.0	9.5	2,288.5	32.8	778.0	11.1	134.5	1.9	6,987	
1979	943.0	12.9	2,295.0	31.5	676.0	9.3	2,385.5	32.7	855.0	11.7	135.5	1.9	7,290	
1980	1,002.5	13.1	2,461.5	32.1	676.0	8.8	2,532.0	33.1	878.5	11.5	110.5	1.4	7,661	
1981	1,002.5	12.9	2,513.5	32.4	705.0	9.1	2,544.5	32.8	891.0	11.5	101.5	1.3	7,758	
1982	998.5	12.5	2,664.0	33.3	715.0	8.9	2,597.0	32.5	891.5	11.2	128.0	1.6	7,994	
1983	1,029.5	12.9	2,809.0	35.1	737.0	9.2	2,477.5	30.9	839.5	10.5	117.5	1.5	8,010	
1984	1,022.0	12.8	2,834.5	35.6	704.0	8.8	2,469.5	31.0	813.5	10.2	127.5	1.6	7,971	
1985	1,090.0	13.8	2,801.0	35.5	752.0	9.5	2,399.0	30.4	733.5	9.3	108.5	1.4	7,884	
1986	1,136.0	14.2	2,894.0	36.1	781.0	9.7	2,419.0	30.1	672.5	8.4	124.5	1.6	8,027	
1987	1,206.5	14.9	3,107.5	38.4	749.0	9.3	2,303.5	28.5	617.0	7.6	109.5	1.4	8,093	
1988	1,199.0	14.7	3,067.0	37.7	699.0	8.6	2,425.5	29.8	627.0	7.7	117.5	1.4	8,135	
1989	1,304.5	15.7	3,345.0	40.3	704.0	8.5	2,337.5	28.1	532.0	6.4	86.0	1.0	8,309	

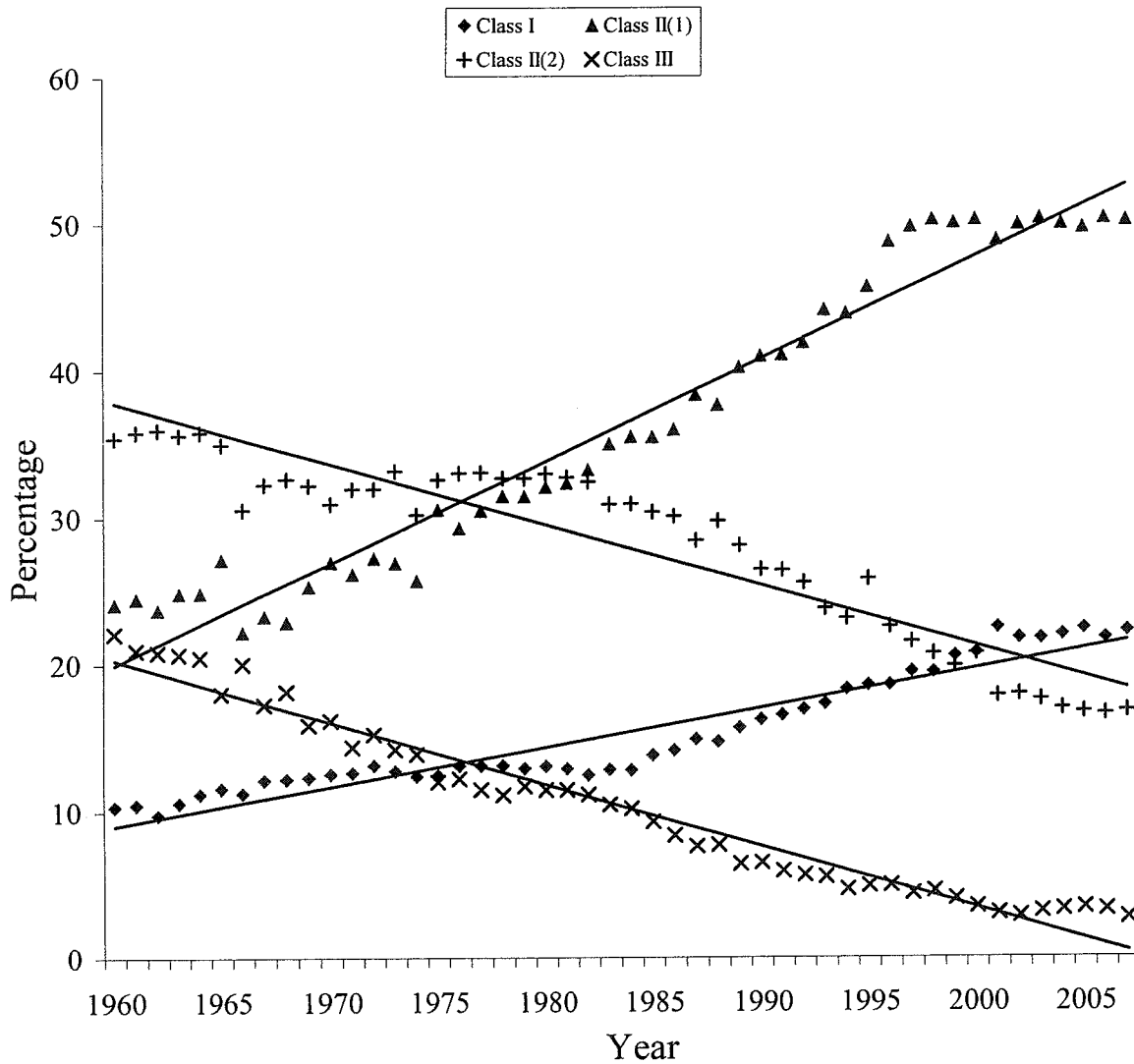
(Continued ...)

Notes: Candidates who were taking examinations as candidates 'not for honours' and candidates receiving allowances from the Applications Committee of the Council of the Senate were excluded from the 1972 statistics (and thereafter) although they had been included in previous years. Candidates for the LL.B Examination were included in 1972 for the first time but the LLM Examination was excluded from 1999. Candidates for the B.Ed. Degree were excluded from the statistics for the years 1972-79 inclusive, but, with the introduction of the Education Tripos, are included from 1980.

	Class I		Class II Division (1)		Class II Undivided		Class II Division (2)		Class III		Other Results		Total Candidates	
	No.	%	No.	%	No.	%	No.	%	No.	%	No.	%	No.	%
1990	1,366.0	16.2	3,450.5	41.0	715.0	8.5	2,227.0	26.5	545.5	6.5	104.0	1.2	8,408	
1991	1,400.5	16.5	3,481.0	41.1	743.0	8.8	2,237.5	26.4	502.0	5.9	104.0	1.2	8,468	
1992	1,460.0	16.9	3,616.5	41.9	729.0	8.5	2,206.5	25.6	486.0	5.6	129.0	1.5	8,627	
1993	1,497.5	17.3	3,822.5	44.2	705.0	8.1	2,061.0	23.8	478.0	5.5	92.0	1.1	8,656	
1994	1,594.5	18.3	3,825.5	43.9	774.0	8.9	2,015.0	23.1	407.0	4.7	98.0	1.1	8,714	
1995	1,667.0	18.6	4,103.5	45.7	359.0	4.0	2,318.0	25.8	440.0	4.9	90.5	1.0	8,978	
1996	1,684.0	18.6	4,420.0	48.8	356.0	3.9	2,043.5	22.6	448.0	4.9	108.5	1.2	9,060	
1997	1,771.0	19.5	4,529.5	49.8	328.0	3.6	1,958.0	21.5	398.5	4.4	107.0	1.2	9,092	
1998	1,798.5	19.4	4,650.5	50.3	366.0	4.0	1,917.0	20.7	420.5	4.5	96.5	1.0	9,249	
1999	1,901.0	20.5	4,632.0	50.1	410.0	4.4	1,838.5	19.9	371.5	4.0	98.0	1.1	9,251	
2000	1,946.0	20.8	4,711.5	50.3	378.0	4.0	1,944.0	20.7	325.5	3.5	65.0	0.7	9,370	
2001	2,106.5	22.5	4,582.0	48.9	629.0	6.7	1,671.5	17.8	283.0	3.0	97.0	1.0	9,369	
2002	2,108.0	21.8	4,841.0	50.0	650.0	6.7	1,740.0	18.0	274.0	2.8	76.0	0.8	9,689	
2003	2,176.0	21.7	5,046.0	50.4	639.0	6.4	1,762.5	17.6	316.5	3.2	76.0	0.8	10,016	
2004	2,215.5	22.0	5,039.0	50.0	685.0	6.8	1,711.0	17.0	329.5	3.3	94.0	0.9	10,074	
2005	2,261.0	22.4	5,019.5	49.7	655.0	6.5	1,688.0	16.7	344.5	3.4	124.0	1.2	10,092	
2006	2,179.0	21.8	5,046.0	50.4	682.0	6.8	1,664.0	16.6	326.0	3.3	121.0	1.2	10,018	
2007	2,213.0	22.2	4,998.0	50.2	698.0	7.0	1,671.0	16.8	270.0	2.7	100.0	1.0	9,950	

Notes: Candidates who were taking examinations as candidates 'not for honours' and candidates receiving allowances from the Applications Committee of the Council of the Senate were excluded from the 1972 statistics (and thereafter) although they had been included in previous years. Candidates for the LL.B Examination were included in 1972 for the first time but the LLM Examination was excluded from 1999. Candidates for the B.Ed. Degree were excluded from the statistics for the years 1972-79 inclusive, but, with the introduction of the Education Tripos, are included from 1980.

Examination Results 1960-2007
The graph shows the best fit line for each classification



N.B. The above graph does not include Others and Class II (Undivided)

Tripos Examination Results, 2007

	Class I		Class II Division (1)		Class II Undivided		Class II Division (2)		Class III		Other Results		Total Candidates		
	No.	%	No.	%	No.	%	No.	%	No.	%	No.	%	No.	%	
Anglo-Saxon, Norse and Celtic Tripos Part I	3	12.0	16	64.0	0	0.0	6	24.0	0	0.0	0	0.0	0	0.0	25
Anglo-Saxon, Norse and Celtic Tripos Part II	9	33.3	15	55.6	0	0.0	1	3.7	1	3.7	1	3.7	1	3.7	27
Archaeological and Anthropological Tripos Part I	7	12.5	46	82.1	0	0.0	3	5.4	0	0.0	0	0.0	0	0.0	56
Archaeological and Anthropological Tripos, Part IIA:	4	18.2	15	68.2	0	0.0	3	13.6	0	0.0	0	0.0	0	0.0	22
Archaeology	4	19.0	8	38.1	0	0.0	7	33.3	1	4.8	1	4.8	1	4.8	21
Archaeological and Anthropological Tripos Part IIA: Biological Anthropology	7	17.1	28	68.3	0	0.0	5	12.2	0	0.0	1	2.4	1	2.4	41
Archaeological and Anthropological Tripos Part IIA: Social Anthropology	11	45.8	12	50.0	0	0.0	0	0.0	0	0.0	1	4.2	1	4.2	24
Archaeological and Anthropological Tripos Part IIB:	1	4.3	18	78.3	0	0.0	4	17.4	0	0.0	0	0.0	0	0.0	23
Archaeology	6	20.0	19	63.3	0	0.0	5	16.7	0	0.0	0	0.0	0	0.0	30
Archaeological and Anthropological Tripos, Part IIB: Biological Anthropology	5	12.8	28	71.8	0	0.0	6	15.4	0	0.0	0	0.0	0	0.0	39
Architecture Tripos Part IA	5	12.5	21	52.5	0	0.0	12	30.0	2	5.0	0	0.0	0	0.0	40
Architecture Tripos Part IB	5	13.2	22	57.9	0	0.0	7	18.4	2	5.3	2	5.3	2	5.3	38
Architecture Tripos Part II	15	28.8	16	30.8	0	0.0	16	30.8	4	7.7	1	1.9	1	1.9	52
Chemical Engineering Tripos Part I	10	24.4	21	51.2	0	0.0	7	17.1	3	7.3	0	0.0	0	0.0	41
Chemical Engineering Tripos Part IIA	8	22.9	23	65.7	0	0.0	4	11.4	0	0.0	0	0.0	0	0.0	35
Chemical Engineering Tripos Part IIB	11	13.1	0	0.0	71	84.5	0	0.0	2	2.4	0	0.0	0	0.0	84
Classical Tripos Part IA	12	16.4	42	57.5	0	0.0	16	21.9	2	2.7	1	1.4	1	1.4	73
Classical Tripos Part IB	19	23.8	55	68.8	0	0.0	6	7.5	0	0.0	0	0.0	0	0.0	80
Classical Tripos Part II	17	21.8	26	33.3	0	0.0	28	35.9	7	9.0	0	0.0	0	0.0	78
Computer Science Tripos Part IA															

	Class I		Class II Division (1)		Class II Undivided		Class II Division (2)		Class III		Other Results		Total Candidates	
	No.	%	No.	%	No.	%	No.	%	No.	%	No.	%	No.	%
Computer Science Tripos Part IB	18	26.5	25	36.8	0	0.0	19	27.9	6	8.8	0	0.0	68	
Computer Science Tripos Part II	19	26.4	28	38.9	0	0.0	21	29.2	3	4.2	1	1.4	72	
Computer Science Tripos Part II (General)	5	55.6	4	44.4	0	0.0	0	0.0	0	0.0	0	0.0	9	
Economics Tripos Part I	29	20.0	75	51.7	0	0.0	36	24.8	4	2.8	1	0.7	145	
Economics Tripos Part IIA	23	13.7	59	35.1	0	0.0	69	41.1	14	8.3	3	1.8	168	
Economics Tripos Part IIB	28	17.6	78	49.1	0	0.0	49	30.8	2	1.3	2	1.3	159	
Education Studies Tripos Part I	11	12.0	68	73.9	0	0.0	9	9.8	1	1.1	3	3.3	92	
Education Studies Tripos Part II	14	14.1	75	75.8	0	0.0	10	10.1	0	0.0	0	0.0	99	
Engineering Tripos Part IA	75	26.4	106	37.3	0	0.0	79	27.8	14	4.9	10	3.5	284	
Engineering Tripos Part IB	72	27.8	106	40.9	0	0.0	67	25.9	14	5.4	0	0.0	259	
Engineering Tripos Part IIA	58	27.9	83	39.9	0	0.0	53	25.5	12	5.8	2	1.0	208	
Engineering Tripos Part IIB	48	22.3	105	48.8	0	0.0	56	26.0	0	0.0	6	2.8	215	
English Tripos Part I	34	16.9	126	62.7	0	0.0	38	18.9	2	1.0	1	0.5	201	
English Tripos Part II	46	21.9	140	66.7	0	0.0	21	10.0	3	1.4	0	0.0	210	
Geographical Tripos Part IA	19	18.8	67	66.3	0	0.0	14	13.9	0	0.0	1	1.0	101	
Geographical Tripos Part IB	17	15.9	77	72.0	0	0.0	11	10.3	0	0.0	2	1.9	107	
Geographical Tripos Part II	23	22.1	64	61.5	0	0.0	16	15.4	1	1.0	0	0.0	104	
Historical Tripos Part I	23	10.8	175	82.5	0	0.0	11	5.2	0	0.0	3	1.4	212	
Historical Tripos Part II	42	21.4	146	74.5	0	0.0	8	4.1	0	0.0	0	0.0	196	
History of Art Tripos Part I	1	3.3	26	86.7	0	0.0	3	10.0	0	0.0	0	0.0	30	
History of Art Tripos Part IIA	2	7.7	19	73.1	0	0.0	5	19.2	0	0.0	0	0.0	26	

	Class I		Class II Division (1)		Class II Undivided		Class II Division (2)		Class III		Other Results		Total Candidates		
	No.	%	No.	%	No.	%	No.	%	No.	%	No.	%	No.	%	
History of Art Tripos, Part IIB	6	24.0	17	68.0	0	0.0	2	8.0	0	0.0	0	0.0	0	0.0	25
Land Economy Tripos Part IA	7	15.9	23	52.3	0	0.0	11	25.0	2	4.5	1	2.3			44
Land Economy Tripos Part IB	5	9.8	37	72.5	0	0.0	7	13.7	2	3.9	0	0.0			51
Land Economy Tripos Part II	8	23.5	21	61.8	0	0.0	4	11.8	0	0.0	1	2.9			34
Law Tripos Part IA	16	8.0	129	64.2	0	0.0	52	25.9	2	1.0	2	1.0			201
Law Tripos Part IB	24	10.4	141	61.3	0	0.0	57	24.8	4	1.7	4	1.7			230
Law Tripos Part II	30	12.9	164	70.4	0	0.0	33	14.2	2	0.9	4	1.7			233
Linguistics Tripos	6	50.0	6	50.0	0	0.0	0	0.0	0	0.0	0	0.0			12
Management Studies Tripos	19	27.1	48	68.6	0	0.0	3	4.3	0	0.0	0	0.0			70
Manufacturing Engineering Tripos Part I	9	21.4	19	45.2	0	0.0	11	26.2	3	7.1	0	0.0			42
Manufacturing Engineering Tripos Part II	10	25.6	18	46.2	0	0.0	11	28.2	0	0.0	0	0.0			39
Mathematical Tripos Part IA	72	29.5	99	40.6	0	0.0	55	22.5	16	6.6	2	0.8			244
Mathematical Tripos Part IB	67	31.9	86	41.0	0	0.0	45	21.4	10	4.8	2	1.0			210
Mathematical Tripos Part II	64	30.2	90	42.5	0	0.0	43	20.3	8	3.8	7	3.3			212
Mathematical Tripos Part III	110	61.8	65	36.5	0	0.0	0	0.0	0	0.0	3	1.7			178
Medical and Veterinary Sciences Tripos Part IA	80	23.1	0	0.0	245	70.8	0	0.0	19	5.5	2	0.6			346
Medical and Veterinary Sciences Tripos Part IB	69	20.8	156	47.1	0	0.0	97	29.3	7	2.1	2	0.6			331
Modern and Medieval Languages Tripos Part IA	28	15.1	138	74.2	0	0.0	18	9.7	1	0.5	1	0.5			186
Modern and Medieval Languages Tripos Part IB	29	16.6	134	76.6	0	0.0	10	5.7	0	0.0	2	1.1			175
Modern and Medieval Languages Tripos Part II	59	36.9	92	57.5	0	0.0	9	5.6	0	0.0	0	0.0			160
Music Tripos Part IA	3	4.4	40	58.8	0	0.0	23	33.8	1	1.5	1	1.5			68

	Class I		Class II Division (1)		Class II Undivided		Class II Division (2)		Class III		Other Results		Total Candidates	
	No.	%	No.	%	No.	%	No.	%	No.	%	No.	%	No.	%
Music Tripos Part IB	8	12.5	44	68.8	0	0.0	11	17.2	0	0.0	1	1.6	64	
Music Tripos Part II	13	22.0	36	61.0	0	0.0	10	16.9	0	0.0	0	0.0	59	
Natural Sciences Tripos Part IA	144	25.3	0	0.0	382	67.1	0	0.0	37	6.5	6	1.1	569	
Natural Sciences Tripos Part IB	137	24.6	201	36.0	0	0.0	194	34.8	23	4.1	3	0.5	558	
Natural Sciences Tripos Part II: Astrophysics	4	30.8	4	30.8	0	0.0	2	15.4	3	23.1	0	0.0	13	
Natural Sciences Tripos Part II: Biochemistry	10	26.3	27	71.1	0	0.0	1	2.6	0	0.0	0	0.0	38	
Natural Sciences Tripos, Part II: Biological and Biomedical Sciences	6	4.5	96	71.6	0	0.0	29	21.6	2	1.5	1	0.7	134	
Natural Sciences Tripos Part II: Chemistry	32	33.0	40	41.2	0	0.0	15	15.5	8	8.2	2	2.1	97	
Natural Sciences Tripos Part II: Experimental and Theoretical Physics	45	41.3	31	28.4	0	0.0	25	22.9	6	5.5	2	1.8	109	
Natural Sciences Tripos Part II: Genetics	9	42.9	11	52.4	0	0.0	1	4.8	0	0.0	0	0.0	21	
Natural Sciences Tripos Part II: Geological Sciences	6	15.8	24	63.2	0	0.0	7	18.4	1	2.6	0	0.0	38	
Natural Sciences Tripos Part II: History and Philosophy of Science	5	13.9	30	83.3	0	0.0	1	2.8	0	0.0	0	0.0	36	
Natural Sciences Tripos Part II: Materials Science and Metallurgy	7	53.8	2	15.4	0	0.0	3	23.1	1	7.7	0	0.0	13	
Natural Sciences Tripos Part II: Neuroscience	7	22.6	22	71.0	0	0.0	2	6.5	0	0.0	0	0.0	31	
Natural Sciences Tripos Part II: Pathology	12	20.3	42	71.2	0	0.0	5	8.5	0	0.0	0	0.0	59	
Natural Sciences Tripos Part II: Pharmacology	11	37.9	18	62.1	0	0.0	0	0.0	0	0.0	0	0.0	29	
Natural Sciences Tripos, Part II: Physical Sciences	2	40.0	2	40.0	0	0.0	1	20.0	0	0.0	0	0.0	5	
Natural Sciences Tripos, Part II: Physiology, Development and Neuroscience	16	22.2	47	65.3	0	0.0	8	11.1	0	0.0	1	1.4	72	
Natural Sciences Tripos Part II: Physiology and Psychology	3	50.0	2	33.3	0	0.0	1	16.7	0	0.0	0	0.0	6	
Natural Sciences Tripos Part II: Plant Sciences	4	21.1	12	63.2	0	0.0	3	15.8	0	0.0	0	0.0	19	
Natural Sciences Tripos Part II: Psychology	15	33.3	30	66.7	0	0.0	0	0.0	0	0.0	0	0.0	45	

	Class I		Class II Division (1)		Class II Undivided		Class II Division (2)		Class III		Other Results		Total Candidates	
	No.	%	No.	%	No.	%	No.	%	No.	%	No.	%	No.	%
Natural Sciences Tripos Part II: Zoology	19	24.7	56	72.7	0	0.0	2	2.6	0	0.0	0	0.0	77	0.0
Natural Sciences Tripos Part III: Astrophysics	2	33.3	3	50.0	0	0.0	1	16.7	0	0.0	0	0.0	6	0.0
Natural Sciences Tripos, Part III: Biochemistry	10	38.5	14	53.8	0	0.0	2	7.7	0	0.0	0	0.0	26	0.0
Natural Sciences Tripos, Part III: Chemistry	23	35.9	23	35.9	0	0.0	18	28.1	0	0.0	0	0.0	64	0.0
Natural Sciences Tripos Part III: Experimental and Theoretical Physics	39	41.9	32	34.4	0	0.0	18	19.4	3	3.2	1	1.1	93	1.1
Natural Sciences Tripos, Part III: Geological Sciences	11	40.7	14	51.9	0	0.0	2	7.4	0	0.0	0	0.0	27	0.0
Natural Sciences Tripos, Part III: Material Science and Metallurgy	6	54.5	4	36.4	0	0.0	1	9.1	0	0.0	0	0.0	11	0.0
Oriental Studies Tripos Part I	3	7.5	28	70.0	0	0.0	9	22.5	0	0.0	0	0.0	40	0.0
Oriental Studies Tripos Part II	7	20.0	24	68.6	0	0.0	4	11.4	0	0.0	0	0.0	35	0.0
Philosophy Tripos Part IA	12	24.5	27	55.1	0	0.0	9	18.4	0	0.0	1	2.0	49	2.0
Philosophy Tripos Part IB	11	20.8	37	69.8	0	0.0	5	9.4	0	0.0	0	0.0	53	0.0
Philosophy Tripos Part II	12	27.3	29	65.9	0	0.0	2	4.5	1	2.3	0	0.0	44	0.0
Social and Political Sciences Tripos Part I	13	12.4	80	76.2	0	0.0	11	10.5	1	1.0	0	0.0	105	0.0
Social and Political Sciences Tripos Part IIA	13	11.5	77	68.1	0	0.0	18	15.9	3	2.7	2	1.8	113	1.8
Social and Political Sciences Tripos Part IIB	23	18.4	82	65.6	0	0.0	17	13.6	2	1.6	1	0.8	125	0.8
Theological and Religious Studies Tripos Part I	3	5.8	40	76.9	0	0.0	5	9.6	2	3.8	2	3.8	52	3.8
Theological and Religious Studies Tripos Part IIA	7	10.1	57	82.6	0	0.0	5	7.2	0	0.0	0	0.0	69	0.0
Theological and Religious Studies Tripos Part IIB	16	26.2	44	72.1	0	0.0	1	1.6	0	0.0	0	0.0	61	0.0
Totals	2,213	22.2	4,998	50.2	698	7.0	1,671	16.8	270	2.7	100	1.0	9,950	1.0

Men's and Women's Tripos Examination Results, 2007

	Class I:				Class II (1):				Class II (2):				Class III:				Others:				Total:							
	Men		Women		Men		Women		Men		Women		Men		Women		Men		Women		Men		Women					
	No.	%	No.	%	No.	%	No.	%	No.	%	No.	%	No.	%	No.	%	No.	%	No.	%	No.	%	No.	%				
Anglo-Saxon, Norse and Celtic Tripos Part I	1	10.0	2	13.3	7	70.0	9	60.0	0	0.0	0	0.0	4	26.7	0	0.0	0	0.0	0	0.0	0	0.0	0	0.0	10	40.0	15	60.0
Anglo-Saxon, Norse and Celtic Tripos Part II	4	40.0	5	29.4	4	40.0	11	64.7	0	0.0	0	0.0	1	5.9	1	10.0	0	0.0	1	10.0	0	0.0	0	0.0	10	37.0	17	63.0
Archaeological and Anthropological Tripos Part I	3	20.0	4	9.8	10	66.7	36	87.8	0	0.0	0	0.0	2	13.3	1	2.4	0	0.0	0	0.0	0	0.0	0	0.0	15	26.8	41	73.2
Archaeological and Anthropological Tripos Part IIA:	1	14.3	3	20.0	5	71.4	10	66.7	0	0.0	0	0.0	2	13.3	0	0.0	0	0.0	0	0.0	0	0.0	0	0.0	7	31.8	15	68.2
Archaeological and Anthropological Tripos Part IIA:	1	14.3	3	21.4	2	28.6	6	42.9	0	0.0	0	0.0	3	21.4	0	0.0	0	0.0	0	0.0	0	0.0	1	7.1	7	33.3	14	66.7
Archaeological and Anthropological Tripos Part IIA: Social Anthropology	1	12.5	6	18.2	5	62.5	23	69.7	0	0.0	0	0.0	4	12.1	0	0.0	0	0.0	0	0.0	0	0.0	0	0.0	8	19.5	33	80.5
Archaeological and Anthropological Tripos Part IIB:	3	60.0	8	42.1	2	40.0	10	52.6	0	0.0	0	0.0	0	0.0	0	0.0	0	0.0	0	0.0	0	0.0	1	5.3	5	20.8	19	79.2
Archaeology	0	0.0	1	6.7	7	87.5	11	73.3	0	0.0	0	0.0	1	12.5	0	0.0	0	0.0	0	0.0	0	0.0	0	0.0	8	34.8	15	65.2
Archaeological and Anthropological Tripos, Part IIB:	5	41.7	1	5.6	3	25.0	16	88.9	0	0.0	0	0.0	4	33.3	1	5.6	0	0.0	0	0.0	0	0.0	0	0.0	12	40.0	18	60.0
Archaeological and Anthropological Tripos, Part IIB: Social Anthropology	4	22.2	1	4.8	10	55.6	18	85.7	0	0.0	0	0.0	4	22.2	2	9.5	0	0.0	0	0.0	0	0.0	0	0.0	18	46.2	21	53.8
Architecture Tripos Part IA	1	6.3	4	16.7	9	56.3	12	50.0	0	0.0	0	0.0	8	33.3	2	12.5	0	0.0	0	0.0	0	0.0	0	0.0	16	40.0	24	60.0
Architecture Tripos Part IB	1	6.3	4	18.2	8	50.0	14	63.6	0	0.0	0	0.0	3	18.8	4	18.2	0	0.0	0	0.0	2	12.5	0	0.0	16	42.1	22	57.9
Architecture Tripos Part II	12	32.4	3	20.0	9	24.3	7	46.7	0	0.0	0	0.0	13	35.1	3	20.0	3	8.1	0	0.0	0	0.0	1	6.7	37	71.2	15	28.8
Chemical Engineering Tripos Part I	5	20.8	5	29.4	13	54.2	8	47.1	0	0.0	0	0.0	3	12.5	4	23.5	0	0.0	0	0.0	0	0.0	0	0.0	24	58.5	17	41.5
Chemical Engineering Tripos Part IIA	5	22.7	3	23.1	15	68.2	8	61.5	0	0.0	0	0.0	2	9.1	2	15.4	0	0.0	0	0.0	0	0.0	0	0.0	22	62.9	13	37.1
Chemical Engineering Tripos Part IIB	2	7.4	9	15.8	0	0.0	0	0.0	23	85.2	48	84.2	0	0.0	0	0.0	0	0.0	2	7.4	0	0.0	0	0.0	27	32.1	57	67.9
Classical Tripos Part IA	7	21.2	5	12.5	16	48.5	26	65.0	0	0.0	0	0.0	9	27.3	7	17.5	1	3.0	1	3.0	0	0.0	1	2.5	33	45.2	40	54.8
Classical Tripos Part IB	7	21.9	12	25.0	20	62.5	35	72.9	0	0.0	0	0.0	5	15.6	1	2.1	0	0.0	0	0.0	0	0.0	0	0.0	32	40.0	48	60.0
Classical Tripos Part II	16	22.5	1	14.3	24	33.8	2	28.6	0	0.0	0	0.0	25	35.2	3	42.9	6	8.5	1	14.3	0	0.0	0	0.0	71	91.0	7	9.0
Computer Science Tripos Part IA	18	29.5	0	0.0	23	37.7	2	28.6	0	0.0	0	0.0	15	24.6	4	57.1	5	8.2	1	14.3	0	0.0	0	0.0	61	89.7	7	10.3
Computer Science Tripos Part IB	19	28.4	0	0.0	26	38.8	2	40.0	0	0.0	0	0.0	19	28.4	2	40.0	2	3.0	1	20.0	1	1.5	0	0.0	67	93.1	5	6.9
Computer Science Tripos Part II	5	62.5	0	0.0	3	37.5	1	100.0	0	0.0	0	0.0	0	0.0	0	0.0	0	0.0	0	0.0	0	0.0	0	0.0	8	88.9	1	11.1
Computer Science Tripos Part II (General)	20	20.8	9	18.4	49	51.0	26	53.1	0	0.0	0	0.0	23	24.0	13	26.5	3	3.1	1	2.0	1	1.0	0	0.0	96	66.2	49	33.8

	Class I:				Class II (1):				Class II:				Class II (2):				Class III:				Others:				Total:				
	Men		Women		Men		Women		Men		Women		Men		Women		Men		Women		Men		Women		Men		Women		
	No.	%	No.	%	No.	%	No.	%	No.	%	No.	%	No.	%	No.	%	No.	%	No.	%	No.	%	No.	%	No.	%	No.	%	
Economics Tripos Part IIA	15	15.2	8	11.6	39	39.4	20	29.0	0	0.0	0	0.0	37	37.4	32	46.4	6	6.1	8	11.6	2	2.0	1	1.4	99	58.9	69	41.1	
Economics Tripos Part IIB	18	17.1	10	18.5	56	53.3	22	40.7	0	0.0	0	0.0	27	25.7	22	40.7	2	1.9	0	0.0	2	1.9	0	0.0	105	66.0	54	34.0	
Education Studies Tripos Part I	3	21.4	8	10.3	8	57.1	60	76.9	0	0.0	0	0.0	3	21.4	6	7.7	0	0.0	1	1.3	0	0.0	3	3.8	14	15.2	78	84.8	
Education Studies Tripos Part II	0	0.0	14	16.5	10	71.4	65	76.5	0	0.0	0	0.0	4	28.6	6	7.1	0	0.0	0	0.0	0	0.0	0	0.0	14	14.1	85	85.9	
Engineering Tripos Part IA	63	31.0	12	14.8	75	36.9	31	38.3	0	0.0	0	0.0	53	26.1	26	32.1	5	2.5	9	11.1	7	3.4	3	3.7	203	71.5	81	28.5	
Engineering Tripos Part IB	65	33.3	7	10.9	73	37.4	33	51.6	0	0.0	0	0.0	47	24.1	20	31.3	10	5.1	4	6.3	0	0.0	0	0.0	195	75.3	64	24.7	
Engineering Tripos Part IIA	45	29.6	13	23.2	60	39.5	23	41.1	0	0.0	0	0.0	38	25.0	15	26.8	8	5.3	4	7.1	1	0.7	1	1.8	152	73.1	56	26.9	
Engineering Tripos Part IIB	45	25.4	3	7.9	79	44.6	26	68.4	0	0.0	0	0.0	48	27.1	8	21.1	0	0.0	0	0.0	0	0.0	5	2.8	177	82.3	38	17.7	
English Tripos Part I	20	26.0	14	11.3	48	62.3	78	62.9	0	0.0	0	0.0	9	11.7	29	23.4	0	0.0	0	0.0	2	1.6	0	0.0	77	38.3	124	61.7	
English Tripos Part II	20	30.8	26	17.9	42	64.6	98	67.6	0	0.0	0	0.0	3	4.6	18	12.4	0	0.0	0	0.0	3	2.1	0	0.0	65	31.0	145	69.0	
Geographical Tripos Part IA	9	20.5	10	17.5	31	70.5	36	63.2	0	0.0	0	0.0	4	9.1	10	17.5	0	0.0	0	0.0	0	0.0	0	0.0	44	43.6	57	56.4	
Geographical Tripos Part IB	9	20.5	8	12.7	31	70.5	46	73.0	0	0.0	0	0.0	4	9.1	7	11.1	0	0.0	0	0.0	0	0.0	0	0.0	44	41.1	63	58.9	
Geographical Tripos Part II	9	25.0	14	20.6	26	72.2	38	55.9	0	0.0	0	0.0	1	2.8	15	22.1	0	0.0	1	1.5	0	0.0	0	0.0	36	34.6	68	65.4	
Historical Tripos Part I	16	15.1	7	6.6	86	81.1	89	84.0	0	0.0	0	0.0	3	2.8	8	7.5	0	0.0	0	0.0	1	0.9	2	1.9	106	50.0	106	50.0	
Historical Tripos Part II	21	21.9	21	21.0	70	72.9	76	76.0	0	0.0	0	0.0	5	5.2	3	3.0	0	0.0	0	0.0	0	0.0	0	0.0	96	49.0	100	51.0	
History of Art Tripos Part I	1	11.1	0	0.0	6	66.7	20	95.2	0	0.0	0	0.0	2	22.2	1	4.8	0	0.0	0	0.0	0	0.0	0	0.0	9	30.0	21	70.0	
History of Art Tripos Part IIA	0	0.0	2	11.8	5	55.6	14	82.4	0	0.0	0	0.0	4	44.4	1	5.9	0	0.0	0	0.0	0	0.0	0	0.0	9	34.6	17	65.4	
History of Art Tripos Part IIB	2	20.0	4	26.7	7	70.0	10	66.7	0	0.0	0	0.0	1	10.0	1	6.7	0	0.0	0	0.0	0	0.0	0	0.0	10	40.0	15	60.0	
Land Economy Tripos Part IA	1	4.3	6	28.6	11	47.8	12	57.1	0	0.0	0	0.0	9	39.1	2	9.5	2	8.7	0	0.0	0	0.0	0	0.0	4.8	23	52.3	21	47.7
Land Economy Tripos Part IB	4	16.0	1	3.8	16	64.0	21	80.8	0	0.0	0	0.0	3	12.0	4	15.4	2	8.0	0	0.0	0	0.0	0	0.0	25	49.0	26	51.0	
Land Economy Tripos Part II	3	15.0	5	35.7	14	70.0	7	50.0	0	0.0	0	0.0	2	10.0	2	14.3	0	0.0	0	0.0	0	0.0	1	5.0	20	58.8	14	41.2	
Law Tripos Part IA	6	7.7	10	8.1	56	71.8	73	59.3	0	0.0	0	0.0	14	17.9	38	30.9	1	1.3	1	0.8	1	1.3	1	0.8	78	38.8	123	61.2	
Law Tripos Part IB	15	14.7	9	7.0	58	56.9	83	64.8	0	0.0	0	0.0	24	23.5	33	25.8	2	2.0	2	1.6	3	2.9	1	0.8	102	44.3	128	55.7	
Law Tripos Part II	15	14.9	15	11.4	72	71.3	92	69.7	0	0.0	0	0.0	12	11.9	21	15.9	1	1.0	1	0.8	1	1.0	3	2.3	101	43.3	132	56.7	

	Class I:				Class II (1):				Class II:				Class II (2):				Class III:				Others:				Total:							
	Men		Women		Men		Women		Men		Women		Men		Women		Men		Women		Men		Women		Men		Women		Men		Women	
	No.	%	No.	%	No.	%	No.	%	No.	%	No.	%	No.	%	No.	%	No.	%	No.	%	No.	%	No.	%	No.	%	No.	%	No.	%		
Linguistics Tripos	3	37.5	3	75.0	5	62.5	1	25.0	0	0.0	0	0.0	0	0.0	0	0.0	0	0.0	0	0.0	0	0.0	0	0.0	0	0.0	0	0.0	8	66.7	4	33.3
Management Studies Tripos	14	29.2	5	22.7	32	66.7	16	72.7	0	0.0	0	0.0	2	4.2	1	4.5	0	0.0	0	0.0	0	0.0	0	0.0	0	0.0	0	0.0	48	68.6	22	31.4
Manufacturing Engineering Tripos Part I	4	16.7	5	27.8	11	45.8	8	44.4	0	0.0	0	0.0	6	25.0	5	27.8	3	12.5	0	0.0	0	0.0	0	0.0	0	0.0	0	0.0	24	57.1	18	42.9
Manufacturing Engineering Tripos Part II	9	30.0	1	11.1	11	36.7	7	77.8	0	0.0	0	0.0	10	33.3	1	11.1	0	0.0	0	0.0	0	0.0	0	0.0	0	0.0	0	0.0	30	76.9	9	23.1
Mathematical Tripos Part IA	69	35.0	3	6.4	78	39.6	21	44.7	0	0.0	0	0.0	38	19.3	17	36.2	10	5.1	6	12.8	2	1.0	0	0.0	0	0.0	197	80.7	47	19.3		
Mathematical Tripos Part IB	60	37.0	7	14.6	65	40.1	21	43.8	0	0.0	0	0.0	32	19.8	13	27.1	5	3.1	5	10.4	0	0.0	2	4.2	0	0.0	162	77.1	48	22.9		
Mathematical Tripos Part II	55	34.4	9	17.3	71	44.4	19	36.5	0	0.0	0	0.0	29	18.1	14	26.9	3	1.9	5	9.6	2	1.3	5	9.6	0	0.0	160	75.5	52	24.5		
Mathematical Tripos Part III	94	62.7	16	57.1	53	35.3	12	42.9	0	0.0	0	0.0	0	0.0	0	0.0	94	67.6	151	72.9	0	0.0	4	2.9	15	7.2	1	0.7	139	40.2	207	59.8
Medical and Veterinary Sciences Tripos Part IA	40	28.8	40	19.3	76	47.8	80	46.5	0	0.0	0	0.0	44	27.7	53	30.8	2	1.3	5	2.9	2	1.3	2	1.3	1	0.6	159	48.0	172	52.0		
Medical and Veterinary Sciences Tripos Part IB	36	22.6	33	19.2	39	65.0	99	78.6	0	0.0	0	0.0	10	16.7	8	6.3	0	0.0	0	0.0	0	0.0	1	1.7	0	0.0	60	32.3	126	67.7		
Modern and Medieval Languages Tripos Part IA	10	16.7	18	14.3	36	70.6	98	79.0	0	0.0	0	0.0	4	7.8	6	4.8	0	0.0	0	0.0	0	0.0	1	2.0	1	0.8	51	29.1	124	70.9		
Modern and Medieval Languages Tripos Part IB	10	19.6	19	15.3	36	70.6	98	79.0	0	0.0	0	0.0	4	7.8	6	4.8	0	0.0	0	0.0	0	0.0	0	0.0	0	0.0	0	0.0	57	35.6	103	64.4
Modern and Medieval Languages Tripos Part II	28	49.1	31	30.1	23	40.4	69	67.0	0	0.0	0	0.0	6	10.5	3	2.9	0	0.0	0	0.0	0	0.0	0	0.0	0	0.0	0	0.0	42	61.8	26	38.2
Music Tripos Part IA	3	7.1	0	0.0	29	69.0	11	42.3	0	0.0	0	0.0	10	23.8	13	50.0	0	0.0	0	0.0	0	0.0	1	3.8	0	0.0	1	2.7	37	57.8	27	42.2
Music Tripos Part IB	5	13.5	3	11.1	26	70.3	18	66.7	0	0.0	0	0.0	5	13.5	6	22.2	0	0.0	0	0.0	0	0.0	0	0.0	0	0.0	0	0.0	32	54.2	27	45.8
Music Tripos Part II	10	31.3	3	11.1	18	56.3	18	66.7	0	0.0	0	0.0	4	12.5	6	22.2	0	0.0	0	0.0	0	0.0	0	0.0	0	0.0	0	0.0	32	54.2	27	45.8
Natural Sciences Tripos Part IA	96	30.4	48	19.0	0	0.0	0	0.0	196	62.0	186	73.5	0	0.0	0	0.0	0	0.0	0	0.0	20	6.3	17	6.7	4	1.3	2	0.8	316	55.5	253	44.5
Natural Sciences Tripos Part IB	80	27.3	57	21.5	106	36.2	95	35.8	0	0.0	0	0.0	93	31.7	101	38.1	12	4.1	11	4.2	2	0.7	1	0.4	2	0.7	1	0.4	293	52.5	265	47.5
Natural Sciences Tripos Part II: Astrophysics	4	40.0	0	0.0	2	20.0	2	66.7	0	0.0	0	0.0	2	20.0	0	0.0	0	0.0	0	0.0	2	20.0	1	33.3	0	0.0	0	0.0	10	76.9	3	23.1
Natural Sciences Tripos Part II: Biochemistry	6	28.6	4	23.5	15	71.4	12	70.6	0	0.0	0	0.0	0	0.0	1	5.9	0	0.0	0	0.0	0	0.0	0	0.0	0	0.0	0	0.0	21	55.3	17	44.7
Natural Sciences Tripos, Part II: Biological and Biomedical Sciences	2	4.4	4	4.5	31	68.9	65	73.0	0	0.0	0	0.0	12	26.7	17	19.1	0	0.0	2	2.2	0	0.0	1	1.1	0	0.0	1	1.1	45	33.6	89	66.4
Natural Sciences Tripos Part II: Chemistry	17	34.0	15	31.9	22	44.0	18	38.3	0	0.0	0	0.0	6	12.0	9	19.1	3	6.0	5	10.6	2	4.0	0	0.0	0	0.0	0	0.0	50	51.5	47	48.5
Natural Sciences Tripos Part II: Experimental and Theoretical Physics	34	40.0	11	45.8	24	28.2	7	29.2	0	0.0	0	0.0	22	25.9	3	12.5	4	4.7	2	8.3	1	1.2	1	4.2	1	1.2	85	78.0	24	22.0		
Natural Sciences Tripos Part II: Genetics	2	40.0	7	43.8	3	60.0	8	50.0	0	0.0	0	0.0	0	0.0	1	6.3	0	0.0	0	0.0	0	0.0	0	0.0	0	0.0	5	23.8	16	76.2		

	Class I:				Class II (1):				Class II:				Class II (2):				Class III:				Others:				Total:					
	Men		Women		Men		Women		Men		Women		Men		Women		Men		Women		Men		Women		Men		Women			
	No.	%	No.	%	No.	%	No.	%	No.	%	No.	%	No.	%	No.	%	No.	%	No.	%	No.	%	No.	%	No.	%	No.	%		
Natural Sciences Tripos Part II: Geological Sciences	6	30.0	0	0.0	12	60.0	12	66.7	0	0.0	0	0.0	1	5.0	6	33.3	1	5.0	0	0.0	0	0.0	0	0.0	0	0.0	20	52.6	18	47.4
Natural Sciences Tripos Part II: History and Philosophy of Science	0	0.0	5	21.7	13	100.0	17	73.9	0	0.0	0	0.0	0	0.0	1	4.3	0	0.0	0	0.0	0	0.0	0	0.0	0	0.0	13	36.1	23	63.9
Natural Sciences Tripos Part II: Materials Science and Metallurgy	3	42.9	4	66.7	2	28.6	0	0.0	0	0.0	0	0.0	1	14.3	2	33.3	1	14.3	0	0.0	0	0.0	0	0.0	0	0.0	7	53.8	6	46.2
Natural Sciences Tripos Part II: Neuroscience	5	29.4	2	14.3	10	58.8	12	85.7	0	0.0	0	0.0	2	11.8	0	0.0	0	0.0	0	0.0	0	0.0	0	0.0	0	0.0	17	54.8	14	45.2
Natural Sciences Tripos Part II: Pathology	4	16.0	8	23.5	18	72.0	24	70.6	0	0.0	0	0.0	3	12.0	2	5.9	0	0.0	0	0.0	0	0.0	0	0.0	0	0.0	25	42.4	34	57.6
Natural Sciences Tripos Part II: Pharmacology	3	23.1	8	50.0	10	76.9	8	50.0	0	0.0	0	0.0	0	0.0	0	0.0	0	0.0	0	0.0	0	0.0	0	0.0	0	0.0	13	44.8	16	55.2
Natural Sciences Tripos, Part II: Physical Sciences	0	0.0	2	50.0	1	100.0	1	25.0	0	0.0	0	0.0	0	0.0	1	25.0	0	0.0	0	0.0	0	0.0	0	0.0	0	0.0	1	20.0	4	80.0
Natural Sciences Tripos, Part II: Physiology, Development and Neuroscience	8	27.6	8	18.6	16	55.2	31	72.1	0	0.0	0	0.0	5	17.2	3	7.0	0	0.0	0	0.0	0	0.0	0	0.0	1	2.3	29	40.3	43	59.7
Natural Sciences Tripos Part II: Physiology and Psychology	2	66.7	1	33.3	0	0.0	2	66.7	0	0.0	0	0.0	1	33.3	0	0.0	0	0.0	0	0.0	0	0.0	0	0.0	0	0.0	3	50.0	3	50.0
Natural Sciences Tripos Part II: Plant Sciences	1	16.7	3	23.1	3	50.0	9	69.2	0	0.0	0	0.0	2	33.3	1	7.7	0	0.0	0	0.0	0	0.0	0	0.0	0	0.0	6	31.6	13	68.4
Natural Sciences Tripos Part II: Psychology	3	30.0	12	34.3	7	70.0	23	65.7	0	0.0	0	0.0	0	0.0	0	0.0	0	0.0	0	0.0	0	0.0	0	0.0	0	0.0	10	22.2	35	77.8
Natural Sciences Tripos Part II: Zoology	8	25.0	11	24.4	22	68.8	34	75.6	0	0.0	0	0.0	2	6.3	0	0.0	0	0.0	0	0.0	0	0.0	0	0.0	0	0.0	32	41.6	45	58.4
Natural Sciences Tripos Part III: Astrophysics	1	25.0	1	50.0	3	75.0	0	0.0	0	0.0	0	0.0	0	0.0	1	50.0	0	0.0	0	0.0	0	0.0	0	0.0	0	0.0	4	66.7	2	33.3
Natural Sciences Tripos, Part III: Biochemistry	6	35.3	4	44.4	10	58.8	4	44.4	0	0.0	0	0.0	1	5.9	1	11.1	0	0.0	0	0.0	0	0.0	0	0.0	0	0.0	17	65.4	9	34.6
Natural Sciences Tripos, Part III: Chemistry	14	35.0	9	37.5	12	30.0	11	45.8	0	0.0	0	0.0	14	35.0	4	16.7	0	0.0	0	0.0	0	0.0	0	0.0	0	0.0	40	62.5	24	37.5
Natural Sciences Tripos Part III: Experimental and Theoretical Physics	29	40.3	10	47.6	25	34.7	7	33.3	0	0.0	0	0.0	14	19.4	4	19.0	3	4.2	0	0.0	0	0.0	1	1.4	0	0.0	72	77.4	21	22.6
Natural Sciences Tripos, Part III: Geological Sciences	5	41.7	6	40.0	6	50.0	8	53.3	0	0.0	0	0.0	1	8.3	1	6.7	0	0.0	0	0.0	0	0.0	0	0.0	0	0.0	12	44.4	15	55.6
Natural Sciences Tripos, Part III: Material Science and Metallurgy	5	62.5	1	33.3	2	25.0	2	66.7	0	0.0	0	0.0	1	12.5	0	0.0	0	0.0	0	0.0	0	0.0	0	0.0	0	0.0	8	72.7	3	27.3
Oriental Studies Tripos Part I	3	15.0	0	0.0	12	60.0	16	80.0	0	0.0	0	0.0	5	25.0	4	20.0	0	0.0	0	0.0	0	0.0	0	0.0	0	0.0	20	50.0	20	50.0
Oriental Studies Tripos Part II	3	18.8	4	21.1	13	81.3	11	57.9	0	0.0	0	0.0	0	0.0	4	21.1	0	0.0	0	0.0	0	0.0	0	0.0	0	0.0	16	45.7	19	54.3
Philosophy Tripos Part IA	6	27.3	6	22.2	12	54.5	15	55.6	0	0.0	0	0.0	4	18.2	5	18.5	0	0.0	0	0.0	0	0.0	0	0.0	1	3.7	22	44.9	27	55.1
Philosophy Tripos Part IB	6	18.8	5	23.8	22	68.8	15	71.4	0	0.0	0	0.0	4	12.5	1	4.8	0	0.0	0	0.0	0	0.0	0	0.0	0	0.0	32	60.4	21	39.6
Philosophy Tripos Part II	6	28.6	6	26.1	15	71.4	14	60.9	0	0.0	0	0.0	0	0.0	2	8.7	0	0.0	0	0.0	0	0.0	0	0.0	0	0.0	21	47.7	23	52.3
Social and Political Sciences Tripos Part I	5	13.9	8	11.6	29	80.6	51	73.9	0	0.0	0	0.0	2	5.6	9	13.0	0	0.0	1	1.4	0	0.0	0	0.0	0	0.0	36	34.3	69	65.7

	Class I:		Class II (1):				Class II:				Class II (2):				Class III:				Others:				Total:							
	No.	%	Men No.	Men %	Women No.	Women %	Men No.	Men %	Women No.	Women %	Men No.	Men %	Women No.	Women %	Men No.	Men %	Women No.	Women %	Men No.	Men %	Women No.	Women %	Men No.	Men %	Women No.	Women %	Men No.	Men %	Women No.	Women %
Social and Political Sciences Tripos Part IIA	5	12.5	8	11.0	29	72.5	48	65.8	0	0.0	0	0.0	4	10.0	14	19.2	2	5.0	1	1.4	0	0.0	2	2.7	40	35.4	73	64.6		
Social and Political Sciences Tripos Part IIB	7	14.6	16	20.8	32	66.7	50	64.9	0	0.0	0	0.0	7	14.6	10	13.0	2	4.2	0	0.0	1	1.3	48	38.4	77	61.6				
Theological and Religious Studies Tripos Part I	3	15.8	0	0.0	13	68.4	27	81.8	0	0.0	0	0.0	3	15.8	2	6.1	0	0.0	2	6.1	0	0.0	2	6.1	19	36.5	33	63.5		
Theological and Religious Studies Tripos Part IIA	4	12.9	3	7.9	25	80.6	32	84.2	0	0.0	0	0.0	2	6.5	3	7.9	0	0.0	0	0.0	0	0.0	0	0.0	31	44.9	38	55.1		
Theological and Religious Studies Tripos Part IIB	12	38.7	4	13.3	18	58.1	26	86.7	0	0.0	0	0.0	1	3.2	0	0.0	0	0.0	0	0.0	0	0.0	0	0.0	31	50.8	30	49.2		
Totals	1,400	26.7	813	17.3	2,417	46.1	2,581	54.8	313	6.0	385	8.2	912	17.4	759	16.1	146	2.8	124	2.6	52	1.0	48	1.0	5,240	52.7	4,710	47.3		

Preliminary and Other Examination Results, 2007

	Class I		Class II Division (1)		Class II Undivided		Class II Division (2)		Class III		Other Results		Total Candidates	
	No.	%	No.	%	No.	%	No.	%	No.	%	No.	%	No.	%
LL.M. Examination	27	25.5	68	64.2	0	0.0	10	9.4	0	0.0	1	0.9		106
Preliminary Examination for Linguistics Tripos	0	0.0	3	75.0	0	0.0	1	25.0	0	0.0	0	0.0		4
Preliminary Examination for Part I of the Anglo-Saxon, Norse and Celtic Tripos	4	16.0	20	80.0	0	0.0	1	4.0	0	0.0	0	0.0		25
Preliminary Examination for Part I of the Oriental Studies Tripos	9	16.4	34	61.8	0	0.0	11	20.0	0	0.0	1	1.8		55
Preliminary Examination for Part II Natural Sciences Tripos: Psychology	0	0.0	1	100.0	0	0.0	0	0.0	0	0.0	0	0.0		1
Preliminary Examination for Part II of the English Tripos	0	0.0	0	0.0	0	0.0	1	100.0	0	0.0	0	0.0		1
Preliminary Examination for Part II of the Geographical Tripos	0	0.0	2	100.0	0	0.0	0	0.0	0	0.0	0	0.0		2
Preliminary Examination for Part II of the Historical Tripos	0	0.0	1	100.0	0	0.0	0	0.0	0	0.0	0	0.0		1
Second Examination for the Bachelor of Theology for Ministry Degree	1	7.7	0	0.0	11	84.6	0	0.0	0	0.0	1	7.7		13
Totals	40	19.2	129	62.0	0	0.0	24	11.5	0	0.0	2	1.0		208

This table excludes unclassified Preliminary Examinations in History, Education Studies, Classics, Oriental studies, and the First Examination in Theology for Ministry (see Table 9a).

Men's and Women's Preliminary and Other Examination Results, 2007

	Class I:		Class II (1):				Class II:				Class II (2):				Class III:				Others:				Total:							
	No.	%	Men		Women		No.	%	Men		Women		No.	%	Men		Women		No.	%	Men		Women		No.	%	Men		Women	
			No.	%	No.	%			No.	%	No.	%			No.	%	No.	%			No.	%	No.	%			No.	%	No.	%
U.L.M. Examination	19	32.2	8	17.0	32	54.2	36	76.6	0	0.0	0	0.0	7	11.9	3	6.4	0	0.0	0	0.0	1	1.7	0	0.0	59	55.7	47	44.3		
Preliminary Examination for Linguistics Tripos	0	0.0	0	0.0	1	50.0	2	100.0	0	0.0	0	0.0	1	50.0	0	0.0	0	0.0	0	0.0	0	0.0	0	0.0	2	50.0	2	50.0		
Preliminary Examination for Part I of the Anglo-Saxon, Norse and Celtic Tripos	1	8.3	3	23.1	11	91.7	9	69.2	0	0.0	0	0.0	0	0.0	1	7.7	0	0.0	0	0.0	0	0.0	0	0.0	12	48.0	13	52.0		
Preliminary Examination for Part I of the Oriental Studies Tripos	3	12.0	6	20.0	16	64.0	18	60.0	0	0.0	0	0.0	6	24.0	5	16.7	0	0.0	0	0.0	0	0.0	1	3.3	25	45.5	30	54.5		
Preliminary Examination for Part II Natural Sciences Tripos: Psychology	0	0.0	0	0.0	1	100.0	0	0.0	0	0.0	0	0.0	0	0.0	0	0.0	0	0.0	0	0.0	0	0.0	0	0.0	1	100.0	0	0.0		
Preliminary Examination for Part II of the English Tripos	0	0.0	0	0.0	0	0.0	0	0.0	0	0.0	0	0.0	1	100.0	0	0.0	0	0.0	0	0.0	0	0.0	0	0.0	1	100.0	0	0.0		
Preliminary Examination for Part II of the Geographical Tripos	0	0.0	0	0.0	2	100.0	0	0.0	0	0.0	0	0.0	0	0.0	0	0.0	0	0.0	0	0.0	0	0.0	0	0.0	2	100.0	0	0.0		
Preliminary Examination for Part II of the Historical Tripos	0	0.0	0	0.0	0	0.0	1	100.0	0	0.0	0	0.0	0	0.0	0	0.0	0	0.0	0	0.0	0	0.0	0	0.0	0	0.0	1	100.0		
Preliminary Examination for Part IA of the Classical Tripos	0	0.0	0	0.0	0	0.0	0	0.0	0	0.0	0	0.0	0	0.0	0	0.0	0	0.0	0	0.0	0	0.0	0	0.0	0	0.0	0	0.0		
Second Examination for the Bachelor of Theology for Ministry Degree	0	0.0	1	14.3	0	0.0	0	0.0	5	83.3	6	85.7	0	0.0	0	0.0	0	0.0	0	0.0	1	16.7	0	0.0	6	46.2	7	53.8		
Totals	23	21.3	18	18.0	63	56.3	66	66.0	5	4.6	6	6.0	15	13.9	9	9.0	0	0.0	0	0.0	2	1.9	1	1.0	108	51.9	100	48.1		

This table excludes unclassified Preliminary Examinations in History, Education Studies, Classics, Oriental studies, and the First Examination in Theology for Ministry (see Table 9a).

Results in All Examinations, 2007

	Class I		Class II Division (1)		Class II Undivided		Class II Division (2)		Class III		Other Results		Total Candidates		
	No.	%	No.	%	No.	%	No.	%	No.	%	No.	%	No.	%	
Anglo-Saxon, Norse and Celtic	16	20.8	51	66.2	0	0.0	8	10.4	1	1.3	1	1.3	1	1.3	77
Archaeology and Anthropology	40	18.4	146	67.3	0	0.0	27	12.4	1	0.5	3	1.4	3	1.4	217
Architecture	15	12.8	71	60.7	0	0.0	25	21.4	4	3.4	2	1.7	2	1.7	117
Chemical Engineering	33	25.8	60	46.9	0	0.0	27	21.1	7	5.5	1	0.8	1	0.8	128
Classics	42	17.7	97	40.9	71	30.0	22	9.3	4	1.7	1	0.4	1	0.4	237
Computer Science	59	26.0	83	36.6	0	0.0	68	30.0	16	7.0	1	0.4	1	0.4	227
Economics	80	16.9	212	44.9	0	0.0	154	32.6	20	4.2	6	1.3	6	1.3	472
Education Studies	25	13.1	143	74.9	0	0.0	19	9.9	1	0.5	3	1.6	3	1.6	191
Engineering	253	26.2	400	41.4	0	0.0	255	26.4	40	4.1	18	1.9	18	1.9	966
English	80	19.4	266	64.6	0	0.0	60	14.6	5	1.2	1	0.2	1	0.2	412
Geography	59	18.8	210	66.9	0	0.0	41	13.1	1	0.3	3	1.0	3	1.0	314
History	65	15.9	322	78.7	0	0.0	19	4.6	0	0.0	3	0.7	3	0.7	409
History of Art	9	11.1	62	76.5	0	0.0	10	12.3	0	0.0	0	0.0	0	0.0	81
Land Economy	20	15.5	81	62.8	0	0.0	22	17.1	4	3.1	2	1.6	2	1.6	129
Law	97	12.6	502	65.2	0	0.0	152	19.7	8	1.0	11	1.4	11	1.4	770
Linguistics	6	37.5	9	56.3	0	0.0	1	6.3	0	0.0	0	0.0	0	0.0	16
Management Studies	10	25.6	18	46.2	0	0.0	11	28.2	0	0.0	0	0.0	0	0.0	39
Manufacturing Engineering	78	20.9	175	46.9	0	0.0	108	29.0	10	2.7	2	0.5	2	0.5	373
Mathematics	203	30.5	275	41.3	0	0.0	143	21.5	34	5.1	11	1.7	11	1.7	666
Medical Sciences	190	36.3	65	12.4	245	46.8	0	0.0	19	3.6	5	1.0	5	1.0	524

	Class I		Class II Division (1)		Class II Undivided		Class II Division (2)		Class III		Other Results		Total Candidates	
	No.	%	No.	%	No.	%	No.	%	No.	%	No.	%	No.	%
Modern and Medieval Languages	76	17.6	320	74.2	0	0.0	31	7.2	1	0.2	3	0.7	431	
Music	70	24.0	176	60.3	0	0.0	43	14.7	1	0.3	2	0.7	292	
Natural Sciences	592	26.4	820	36.5	382	17.0	351	15.6	84	3.7	16	0.7	2,245	
Oriental Studies	18	17.0	66	62.3	0	0.0	21	19.8	0	0.0	1	0.9	106	
Philosophy	30	21.9	88	64.2	0	0.0	18	13.1	0	0.0	1	0.7	137	
Social and Political Studies	38	14.5	186	71.0	0	0.0	31	11.8	5	1.9	2	0.8	262	
Theological and Religious Studies	27	13.8	141	72.3	11	5.6	11	5.6	2	1.0	3	1.5	195	
Theology for Ministry	23	18.4	82	65.6	0	0.0	17	13.6	2	1.6	1	0.8	125	
Totals	2,254	22.2	5,127	50.5	709	7.0	1,695	16.7	270	2.7	103	1.0	10,158	

This table excludes unclassified Preliminary Examinations in History, Education Studies, Classics, Oriental studies, and the First Examination in Theology for Ministry (see Table 9a).

Men's and Women's Results in All Examinations, 2007

	Class I:				Class II (1):				Class II (2):				Class III:				Others:				Total:					
	Men		Women		Men		Women		Men		Women		Men		Women		Men		Women		Men		Women			
	No.	%	No.	%	No.	%	No.	%	No.	%	No.	%	No.	%	No.	%	No.	%	No.	%	No.	%				
Archaeology and Anthropology	14	22.6	26	16.8	34	54.8	112	72.3	0	0.0	0	0.0	13	21.0	14	9.0	1	0.6	1	1.6	2	1.3	62	28.6	155	71.4
Architecture	6	12.0	9	13.4	27	54.0	44	65.7	0	0.0	0	0.0	11	22.0	14	20.9	0	0.0	2	4.0	0	0.0	50	42.7	67	57.3
Anglo-Saxon, Norse and Celtic	6	18.8	10	22.2	22	68.8	29	64.4	0	0.0	0	0.0	2	6.3	6	13.3	0	0.0	1	3.1	0	0.0	32	41.6	45	58.4
Chemical Engineering	22	26.5	11	24.4	37	44.6	23	51.1	0	0.0	0	0.0	18	21.7	9	20.0	1	2.2	0	0.0	1	2.2	83	64.8	45	35.2
Classics	16	17.4	26	17.9	36	39.1	61	42.1	23	25.0	48	33.1	14	15.2	8	5.5	3	3.3	1	0.7	0	0.0	92	38.8	145	61.2
Computer Science	58	28.0	1	5.0	76	36.7	7	35.0	0	0.0	0	0.0	59	28.5	9	45.0	3	15.0	1	0.5	0	0.0	207	91.2	20	8.8
Economics	53	17.7	27	15.7	144	48.0	68	39.5	0	0.0	0	0.0	87	29.0	67	39.0	11	3.7	9	5.2	5	1.7	300	63.6	172	36.4
Education Studies	3	10.7	22	13.5	18	64.3	125	76.7	0	0.0	0	0.0	7	25.0	12	7.4	0	0.0	1	0.6	0	0.0	28	14.7	163	85.3
Engineering	218	30.0	35	14.6	287	39.5	113	47.3	0	0.0	0	0.0	186	25.6	69	28.9	23	3.2	17	7.1	13	1.8	727	75.3	239	24.7
English	40	28.0	40	14.9	90	62.9	176	65.4	0	0.0	0	0.0	13	9.1	47	17.5	0	0.0	5	1.9	0	0.0	143	34.7	269	65.3
Geography	27	21.4	32	17.0	90	71.4	120	63.8	0	0.0	0	0.0	9	7.1	32	17.0	0	0.0	1	0.5	0	0.0	126	40.1	188	59.9
History of Art	3	10.7	6	11.3	18	64.3	44	83.0	0	0.0	0	0.0	7	25.0	3	5.7	0	0.0	0	0.0	0	0.0	28	34.6	53	65.4
History	37	18.3	28	13.5	156	77.2	166	80.2	0	0.0	0	0.0	8	4.0	11	5.3	0	0.0	0	0.0	1	0.5	202	49.4	207	50.6
Land Economy	8	11.8	12	19.7	41	60.3	40	65.6	0	0.0	0	0.0	14	20.6	8	13.1	4	5.9	0	0.0	1	1.5	68	52.7	61	47.3
Linguistics	3	30.0	3	50.0	6	60.0	3	50.0	0	0.0	0	0.0	1	10.0	0	0.0	0	0.0	0	0.0	0	0.0	10	62.5	6	37.5
Law	55	16.2	42	9.8	218	64.1	284	66.0	0	0.0	0	0.0	57	16.8	95	22.1	4	1.2	4	1.8	6	1.8	340	44.2	430	55.8
Mathematics	184	35.5	19	12.9	214	41.2	61	41.5	0	0.0	0	0.0	99	19.1	44	29.9	18	3.5	16	10.9	4	0.8	519	77.9	147	22.1
Medical Sciences	134	46.4	56	23.8	53	18.3	12	5.1	94	32.5	151	64.3	0	0.0	0	0.0	4	1.4	15	6.4	4	1.4	289	55.2	235	44.8
Manufacturing Engineering	40	21.9	38	20.0	87	47.5	88	46.3	0	0.0	0	0.0	50	27.3	58	30.5	5	2.7	5	2.6	1	0.5	183	49.1	190	50.9
Management Studies	9	30.0	1	11.1	11	36.7	7	77.8	0	0.0	0	0.0	10	33.3	1	11.1	0	0.0	0	0.0	0	0.0	30	76.9	9	23.1
Modern and Medieval Languages	34	21.4	42	15.4	107	67.3	213	78.3	0	0.0	0	0.0	16	10.1	15	5.5	0	0.0	1	0.4	2	1.3	159	36.9	272	63.1
Music	36	26.5	34	21.8	78	57.4	98	62.8	0	0.0	0	0.0	21	15.4	22	14.1	0	0.0	1	0.7	1	0.6	136	46.6	156	53.4
Natural Sciences	349	29.6	243	22.8	392	33.2	428	40.2	196	16.6	186	17.4	186	15.8	165	15.5	46	3.9	38	3.6	10	0.8	1,179	52.5	1,066	47.5
Orbital Studies	11	20.8	7	13.2	30	56.6	36	67.9	0	0.0	0	0.0	12	22.6	9	17.0	0	0.0	0	0.0	0	0.0	1	1.9	53	50.0
Philosophy	15	21.4	15	22.4	47	67.1	41	61.2	0	0.0	0	0.0	8	11.4	10	14.9	0	0.0	0	0.0	0	0.0	1	1.5	70	51.1
Social and Political Studies	16	16.5	22	13.3	73	75.3	113	68.5	0	0.0	0	0.0	6	6.2	25	15.2	2	2.1	3	1.8	0	0.0	97	37.0	165	63.0
Theology for Ministry	7	14.6	16	20.8	32	66.7	50	64.9	0	0.0	0	0.0	7	14.6	10	13.0	2	4.2	0	0.0	0	0.0	48	38.4	77	61.6
Theological and Religious Studies	19	21.8	8	7.4	56	64.4	85	78.7	5	5.7	6	5.6	6	6.9	5	4.6	0	0.0	2	1.9	1	1.1	87	44.6	108	55.4
Totals	1,423	26.6	831	17.3	2,480	46.4	2,647	55.0	318	5.9	391	8.1	927	17.3	768	16.0	146	2.7	124	2.6	54	1.0	5,348	52.6	4,810	47.4

This table excludes unclassified Preliminary Examinations in History, Education Studies, Classics, Oriental studies, and the First Examination in Theology for Ministry (see Table 9a).

Undergraduate Examination Results by Ethnic Background, 2007 (All Candidates)

	Class I		Class II Division (1)		Class II Undivided		Class II Division (2)		Class III		Total Candidates	
	No.	%	No.	%	No.	%	No.	%	No.	%	No.	%
White	1,595	22.4	3,848	54.0	402	5.6	1,067	15.0	153	2.1	7,126	70.2
Black or Black British - Caribbean	0	0.0	5	35.7	1	7.1	7	50.0	1	7.1	14	0.1
Black or Black British - African	1	1.9	23	42.6	2	3.7	21	38.9	5	9.3	54	0.5
Other Black background	1	12.5	2	25.0	0	0.0	4	50.0	1	12.5	8	0.1
Asian or Asian British - Indian	59	20.1	128	43.7	15	5.1	81	27.6	6	2.0	293	2.9
Asian or Asian British - Pakistani	7	13.7	26	51.0	4	7.8	11	21.6	2	3.9	51	0.5
Asian or Asian British - Bangladeshi	1	4.8	10	47.6	1	4.8	8	38.1	1	4.8	21	0.2
Chinese	162	28.4	200	35.0	52	9.1	118	20.7	32	5.6	571	5.6
Other Asian background	47	27.2	61	35.3	11	6.4	48	27.7	4	2.3	173	1.7
Mixed White and Black Caribbean	4	13.8	18	62.1	1	3.4	6	20.7	0	0.0	29	0.3
Mixed White and Black African	3	20.0	8	53.3	1	6.7	3	20.0	0	0.0	15	0.1
Mixed White and Asian	37	22.0	83	49.4	12	7.1	31	18.5	1	0.6	168	1.7
Other Mixed background	21	19.6	56	52.3	7	6.5	19	17.8	2	1.9	107	1.1
Other ethnic background	9	14.5	26	41.9	12	19.4	12	19.4	2	3.2	62	0.6
Not known (UCAS Code)	20	22.7	41	46.6	8	9.1	14	15.9	3	3.4	88	0.9
Information refused	258	20.5	540	43.0	166	13.2	230	18.3	49	3.9	1,257	12.4
Information not yet sought	29	24.0	52	43.0	14	11.6	15	12.4	8	6.6	121	1.2
Totals	2,254	22.2	5,127	50.5	709	7.0	1,695	16.7	270	2.7	10,158	100.0

Undergraduate Examination Results by Ethnic Background, Michaelmas Term 2006 Entrants

	Class I		Class II Division (1)		Class II Undivided		Class II Division (2)		Class III		Other Results		Total Candidates	
	No.	%	No.	%	No.	%	No.	%	No.	%	No.	%	No.	%
White	390	23.0	673	39.7	381	22.5	180	10.6	57	3.4	16	0.9	1,697	56.0
Black or Black British - Caribbean	0	0.0	0	0.0	1	33.3	2	66.7	0	0.0	0	0.0	3	0.1
Black or Black British - African	0	0.0	6	54.5	2	18.2	3	27.3	0	0.0	0	0.0	11	0.4
Other Black background	0	0.0	0	0.0	0	0.0	2	66.7	1	33.3	0	0.0	3	0.1
Asian or Asian British - Indian	16	19.8	30	37.0	15	18.5	18	22.2	1	1.2	1	1.2	81	2.7
Asian or Asian British - Pakistani	3	16.7	7	38.9	3	16.7	3	16.7	1	5.6	1	5.6	18	0.6
Asian or Asian British - Bangladeshi	0	0.0	1	50.0	1	50.0	0	0.0	0	0.0	0	0.0	2	0.1
Chinese	70	32.6	52	24.2	52	24.2	29	13.5	10	4.7	2	0.9	215	7.1
Other Asian background	22	37.9	13	22.4	11	19.0	10	17.2	2	3.4	0	0.0	58	1.9
Mixed White and Black Caribbean	2	28.6	2	28.6	1	14.3	2	28.6	0	0.0	0	0.0	7	0.2
Mixed White and Black African	0	0.0	1	25.0	1	25.0	2	50.0	0	0.0	0	0.0	4	0.1
Mixed White and Asian	6	15.4	16	41.0	12	30.8	4	10.3	0	0.0	1	2.6	39	1.3
Other Mixed background	4	17.4	9	39.1	7	30.4	3	13.0	0	0.0	0	0.0	23	0.8
Other ethnic background	6	17.1	11	31.4	12	34.3	5	14.3	0	0.0	1	2.9	35	1.2
Not known (UCAS Code)	10	17.5	27	47.4	8	14.0	8	14.0	3	5.3	1	1.8	57	1.9
Information refused	129	18.6	263	37.9	166	23.9	100	14.4	26	3.7	10	1.4	694	22.9
Information not yet sought	24	27.9	36	41.9	10	11.6	10	11.6	3	3.5	3	3.5	86	2.8
Totals	682	22.5	1,147	37.8	683	22.5	381	12.6	104	3.4	36	1.2	3,033	100.0

Undergraduate Examination Results by Ethnic Background, Michaelmas Term 2005 Entrants

	Class I		Class II Division (1)		Class II Undivided		Class II Division (2)		Class III		Other Results		Total Candidates	
	No.	%	No.	%	No.	%	No.	%	No.	%	No.	%	No.	%
White	441	18.1	1,392	57.2	20	0.8	512	21.0	50	2.1	20	0.8	2,435	74.4
Black or Black British - Caribbean	0	0.0	2	33.3	0	0.0	3	50.0	1	16.7	0	0.0	6	0.2
Black or Black British - African	1	4.8	8	38.1	0	0.0	9	42.9	3	14.3	0	0.0	21	0.6
Other Black background	0	0.0	2	66.7	0	0.0	1	33.3	0	0.0	0	0.0	3	0.1
Asian or Asian British - Indian	15	16.3	39	42.4	0	0.0	33	35.9	4	4.3	1	1.1	92	2.8
Asian or Asian British - Pakistani	2	14.3	7	50.0	1	7.1	4	28.6	0	0.0	0	0.0	14	0.4
Asian or Asian British - Bangladeshi	1	20.0	2	40.0	0	0.0	1	20.0	1	20.0	0	0.0	5	0.2
Chinese	41	28.9	52	36.6	0	0.0	35	24.6	13	9.2	1	0.7	142	4.3
Other Asian background	11	21.6	21	41.2	0	0.0	16	31.4	2	3.9	1	2.0	51	1.6
Mixed White and Black Caribbean	1	11.1	6	66.7	0	0.0	2	22.2	0	0.0	0	0.0	9	0.3
Mixed White and Black African	1	25.0	3	75.0	0	0.0	0	0.0	0	0.0	0	0.0	4	0.1
Mixed White and Asian	13	25.0	22	42.3	0	0.0	15	28.8	0	0.0	2	3.8	52	1.6
Other Mixed background	4	10.8	25	67.6	0	0.0	7	18.9	0	0.0	1	2.7	37	1.1
Other ethnic background	1	7.1	7	50.0	0	0.0	4	28.6	2	14.3	0	0.0	14	0.4
Not known (UCAS Code)	4	33.3	6	50.0	0	0.0	2	16.7	0	0.0	0	0.0	12	0.4
Information refused	78	22.5	161	46.5	0	0.0	94	27.2	11	3.2	2	0.6	346	10.6
Information not yet sought	4	12.9	14	45.2	3	9.7	5	16.1	5	16.1	0	0.0	31	0.9
Totals	618	18.9	1,769	54.0	24	0.7	743	22.7	92	2.8	28	0.9	3,274	100.0

Undergraduate Examination Results by Ethnic Background, Michaelmas Term 2004 Entrants

	Class I		Class II Division (1)		Class II Undivided		Class II Division (2)		Class III		Other Results		Total Candidates	
	No.	%	No.	%	No.	%	No.	%	No.	%	No.	%	No.	%
White	544	24.1	1,386	61.4	1	0.0	269	11.9	41	1.8	15	0.7	2,256	77.2
Black or Black British - Caribbean	0	0.0	1	33.3	0	0.0	2	66.7	0	0.0	0	0.0	3	0.1
Black or Black British - African	0	0.0	8	47.1	0	0.0	7	41.2	1	5.9	1	5.9	17	0.6
Other Black background	1	50.0	0	0.0	0	0.0	1	50.0	0	0.0	0	0.0	2	0.1
Asian or Asian British - Indian	23	25.6	44	48.9	0	0.0	20	22.2	1	1.1	2	2.2	90	3.1
Asian or Asian British - Pakistani	2	11.8	12	70.6	0	0.0	2	11.8	1	5.9	0	0.0	17	0.6
Asian or Asian British - Bangladeshi	0	0.0	3	30.0	0	0.0	7	70.0	0	0.0	0	0.0	10	0.3
Chinese	38	22.6	80	47.6	0	0.0	41	24.4	6	3.6	3	1.8	168	5.8
Other Asian background	11	20.8	24	45.3	0	0.0	17	32.1	0	0.0	1	1.9	53	1.8
Mixed White and Black Caribbean	1	8.3	9	75.0	0	0.0	2	16.7	0	0.0	0	0.0	12	0.4
Mixed White and Black African	2	28.6	4	57.1	0	0.0	1	14.3	0	0.0	0	0.0	7	0.2
Mixed White and Asian	12	20.7	35	60.3	0	0.0	9	15.5	1	1.7	1	1.7	58	2.0
Other Mixed background	7	22.6	16	51.6	0	0.0	5	16.1	2	6.5	1	3.2	31	1.1
Other ethnic background	1	10.0	7	70.0	0	0.0	2	20.0	0	0.0	0	0.0	10	0.3
Not known (UCAS Code)	5	31.3	7	43.8	0	0.0	3	18.8	0	0.0	1	6.3	16	0.5
Information refused	40	23.8	90	53.6	0	0.0	28	16.7	10	6.0	0	0.0	168	5.8
Information not yet sought	0	0.0	2	66.7	1	33.3	0	0.0	0	0.0	0	0.0	3	0.1
Totals	687	23.5	1,728	59.2	2	0.1	416	14.2	63	2.2	25	0.9	2,921	100.0

Undergraduate Examination Results by Ethnic Background, Michaelmas Term 2003 Entrants

	Class I		Class II Division (1)		Class II Undivided		Class II Division (2)		Class III		Other Results		Total Candidates	
	No.	%	No.	%	No.	%	No.	%	No.	%	No.	%	No.	%
White	213	30.4	384	54.8	0	0.0	95	13.6	2	0.3	7	1.0	701	79.7
Black or Black British - Caribbean	0	0.0	1	100.0	0	0.0	0	0.0	0	0.0	0	0.0	1	0.1
Black or Black British - African	0	0.0	1	25.0	0	0.0	2	50.0	0	0.0	1	25.0	4	0.5
Other Black background	0	0.0	0	0.0	0	0.0	0	0.0	0	0.0	0	0.0	0	0.0
Asian or Asian British - Indian	5	16.7	15	50.0	0	0.0	10	33.3	0	0.0	0	0.0	30	3.4
Asian or Asian British - Pakistani	0	0.0	0	0.0	0	0.0	2	100.0	0	0.0	0	0.0	2	0.2
Asian or Asian British - Bangladeshi	0	0.0	3	100.0	0	0.0	0	0.0	0	0.0	0	0.0	3	0.3
Chinese	13	28.3	16	34.8	0	0.0	13	28.3	3	6.5	1	2.2	46	5.2
Other Asian background	3	42.9	2	28.6	0	0.0	2	28.6	0	0.0	0	0.0	7	0.8
Mixed White and Black Caribbean	0	0.0	1	100.0	0	0.0	0	0.0	0	0.0	0	0.0	1	0.1
Mixed White and Black African	0	0.0	0	0.0	0	0.0	0	0.0	0	0.0	0	0.0	0	0.0
Mixed White and Asian	6	31.6	10	52.6	0	0.0	3	15.8	0	0.0	0	0.0	19	2.2
Other Mixed background	6	37.5	6	37.5	0	0.0	4	25.0	0	0.0	0	0.0	16	1.8
Other ethnic background	1	33.3	1	33.3	0	0.0	1	33.3	0	0.0	0	0.0	3	0.3
Not known (UCAS Code)	0	0.0	0	0.0	0	0.0	0	0.0	0	0.0	0	0.0	0	0.0
Information refused	10	21.7	26	56.5	0	0.0	6	13.0	2	4.3	2	4.3	46	5.2
Information not yet sought	1	100.0	0	0.0	0	0.0	0	0.0	0	0.0	0	0.0	1	0.1
Totals	258	29.3	466	53.0	0	0.0	138	15.7	7	0.8	11	1.3	880	100.0

Undergraduate Examination Results by Disability, 2007 (All Candidates)

	Class I		Class II Division (1)		Class II Undivided		Class II Division (2)		Class III		Other Results		Total Candidates	
	No.	%	No.	%	No.	%	No.	%	No.	%	No.	%	No.	%
No disability	1,629	22.5	3,574	49.3	548	7.6	1,223	16.9	197	2.7	73	1.0	7,244	71.3
Dyslexia	25	15.2	84	50.9	8	4.8	39	23.6	7	4.2	2	1.2	165	1.6
Blind/are partially sighted	1	10.0	5	50.0	0	0.0	4	40.0	0	0.0	0	0.0	10	0.1
Deaf/have a hearing impairment	5	20.0	17	68.0	0	0.0	3	12.0	0	0.0	0	0.0	25	0.2
Wheelchair user/have mobility difficulties	2	25.0	4	50.0	0	0.0	1	12.5	1	12.5	0	0.0	8	0.1
Personal care support	0	0.0	0	0.0	0	0.0	0	0.0	0	0.0	0	0.0	0	0.0
Mental health difficulties	1	12.5	6	75.0	0	0.0	1	12.5	0	0.0	0	0.0	8	0.1
An unseen disability, e.g. diabetes, epilepsy, asthma	9	15.8	30	52.6	3	5.3	14	24.6	0	0.0	1	1.8	57	0.6
Multiple disabilities	3	23.1	6	46.2	0	0.0	2	15.4	1	7.7	1	7.7	13	0.1
A disability not listed above	12	20.3	33	55.9	3	5.1	11	18.6	0	0.0	0	0.0	59	0.6
Autistic Spectrum Disorder	3	23.1	6	46.2	0	0.0	0	0.0	4	30.8	0	0.0	13	0.1
Information not sought	0	0.0	1	100.0	0	0.0	0	0.0	0	0.0	0	0.0	1	0.0
Not known	564	22.1	1,361	53.3	147	5.8	397	15.5	60	2.3	26	1.0	2,555	25.2
Totals	2,254	22.2	5,127	50.5	709	7.0	1,695	16.7	270	2.7	103	1.0	10,158	100.0

The category 'No known disability' has been replaced by 'No disability' from this year. Data improvements have led to a significant shift from this category to 'Not known' (when compared with previous years).

Undergraduate Examination Results by Disability, Michaelmas Term 2006 Entrants

	Class I		Class II Division (1)		Class II Undivided		Class II Division (2)		Class III		Other Results		Total Candidates	
	No.	%	No.	%	No.	%	No.	%	No.	%	No.	%	No.	%
No disability	507	22.2	851	37.3	534	23.4	288	12.6	73	3.2	30	1.3	2,283	75.3
Dyslexia	9	21.4	13	31.0	7	16.7	10	23.8	3	7.1	0	0.0	42	1.4
Blind/are partially sighted	0	0.0	1	50.0	0	0.0	1	50.0	0	0.0	0	0.0	2	0.1
Deaf/have a hearing impairment	1	20.0	2	40.0	0	0.0	2	40.0	0	0.0	0	0.0	5	0.2
Wheelchair user/have mobility difficulties	1	50.0	0	0.0	0	0.0	0	0.0	1	50.0	0	0.0	2	0.1
Personal care support	0	0.0	0	0.0	0	0.0	0	0.0	0	0.0	0	0.0	0	0.0
Mental health difficulties	0	0.0	0	0.0	0	0.0	0	0.0	0	0.0	0	0.0	1	0.0
An unseen disability, e.g. diabetes, epilepsy, asthma	1	5.9	10	58.8	3	17.6	2	11.8	0	0.0	1	5.9	17	0.6
Multiple disabilities	0	0.0	0	0.0	0	0.0	0	0.0	1	100.0	0	0.0	1	0.0
A disability not listed above	3	18.8	7	43.8	3	18.8	3	18.8	0	0.0	0	0.0	16	0.5
Autistic Spectrum Disorder	0	0.0	1	50.0	0	0.0	0	0.0	1	50.0	0	0.0	2	0.1
Information not sought	0	0.0	1	100.0	0	0.0	0	0.0	0	0.0	0	0.0	1	0.0
Not known	160	24.2	261	39.5	136	20.6	74	11.2	25	3.8	5	0.8	661	21.8
Totals	682	22.5	1,147	37.8	683	22.5	381	12.6	104	3.4	36	1.2	3,033	100.0

The category 'No known disability' has been replaced by 'No disability' from this year. Data improvements have led to a significant shift from this category to 'Not known' (when compared with previous years).

Undergraduate Examination Results by Disability, Michaelmas Term 2005 Entrants

	Class I		Class II Division (1)		Class II Undivided		Class II Division (2)		Class III		Other Results		Total Candidates	
	No.	%	No.	%	No.	%	No.	%	No.	%	No.	%	No.	%
No disability	463	19.3	1,278	53.4	14	0.6	547	22.8	71	3.0	21	0.9	2,394	73.1
Dyslexia	8	12.7	33	52.4	1	1.6	18	28.6	3	4.8	0	0.0	63	1.9
Blind/are partially sighted	0	0.0	1	50.0	0	0.0	1	50.0	0	0.0	0	0.0	2	0.1
Deaf/have a hearing impairment	4	40.0	5	50.0	0	0.0	1	10.0	0	0.0	0	0.0	10	0.3
Wheelchair user/have mobility difficulties	0	0.0	3	100.0	0	0.0	0	0.0	0	0.0	0	0.0	3	0.1
Personal care support	0	0.0	0	0.0	0	0.0	0	0.0	0	0.0	0	0.0	0	0.0
Mental health difficulties	0	0.0	3	100.0	0	0.0	0	0.0	0	0.0	0	0.0	3	0.1
An unseen disability, e.g. diabetes, epilepsy, asthma	5	26.3	8	42.1	0	0.0	6	31.6	0	0.0	0	0.0	19	0.6
Multiple disabilities	2	66.7	0	0.0	0	0.0	1	33.3	0	0.0	0	0.0	3	0.1
A disability not listed above	2	12.5	9	56.3	0	0.0	5	31.3	0	0.0	0	0.0	16	0.5
Autistic Spectrum Disorder	2	33.3	3	50.0	0	0.0	0	0.0	1	16.7	0	0.0	6	0.2
Information not sought	0	0.0	0	0.0	0	0.0	0	0.0	0	0.0	0	0.0	0	0.0
Not known	132	17.5	426	56.4	9	1.2	164	21.7	17	2.3	7	0.9	755	23.1
Totals	618	18.9	1,769	54.0	24	0.7	743	22.7	92	2.8	28	0.9	3,274	100.0

The category 'No known disability' has been replaced by 'No disability' from this year. Data improvements have led to a significant shift from this category to 'Not known' (when compared with previous years).

Undergraduate Examination Results by Disability, Michaelmas Term 2004 Entrants

	Class I		Class II Division (1)		Class II Undivided		Class II Division (2)		Class III		Other Results		Total Candidates	
	No.	%	No.	%	No.	%	No.	%	No.	%	No.	%	No.	%
No disability	529	24.9	1,232	58.0	0	0.0	301	14.2	45	2.1	16	0.8	2,123	72.7
Dyslexia	6	13.6	28	63.6	0	0.0	8	18.2	1	2.3	1	2.3	44	1.5
Blind/are partially sighted	1	16.7	3	50.0	0	0.0	2	33.3	0	0.0	0	0.0	6	0.2
Deaf/have a hearing impairment	0	0.0	9	100.0	0	0.0	0	0.0	0	0.0	0	0.0	9	0.3
Wheelchair user/have mobility difficulties	1	33.3	1	33.3	0	0.0	1	33.3	0	0.0	0	0.0	3	0.1
Personal care support	0	0.0	0	0.0	0	0.0	0	0.0	0	0.0	0	0.0	0	0.0
Mental health difficulties	0	0.0	1	100.0	0	0.0	0	0.0	0	0.0	0	0.0	1	0.0
An unseen disability, e.g. diabetes, epilepsy, asthma	2	12.5	9	56.3	0	0.0	5	31.3	0	0.0	0	0.0	16	0.5
Multiple disabilities	1	20.0	4	80.0	0	0.0	0	0.0	0	0.0	0	0.0	5	0.2
A disability not listed above	6	27.3	13	59.1	0	0.0	3	13.6	0	0.0	0	0.0	22	0.8
Autistic Spectrum Disorder	0	0.0	2	50.0	0	0.0	0	0.0	2	50.0	0	0.0	4	0.1
Information not sought	0	0.0	0	0.0	0	0.0	0	0.0	0	0.0	0	0.0	0	0.0
Not known	141	20.5	426	61.9	2	0.3	96	14.0	15	2.2	8	1.2	688	23.6
Totals	687	23.5	1,728	59.2	2	0.1	416	14.2	63	2.2	25	0.9	2,921	100.0

The category 'No known disability' has been replaced by 'No disability' from this year. Data improvements have led to a significant shift from this category to 'Not known' (when compared with previous years).

Undergraduate Examination Results by Disability, Michaelmas Term 2003 Entrants

	Class I		Class II Division (1)		Class II Undivided		Class II Division (2)		Class III		Other Results		Total Candidates	
	No.	%	No.	%	No.	%	No.	%	No.	%	No.	%	No.	%
No disability	126	30.2	204	48.9	0	0.0	77	18.5	5	1.2	5	1.2	417	47.4
Dyslexia	2	13.3	10	66.7	0	0.0	2	13.3	0	0.0	1	6.7	15	1.7
Blind/are partially sighted	0	0.0	0	0.0	0	0.0	0	0.0	0	0.0	0	0.0	0	0.0
Deaf/have a hearing impairment	0	0.0	1	100.0	0	0.0	0	0.0	0	0.0	0	0.0	1	0.1
Wheelchair user/have mobility difficulties	0	0.0	0	0.0	0	0.0	0	0.0	0	0.0	0	0.0	0	0.0
Personal care support	0	0.0	0	0.0	0	0.0	0	0.0	0	0.0	0	0.0	0	0.0
Mental health difficulties	1	33.3	2	66.7	0	0.0	0	0.0	0	0.0	0	0.0	3	0.3
An unseen disability, e.g. diabetes, epilepsy, asthma	1	20.0	3	60.0	0	0.0	1	20.0	0	0.0	0	0.0	5	0.6
Multiple disabilities	0	0.0	2	100.0	0	0.0	0	0.0	0	0.0	0	0.0	2	0.2
A disability not listed above	1	20.0	4	80.0	0	0.0	0	0.0	0	0.0	0	0.0	5	0.6
Autistic Spectrum Disorder	0	0.0	0	0.0	0	0.0	0	0.0	0	0.0	0	0.0	0	0.0
Information not sought	0	0.0	0	0.0	0	0.0	0	0.0	0	0.0	0	0.0	0	0.0
Not known	127	29.4	240	55.6	0	0.0	58	13.4	2	0.5	5	1.2	432	49.1
Totals	258	29.3	466	53.0	0	0.0	138	15.7	7	0.8	11	1.3	880	100.0

The category 'No known disability' has been replaced by 'No disability' from this year. Data improvements have led to a significant shift from this category to 'Not known' (when compared with previous years).

Final M.B. and Final Vet. M.B. Examination Results 2006-07

	Pass with Distinction				Pass				Others				Total			
	Men		Women		Men		Women		Men		Women		Men		Women	
	No.	%	No.	%	No.	%	No.	%	No.	%	No.	%	No.	%	No.	%
Final M.B. Examination Part I, Pathology	9	10.0	6	6.4	69	76.7	85	90.4	12	13.3	3	3.2	90	48.9	94	51.1
Final M.B. Examination Part II	5	6.8	21	24.1	69	93.2	66	75.9	0	0.0	0	0.0	74	46.0	87	54.0
Final M.B. Examination Part II: Failures	0	0.0	0	0.0	0	0.0	0	0.0	6	100.0	1	100.0	6	85.7	1	14.3
Final M.B. Part II, Re-sit Examination, Long Vacation	0	0.0	0	0.0	1	100.0	0	0.0	0	0.0	0	0.0	1	100.0	0	0.0
Final Veterinary Examination, Part I	3	15.8	2	5.0	16	84.2	38	95.0	0	0.0	0	0.0	19	32.2	40	67.8
Final Veterinary Examination, Part II	5	26.3	4	9.1	11	57.9	32	72.7	3	15.8	8	18.2	19	30.2	44	69.8
Final Veterinary Examination, Part III	0	0.0	0	0.0	21	100.0	53	100.0	0	0.0	0	0.0	21	28.4	53	71.6
Totals	22	9.6	33	10.3	187	81.3	274	85.9	21	9.1	12	3.8	230	41.9	319	58.1

Students deemed to have obtained honours whilst studying abroad, 2007

Chemical Engineering Tripos, Part I, M.I.T. students (for students away from Cambridge at M.I.T.)	3
Economics Tripos, Part IIA, M.I.T. students (for students away from Cambridge at M.I.T.)	2
Engineering Tripos, Part IIA, M.I.T. students (for students away from Cambridge at M.I.T.)	16
Law Tripos Part II	2
Law Tripos, Part II, student at Paris II (Fourth year)	15
Mathematical Tripos, Part IB, M.I.T. students (for students away from Cambridge at M.I.T.)	2
Manufacturing Engineering Tripos, Part I, M.I.T. students (for students away from Cambridge at M.I.T.)	2
Natural Sciences Tripos, Part II, M.I.T. students (for students away from Cambridge at M.I.T.)	11
Totals	53

This table gives the results for students who have spent the year studying at the Massachusetts Institute of Technology or studying in Paris as part of the Double Maitrise.

Tripos Examination Results by College, 2007

	Class I		Class II Division (1)		Class II Undivided		Class II Division (2)		Class III		Other Results		Total Candidates	
	No.	%	No.	%	No.	%	No.	%	No.	%	No.	%	No.	%
Christ's	111	29.6	164	43.7	30	8.0	54	14.4	10	2.7	6	1.6	375	
Churchill	114	26.9	186	43.9	28	6.6	80	18.9	14	3.3	2	0.5	424	
Clare	77	19.8	197	50.6	42	10.8	60	15.4	9	2.3	4	1.0	389	
Clare Hall	1	33.3	2	66.7	0	0.0	0	0.0	0	0.0	0	0.0	3	
Corpus Christi	59	26.5	108	48.4	15	6.7	34	15.2	7	3.1	0	0.0	223	
Darwin	7	58.3	4	33.3	0	0.0	0	0.0	0	0.0	1	8.3	12	
Downing	94	24.8	190	50.1	31	8.2	53	14.0	8	2.1	3	0.8	379	
Emmanuel	129	30.4	191	45.0	32	7.5	58	13.7	7	1.7	7	1.7	424	
Fitzwilliam	101	23.5	210	48.8	30	7.0	73	17.0	14	3.3	2	0.5	430	
Girton	75	16.4	251	55.0	31	6.8	79	17.3	13	2.9	7	1.5	456	
Gorville and Caius	113	24.6	220	47.8	35	7.6	78	17.0	12	2.6	2	0.4	460	
Homerton	46	10.2	269	59.4	20	4.4	98	21.6	13	2.9	7	1.5	453	
Hughes Hall	7	13.7	17	33.3	0	0.0	20	39.2	4	7.8	3	5.9	51	
Jesus	110	24.9	229	51.8	26	5.9	64	14.5	11	2.5	2	0.5	442	
King's	73	21.9	167	50.0	24	7.2	51	15.3	16	4.8	3	0.9	334	
Lucy Cavendish	8	14.8	24	44.4	3	5.6	14	25.9	3	5.6	2	3.7	54	
Magdalene	61	19.4	170	54.0	22	7.0	49	15.6	5	1.6	8	2.5	315	
New Hall	46	14.3	167	52.0	32	10.0	65	20.2	8	2.5	3	0.9	321	
Newnham	51	14.8	187	54.2	33	9.6	57	16.5	13	3.8	4	1.2	345	
Pembroke	105	28.0	174	46.4	27	7.2	60	16.0	9	2.4	0	0.0	375	
Peterhouse	30	13.7	119	54.3	14	6.4	48	21.9	7	3.2	1	0.5	219	
Queens	116	25.0	221	47.6	29	6.3	79	17.0	15	3.2	4	0.9	464	
Robinson	67	18.7	185	51.5	19	5.3	74	20.6	13	3.6	1	0.3	359	
Selwyn	76	23.3	188	57.7	23	7.1	31	9.5	6	1.8	2	0.6	326	
Sidney Sussex	70	22.4	164	52.4	24	7.7	47	15.0	7	2.2	1	0.3	313	
St Catharine's	97	24.7	203	51.8	28	7.1	53	15.5	5	1.3	6	1.5	392	
St Edmund's	10	9.8	39	38.2	6	5.9	34	33.3	9	8.8	4	3.9	102	
St John's	104	20.2	264	51.3	40	7.8	96	18.6	11	2.1	0	0.0	515	
Trinity	178	28.9	291	47.3	25	4.1	99	16.1	12	2.0	10	1.6	615	
Trinity Hall	70	21.7	168	52.2	27	8.4	51	15.8	3	0.9	3	0.9	322	
Wolfson	7	12.1	29	50.0	2	3.4	12	20.7	6	10.3	2	3.4	58	
Totals	2,213	22.2	4,998	50.2	698	7.0	1,671	16.8	270	2.7	100	1.0	9,950	

Men's and Women's Tripos Examination Results by College, 2007

	Class I:				Class II (1):				Class II (2):				Class III:				Others:				Total:					
	Men		Women		Men		Women		Men		Women		Men		Women		Men		Women		Men		Women			
	No.	%	No.	%	No.	%	No.	%	No.	%	No.	%	No.	%	No.	%	No.	%	No.	%	No.	%	No.	%		
Christ's	83	35.8	28	19.6	96	41.4	68	47.6	15	6.5	15	10.5	22	15.4	5	2.2	5	3.5	1	0.4	5	3.5	232	61.9	143	38.1
Churchill	86	28.3	28	23.3	130	42.8	56	46.7	18	5.9	10	8.3	20	16.7	8	2.6	6	5.0	2	0.7	0	0.0	304	71.7	120	28.3
Clare	50	24.3	27	14.8	93	45.1	104	56.8	23	11.2	19	10.4	28	15.3	6	2.9	3	1.6	2	1.0	2	1.1	206	53.0	183	47.0
Clare Hall	0	0.0	1	100.0	2	100.0	0	0.0	0	0.0	0	0.0	0	0.0	0	0.0	0	0.0	0	0.0	0	0.0	2	66.7	1	33.3
Corpus Christi	40	32.5	19	19.0	52	42.3	56	56.0	7	5.7	8	8.0	13	13.0	3	2.4	4	4.0	0	0.0	0	0.0	123	55.2	100	44.8
Darwin	7	63.6	0	0.0	3	27.3	1	100.0	0	0.0	0	0.0	0	0.0	0	0.0	0	0.0	1	9.1	0	0.0	11	91.7	1	8.3
Downing	58	28.4	36	20.6	96	47.1	94	53.7	16	7.8	15	8.6	22	12.6	2	1.0	6	3.4	1	0.5	2	1.1	204	53.8	175	46.2
Emmanuel	73	34.8	56	26.2	84	40.0	107	50.0	11	5.2	21	9.8	28	13.1	7	3.3	0	0.0	5	2.4	2	0.9	210	49.5	214	50.5
Fitzwilliam	70	26.4	31	18.8	116	43.8	94	57.0	20	7.5	10	6.1	23	13.9	8	3.0	6	3.6	1	0.4	1	0.6	265	61.6	165	38.4
Girton	49	20.6	26	11.9	122	51.3	129	59.2	18	7.6	13	6.0	39	17.9	8	3.4	5	2.3	1	0.4	6	2.8	238	52.2	218	47.8
Gonville and Caius	71	26.0	42	22.5	129	47.3	91	48.7	19	7.0	16	8.6	34	18.2	9	3.3	3	1.6	1	0.4	1	0.5	273	59.3	187	40.7
Homerton	21	10.8	25	9.7	95	48.7	174	67.4	14	7.2	6	2.3	44	17.1	8	4.1	5	1.9	3	1.5	4	1.6	195	43.0	258	57.0
Hughes Hall	4	12.9	3	15.0	12	38.7	5	25.0	0	0.0	0	0.0	10	32.3	2	6.5	2	10.0	3	9.7	0	0.0	31	60.8	20	39.2
Jesus	68	26.6	42	22.6	127	49.6	102	54.8	13	5.1	13	7.0	24	12.9	7	2.7	4	2.2	1	0.4	1	0.5	256	57.9	186	42.1
King's	50	26.2	23	16.1	91	47.6	76	53.1	8	4.2	16	11.2	21	14.7	9	4.7	7	4.9	3	1.6	0	0.0	191	57.2	143	42.8
Lucy Cavendish	0	0.0	8	14.8	0	0.0	24	44.4	0	0.0	3	5.6	14	25.9	0	0.0	3	5.6	0	0.0	0	0.0	0	0.0	54	100.0
Magdalene	38	24.4	23	14.5	71	45.5	99	62.3	10	6.4	12	7.5	19	11.9	3	1.9	2	1.3	4	2.6	4	2.5	156	49.5	159	50.5
New Hall	0	0.0	46	14.3	0	0.0	167	52.0	0	0.0	32	10.0	65	20.2	0	0.0	8	2.5	0	0.0	3	0.9	0	0.0	321	100.0
Newnham	0	0.0	51	14.8	0	0.0	187	54.2	0	0.0	33	9.6	57	16.5	0	0.0	13	3.8	0	0.0	4	1.2	0	0.0	345	100.0
Pembroke	61	33.3	44	22.9	69	37.7	105	54.7	9	4.9	18	9.4	20	10.4	4	2.2	5	2.6	0	0.0	0	0.0	183	48.8	192	51.2
Peterhouse	24	18.8	6	6.6	64	50.0	55	60.4	5	3.9	9	9.9	29	22.7	5	3.9	2	2.2	1	0.8	0	0.0	128	58.4	91	41.6
Queens'	80	28.6	36	19.6	128	45.7	93	50.5	13	4.6	16	8.7	30	16.3	8	2.9	7	3.8	2	0.7	2	1.1	280	60.3	184	39.7
Robinson	52	22.3	15	11.9	122	52.4	63	50.0	10	4.3	9	7.1	42	25.4	6	2.6	7	5.6	1	0.4	0	0.0	233	64.9	126	35.1
Selwyn	50	27.2	26	18.3	95	51.6	93	65.5	12	6.5	11	7.7	22	12.0	4	2.2	2	1.4	1	0.5	1	0.7	184	56.4	142	43.6
Sidney Sussex	40	24.5	30	20.0	84	51.5	80	53.3	7	4.3	17	11.3	21	14.0	5	3.1	2	1.3	1	0.6	0	0.0	163	52.1	150	47.9
St Catharine's	55	27.4	42	22.0	94	46.8	109	57.1	13	6.5	15	7.9	21	11.0	3	1.5	2	1.0	4	2.0	2	1.0	201	51.3	191	48.7
St Edmund's	9	13.8	1	2.7	27	41.5	12	32.4	4	6.2	2	5.4	18	43.2	3	4.6	6	16.2	4	6.2	4	0.0	65	63.7	37	36.3
St John's	77	24.4	27	13.6	146	46.2	118	59.3	20	6.3	20	10.1	64	20.3	9	2.8	2	1.0	0	0.0	0	0.0	316	61.4	199	38.6
Trinity	137	34.7	41	18.6	174	44.1	117	53.2	18	4.6	7	3.2	46	20.9	8	2.0	4	1.8	5	1.3	5	2.3	395	64.2	220	35.8
Trinity Hall	44	27.0	26	16.4	80	49.1	88	55.3	8	4.9	19	11.9	27	16.6	1	0.6	2	1.3	3	1.8	0	0.0	163	50.6	159	49.4
Wolfson	3	9.4	4	15.4	15	46.9	14	53.8	2	6.3	0	0.0	6	18.8	5	15.6	1	3.8	1	3.1	1	3.8	32	55.2	26	44.8
Totals	1,400	26.7	813	17.3	2,417	46.1	2,581	54.8	313	6.0	385	8.2	912	17.4	146	2.8	124	2.6	52	1.0	48	1.0	5,240	52.7	4,710	47.3

Preliminary and Other Examination Results by College, 2007

	Class I		Class II Division (1)		Class II Undivided		Class II Division (2)		Class III		Other Results		Total Candidates
	No.	%	No.	%	No.	%	No.	%	No.	%	No.	%	
Christ's	0	0.0	2	100.0	0	0.0	0	0.0	0	0.0	0	0.0	2
Churchill	4	57.1	3	42.9	0	0.0	0	0.0	0	0.0	0	0.0	7
Clare	2	33.3	4	66.7	0	0.0	0	0.0	0	0.0	0	0.0	6
Clare Hall	1	50.0	1	50.0	0	0.0	0	0.0	0	0.0	0	0.0	2
Corpus Christi	1	20.0	2	40.0	0	0.0	2	40.0	0	0.0	0	0.0	5
Darwin	1	11.1	7	77.8	0	0.0	1	11.1	0	0.0	0	0.0	9
Downing	0	0.0	3	60.0	0	0.0	2	40.0	0	0.0	0	0.0	5
Emmanuel	0	0.0	5	100.0	0	0.0	0	0.0	0	0.0	0	0.0	5
Fitzwilliam	2	20.0	6	60.0	2	20.0	0	0.0	0	0.0	0	0.0	10
Girton	2	28.6	4	57.1	0	0.0	1	14.3	0	0.0	0	0.0	7
Gonville and Caius	2	40.0	3	60.0	0	0.0	0	0.0	0	0.0	0	0.0	5
Homerton	0	0.0	7	87.5	0	0.0	1	12.5	0	0.0	0	0.0	8
Hughes Hall	1	8.3	9	75.0	0	0.0	1	8.3	0	0.0	1	8.3	12
Jesus	1	16.7	5	83.3	0	0.0	0	0.0	0	0.0	0	0.0	6
King's	3	25.0	6	50.0	0	0.0	3	25.0	0	0.0	0	0.0	12
Lucy Cavendish	0	0.0	1	50.0	1	50.0	0	0.0	0	0.0	0	0.0	2
Magdalene	1	33.3	0	0.0	0	0.0	2	66.7	0	0.0	0	0.0	3
New Hall	0	0.0	1	100.0	0	0.0	0	0.0	0	0.0	0	0.0	1
Newnham	2	33.3	4	66.7	0	0.0	0	0.0	0	0.0	0	0.0	6
Pembroke	2	33.3	4	66.7	0	0.0	0	0.0	0	0.0	0	0.0	6
Peterhouse	1	50.0	1	50.0	0	0.0	0	0.0	0	0.0	0	0.0	2
Queens'	2	14.3	11	78.6	0	0.0	1	7.1	0	0.0	0	0.0	14
Robinson	1	20.0	2	40.0	2	40.0	0	0.0	0	0.0	0	0.0	5
Selwyn	1	16.7	2	33.3	1	16.7	1	16.7	0	0.0	1	16.7	6
Sidney Sussex	0	0.0	1	25.0	2	50.0	1	25.0	0	0.0	0	0.0	4
St Catharine's	1	16.7	5	83.3	0	0.0	0	0.0	0	0.0	0	0.0	6
St Edmund's	1	12.5	4	50.0	1	12.5	2	25.0	0	0.0	0	0.0	8
St John's	2	33.3	3	50.0	0	0.0	1	16.7	0	0.0	0	0.0	6
Trinity	1	6.7	11	73.3	0	0.0	2	13.3	0	0.0	1	6.7	15
Trinity Hall	2	20.0	7	70.0	0	0.0	1	10.0	0	0.0	0	0.0	10
Wolfson	4	30.8	5	38.5	2	15.4	2	15.4	0	0.0	0	0.0	13
Totals	41	19.7	129	62.0	11	5.3	24	11.5	0	0.0	3	1.4	208

This table excludes unclassified Preliminary Examinations in History, Education Studies, Classics, Oriental studies, and the First Examination in Theology for Ministry (see Table 9a).

Men's and Women's Preliminary and Other Examination Results by College, 2007

	Class I:				Class II (1):				Class II:				Class II (2):				Class III:				Others:				Total:					
	Men		Women		Men		Women		Men		Women		Men		Women		Men		Women		Men		Women		Men		Women			
	No.	%	No.	%	No.	%	No.	%	No.	%	No.	%	No.	%	No.	%	No.	%	No.	%	No.	%	No.	%	No.	%	No.	%		
Christ's	0	0.0	0	0.0	0	0.0	0	0.0	0	0.0	0	0.0	0	0.0	0	0.0	0	0.0	0	0.0	0	0.0	0	0.0	0	0.0	0	0.0	0	0.0
Churchill	2	50.0	2	66.7	2	50.0	1	33.3	0	0.0	0	0.0	0	0.0	0	0.0	0	0.0	0	0.0	0	0.0	0	0.0	4	57.1	3	42.9	4	66.7
Clare	1	50.0	1	25.0	1	50.0	3	75.0	0	0.0	0	0.0	0	0.0	0	0.0	0	0.0	0	0.0	0	0.0	0	0.0	2	33.3	4	66.7	2	100.0
Clare Hall	0	0.0	1	50.0	0	0.0	1	50.0	0	0.0	0	0.0	0	0.0	0	0.0	0	0.0	0	0.0	0	0.0	0	0.0	0	0.0	0	0.0	3	60.0
Corpus Christi	1	33.3	0	0.0	1	33.3	1	50.0	0	0.0	0	0.0	1	33.3	1	50.0	0	0.0	0	0.0	0	0.0	0	0.0	3	60.0	2	40.0	5	55.6
Darwin	1	25.0	0	0.0	3	75.0	4	80.0	0	0.0	0	0.0	0	0.0	0	0.0	1	20.0	0	0.0	0	0.0	0	0.0	4	44.4	5	55.6	2	40.0
Downing	0	0.0	0	0.0	1	33.3	2	100.0	0	0.0	0	0.0	2	66.7	0	0.0	0	0.0	0	0.0	0	0.0	0	0.0	3	60.0	2	40.0	3	60.0
Emmanuel	0	0.0	0	0.0	3	100.0	2	100.0	0	0.0	0	0.0	0	0.0	0	0.0	0	0.0	0	0.0	0	0.0	0	0.0	3	60.0	2	40.0	5	50.0
Fitzwilliam	2	40.0	0	0.0	3	60.0	3	60.0	0	0.0	2	40.0	0	0.0	0	0.0	0	0.0	0	0.0	0	0.0	0	0.0	5	50.0	5	50.0	2	28.6
Girton	1	20.0	1	50.0	3	60.0	1	50.0	0	0.0	0	0.0	0	0.0	0	0.0	0	0.0	0	0.0	0	0.0	0	0.0	1	20.0	4	80.0	7	87.5
Gonville and Caius	0	0.0	2	50.0	1	100.0	2	50.0	0	0.0	0	0.0	0	0.0	0	0.0	1	14.3	0	0.0	0	0.0	0	0.0	0	0.0	0	0.0	6	50.0
Homerton	0	0.0	0	0.0	6	85.7	1	100.0	0	0.0	0	0.0	0	0.0	0	0.0	0	0.0	0	0.0	0	0.0	0	0.0	1	16.7	0	0.0	3	50.0
Hughes Hall	0	0.0	1	16.7	5	83.3	4	66.7	0	0.0	0	0.0	0	0.0	0	0.0	0	0.0	0	0.0	0	0.0	0	0.0	0	0.0	0	0.0	5	50.0
Jesus	1	33.3	0	0.0	2	66.7	3	100.0	0	0.0	0	0.0	0	0.0	0	0.0	0	0.0	0	0.0	0	0.0	0	0.0	0	0.0	0	0.0	7	58.3
King's	2	40.0	1	14.3	2	40.0	4	57.1	0	0.0	0	0.0	1	20.0	2	28.6	0	0.0	0	0.0	0	0.0	0	0.0	0	0.0	0	0.0	2	100.0
Lucy Cavendish	0	0.0	0	0.0	0	0.0	1	50.0	0	0.0	1	50.0	0	0.0	0	0.0	0	0.0	0	0.0	0	0.0	0	0.0	0	0.0	0	0.0	1	33.3
Magdalene	1	50.0	0	0.0	0	0.0	0	0.0	0	0.0	0	0.0	0	0.0	0	0.0	0	0.0	0	0.0	0	0.0	0	0.0	0	0.0	0	0.0	1	100.0
New Hall	0	0.0	0	0.0	0	0.0	1	100.0	0	0.0	0	0.0	0	0.0	0	0.0	0	0.0	0	0.0	0	0.0	0	0.0	0	0.0	0	0.0	6	50.0
Newnham	0	0.0	2	33.3	0	0.0	4	66.7	0	0.0	0	0.0	0	0.0	0	0.0	0	0.0	0	0.0	0	0.0	0	0.0	0	0.0	0	0.0	3	50.0
Pembroke	1	33.3	1	33.3	2	66.7	2	66.7	0	0.0	0	0.0	0	0.0	0	0.0	0	0.0	0	0.0	0	0.0	0	0.0	0	0.0	0	0.0	3	50.0
Peterhouse	1	100.0	0	0.0	0	0.0	1	100.0	0	0.0	0	0.0	0	0.0	0	0.0	0	0.0	0	0.0	0	0.0	0	0.0	0	0.0	0	0.0	1	50.0
Queens'	2	33.3	0	0.0	3	50.0	8	100.0	0	0.0	0	0.0	0	0.0	0	0.0	0	0.0	0	0.0	0	0.0	0	0.0	0	0.0	0	0.0	6	42.9
Robinson	1	33.3	0	0.0	1	33.3	1	50.0	1	33.3	1	50.0	0	0.0	0	0.0	1	16.7	0	0.0	0	0.0	0	0.0	0	0.0	0	0.0	3	60.0
Selwyn	1	25.0	0	0.0	1	25.0	1	50.0	1	25.0	0	0.0	1	33.3	0	0.0	0	0.0	0	0.0	0	0.0	0	0.0	1	25.0	0	0.0	4	66.7
Sidney Sussex	0	0.0	0	0.0	0	0.0	1	100.0	0	0.0	0	0.0	0	0.0	0	0.0	0	0.0	0	0.0	0	0.0	0	0.0	0	0.0	0	0.0	3	75.0
St Catharine's	0	0.0	1	50.0	4	100.0	1	50.0	0	0.0	0	0.0	0	0.0	0	0.0	0	0.0	0	0.0	0	0.0	0	0.0	0	0.0	0	0.0	4	66.7
St Edmund's	1	20.0	0	0.0	2	40.0	2	40.0	0	0.0	1	33.3	2	40.0	0	0.0	0	0.0	0	0.0	0	0.0	0	0.0	0	0.0	0	0.0	5	62.5
St John's	2	40.0	0	0.0	2	40.0	1	100.0	0	0.0	0	0.0	1	20.0	0	0.0	0	0.0	0	0.0	0	0.0	0	0.0	0	0.0	0	0.0	5	83.3
Trinity	0	0.0	1	14.3	7	87.5	4	57.1	0	0.0	0	0.0	1	12.5	1	14.3	0	0.0	0	0.0	0	0.0	0	0.0	0	0.0	1	14.3	8	53.3
Trinity Hall	1	33.3	1	14.3	2	66.7	5	71.4	0	0.0	0	0.0	0	0.0	0	0.0	0	0.0	0	0.0	0	0.0	0	0.0	0	0.0	0	0.0	3	30.0
Wolfson	1	12.5	3	60.0	4	50.0	1	20.0	1	12.5	1	20.0	2	25.0	0	0.0	0	0.0	0	0.0	0	0.0	0	0.0	0	0.0	0	0.0	8	61.5
Totals	23	21.3	18	18.0	63	58.3	66	66.0	5	4.6	6	6.0	15	13.9	9	9.0	0	0.0	2	1.9	1	1.0	108	51.9	100	48.1	100	48.1		

This table excludes unclassified Preliminary Examinations in History, Education Studies, Classics, Oriental studies, and the First Examination in Theology for Ministry (see Table 9a).

Results in All Examinations by College, 2007

	Class I		Class II Division (1)		Class II Undivided		Class II Division (2)		Class III		Other Results		Total Candidates	
	No.	%	No.	%	No.	%	No.	%	No.	%	No.	%	No.	%
Christ's	111	29.4	166	44.0	30	8.0	54	14.3	10	2.7	6	1.6	377	
Churchill	118	27.4	189	43.9	28	6.5	80	18.6	14	3.2	2	0.5	431	
Clare	79	20.0	201	50.9	42	10.6	60	15.2	9	2.3	4	1.0	395	
Clare Hall	2	40.0	3	60.0	0	0.0	0	0.0	0	0.0	0	0.0	5	
Corpus Christi	60	26.3	110	48.2	15	6.6	36	15.8	7	3.1	0	0.0	228	
Darwin	8	38.1	11	52.4	0	0.0	1	4.8	0	0.0	1	4.8	21	
Downing	94	24.5	193	50.3	31	8.1	55	14.3	8	2.1	3	0.8	384	
Emmanuel	129	30.1	196	45.7	32	7.5	58	13.5	7	1.6	7	1.6	429	
Fitzwilliam	103	23.4	216	49.1	32	7.3	73	16.6	14	3.2	2	0.5	440	
Girton	77	16.6	255	55.1	31	6.7	80	17.3	13	2.8	7	1.5	463	
Gonville and Caius	115	24.7	223	48.0	35	7.5	78	16.8	12	2.6	2	0.4	465	
Homerton	46	10.0	276	59.9	20	4.3	99	21.5	13	2.8	7	1.5	461	
Hughes Hall	8	12.7	26	41.3	0	0.0	21	33.3	4	6.3	4	6.3	63	
Jesus	111	24.8	234	52.2	26	5.8	64	14.3	11	2.5	2	0.4	448	
King's	76	22.0	173	50.0	24	6.9	54	15.6	16	4.6	3	0.9	346	
Lucy Cavendish	8	14.3	25	44.6	4	7.1	14	25.0	3	5.4	2	3.6	56	
Magdalene	62	19.5	170	53.5	22	6.9	51	16.0	5	1.6	8	2.5	318	
New Hall	46	14.3	168	52.2	32	9.9	65	20.2	8	2.5	3	0.9	322	
Newnham	53	15.1	191	54.4	33	9.4	57	16.2	13	3.7	4	1.1	351	
Pembroke	107	28.1	178	46.7	27	7.1	60	15.7	9	2.4	0	0.0	381	
Peterhouse	31	14.0	120	54.3	14	6.3	48	21.7	7	3.2	1	0.5	221	
Queens'	118	24.7	232	48.5	29	6.1	80	16.7	15	3.1	4	0.8	478	
Robinson	68	18.7	187	51.4	21	5.8	74	20.3	13	3.6	1	0.3	364	
Selwyn	77	23.2	190	57.2	24	7.2	32	9.6	6	1.8	3	0.9	332	
Sidney Sussex	70	22.1	165	52.1	26	8.2	48	15.1	7	2.2	1	0.3	317	
St Catharine's	98	24.6	208	52.3	28	7.0	53	13.3	5	1.3	6	1.5	398	
St Edmund's	11	10.0	43	39.1	7	6.4	36	32.7	9	8.2	4	3.6	110	
St John's	106	20.3	267	51.2	40	7.7	97	18.6	11	2.1	0	0.0	521	
Trinity	179	28.4	302	47.9	25	4.0	101	16.0	12	1.9	11	1.7	630	
Trinity Hall	72	21.7	175	52.7	27	8.1	52	15.7	3	0.9	3	0.9	332	
Wolfson	11	15.5	34	47.9	4	5.6	14	19.7	6	8.5	2	2.8	71	
Totals	2,254	22.2	5,127	50.5	709	7.0	1,695	16.7	270	2.7	103	1.0	10,158	

This table excludes unclassified Preliminary Examinations in History, Education Studies, Classics, Oriental studies, and the First Examination in Theology for Ministry (see Table 9a).

Men's and Women's Results in All Examinations by College, 2007

	Class I:				Class II (1):				Class II (2):				Class III:				Others:				Total:					
	Men		Women		Men		Women		Men		Women		Men		Women		Men		Women		Men		Women			
	No.	%	No.	%	No.	%	No.	%	No.	%	No.	%	No.	%	No.	%	No.	%	No.	%	No.	%	No.	%		
Christ's	83	35.5	28	19.6	98	41.9	68	47.6	15	6.4	15	10.5	32	13.7	22	15.4	5	3.5	1	0.4	5	3.5	234	62.1	143	37.9
Churchill	88	28.6	30	24.4	132	42.9	57	46.3	18	5.8	10	8.1	60	19.5	20	16.3	8	2.6	2	0.6	0	0.0	308	71.5	123	28.5
Clare	51	24.5	28	15.0	94	45.2	107	57.2	23	11.1	19	10.2	32	15.4	28	15.0	6	2.9	2	1.0	2	1.1	208	52.7	187	47.3
Clare Hall	0	0.0	2	66.7	2	100.0	1	33.3	0	0.0	0	0.0	0	0.0	0	0.0	0	0.0	0	0.0	0	0.0	2	40.0	3	60.0
Corpus Christi	41	32.5	19	18.6	53	42.1	57	55.9	7	5.6	8	7.8	22	17.5	14	13.7	3	2.4	4	3.9	0	0.0	126	55.3	102	44.7
Darwin	8	53.3	0	0.0	6	40.0	5	83.3	0	0.0	0	0.0	0	0.0	1	16.7	0	0.0	0	0.0	1	6.7	15	71.4	6	28.6
Downing	58	28.0	36	20.3	97	46.9	96	54.2	16	7.7	15	8.5	33	15.9	22	12.4	7	3.3	2	0.9	2	0.9	213	49.7	216	50.3
Emmanuel	73	34.3	56	25.9	87	40.8	109	50.5	11	5.2	21	9.7	30	14.1	28	13.0	8	3.0	6	3.5	1	0.4	270	61.4	170	38.6
Fitzwilliam	72	26.7	31	18.2	119	44.1	97	57.1	20	7.4	12	7.1	50	18.5	23	13.5	8	3.3	5	2.3	1	0.4	243	52.5	220	47.5
Girton	50	20.6	27	12.3	125	51.4	130	59.1	18	7.4	13	5.9	41	16.9	39	17.7	8	3.3	5	2.3	1	0.4	274	58.9	191	41.1
Gonville and Caius	71	25.9	44	23.0	130	47.4	93	48.7	19	6.9	16	8.4	44	16.1	34	17.8	9	3.3	3	1.6	1	0.4	196	56.6	150	43.4
Homerton	21	10.4	25	9.7	101	50.0	175	67.6	14	6.9	6	2.3	55	27.2	44	17.0	8	4.0	5	1.9	3	1.5	202	43.8	259	56.2
Hughes Hall	4	10.8	4	15.4	17	45.9	9	34.6	0	0.0	0	0.0	10	27.0	11	42.3	2	5.4	2	7.7	4	10.8	37	58.7	26	41.3
Jesus	69	26.6	42	22.2	129	49.8	105	55.6	13	5.0	13	6.9	40	15.4	24	12.7	7	2.7	4	2.1	1	0.4	259	57.8	189	42.2
King's	52	26.5	24	16.0	93	47.4	80	53.3	8	4.1	16	10.7	31	15.8	23	15.3	9	4.6	7	4.7	3	1.5	196	56.6	150	43.4
Lucy Cavendish	0	0.0	8	14.3	0	0.0	25	44.6	0	0.0	4	7.1	0	0.0	14	25.0	0	0.0	3	5.4	0	0.0	0	0.0	56	100.0
Magdalene	39	24.7	23	14.4	71	44.9	99	61.9	10	6.3	12	7.5	31	19.6	20	12.5	3	1.9	2	1.3	4	2.5	158	49.7	160	50.3
New Hall	0	0.0	46	14.3	0	0.0	168	52.2	0	0.0	32	9.9	0	0.0	65	20.2	0	0.0	8	2.5	0	0.0	0	0.0	322	100.0
Newham	0	0.0	53	15.1	0	0.0	191	54.4	0	0.0	33	9.4	0	0.0	57	16.2	0	0.0	13	3.7	0	0.0	0	0.0	351	100.0
Pembroke	62	33.3	45	23.1	71	38.2	107	54.9	9	4.8	18	9.2	40	21.5	20	10.3	4	2.2	5	2.6	0	0.0	186	48.8	195	51.2
Peterhouse	25	19.4	6	6.5	64	49.6	56	60.9	5	3.9	9	9.8	29	22.5	19	20.7	5	3.9	2	2.2	1	0.8	129	58.4	92	41.6
Queens'	82	28.7	36	18.8	131	45.8	101	52.6	13	4.5	16	8.3	50	17.5	30	15.6	8	2.8	7	3.6	2	0.7	286	59.8	192	40.2
Robinson	53	22.5	15	11.7	123	52.1	64	50.0	11	4.7	10	7.8	42	17.8	32	25.0	6	2.5	7	5.5	1	0.4	236	64.8	128	35.2
Selwyn	51	27.1	26	18.1	96	51.1	94	65.3	13	6.9	11	7.6	22	11.7	10	6.9	4	2.1	2	1.4	2	1.1	188	56.6	144	43.4
Sidney Sussex	40	24.1	30	19.9	84	50.6	81	53.6	9	5.4	17	11.3	27	16.3	21	13.9	5	3.0	2	1.3	1	0.6	166	52.4	151	47.6
St Catharine's	55	26.8	43	22.3	98	47.8	110	57.0	13	6.3	15	7.8	32	15.6	21	10.9	3	1.5	2	1.0	4	2.0	205	51.5	193	48.5
St Edmund's	10	14.3	1	2.5	29	41.4	14	35.0	4	5.7	3	7.5	20	28.6	16	40.0	3	4.3	6	15.0	4	5.7	70	63.6	40	36.4
St John's	79	24.6	27	13.5	148	46.1	119	59.5	20	6.2	20	10.0	65	20.2	32	16.0	9	2.8	2	1.0	0	0.0	321	61.6	200	38.4
Trinity	137	34.0	42	18.5	181	44.9	121	53.3	18	4.5	7	3.1	54	13.4	47	20.7	8	2.0	4	1.8	5	1.2	403	64.0	227	36.0
Trinity Hall	45	27.1	27	16.3	82	49.4	93	56.0	8	4.8	19	11.4	27	16.3	25	15.1	1	0.6	2	1.2	3	1.8	166	50.0	166	50.0
Wolfson	4	10.0	7	22.6	19	47.5	15	48.4	3	7.5	1	3.2	8	20.0	6	19.4	5	12.5	1	3.2	1	2.5	40	56.3	31	43.7
Totals	1,423	26.6	831	17.3	2,480	46.4	2,647	55.0	318	5.9	391	8.1	927	17.3	768	16.0	146	2.7	124	2.6	54	1.0	5,348	52.6	4,810	47.4

This table excludes unclassified Preliminary Examinations in History, Education Studies, Classics, Oriental studies, and the First Examination in Theology for Ministry (see Table 9a).

Unclassified Preliminary and Other Examinations 2007

Key: A = Classified
 B = Insufficient Papers to be Classified
 C = Not Classified

	Classics 1A			Classics 2			Education Studies 1			Education Studies 2			History 1			Oriental Studies 1			Theology for Ministry 1			
	A	B	C	A	B	C	A	B	C	A	B	C	A	B	C	A	B	C	A	B	C	
Christ's																						
Churchill	1						2															
Clare							1														1	
Clare Hall																						
Corpus Christi																						
Darwin																						
Downing	1																					
Emmanuel																						
Fitzwilliam																					1	
Girton																					1	
Gonville and Caius	2																					
Homerton																						
Hughes Hall																						
Jesus	1																					
King's	3						1															
Lucy Cavendish																						
Magdalene																						
New Hall	2																					
Newnham																						
Pembroke																						
Peterhouse																						
Queens'																						
Robinson	1																					
Selwyn																						
Sidney Sussex																						
St Catharine's																						
St Edmund's																						
St John's																						
Trinity																						
Trinity Hall																						
Wolfson																						
Totals	11	0	0	2	0	0	79	0	2	0	0	0	0	158	13	2	54	0	1	14	0	

