

University of Cambridge “factbook”

Introduction

- This pack aims to provide a high-level “size and shape” profile of the University’s main activities through a series of quantitative measures by School or School-level equivalent grouping across seven thematic sections.
- Each topic provides a time series of the measures in question (e.g. student headcount, income, etc.) to illustrate recent trends.
- Benchmarking is included against the Russell Group and key peer institutions to provide comparative context.

Summary

1. Students (find more about definitions on slides [6](#) - [7](#) and [8](#))

Headcount data for undergraduate (UG), postgraduate taught (PGT), and postgraduate research (PGR) students. Follows Higher Education Statistics Agency (HESA) definitions. Includes cross-school courses and Russell Group comparisons.

2. Admissions, Inclusion, and Attainment (find more on slide [17](#))

An overview of admissions, student experience, and outcomes, with insights into widening participation, disability and mental health disclosures, and awarding gaps. Includes postgraduate trends and Research Council funding for PhD entrants.

3. Staff (find more about definitions on slides [30](#) and [37](#))

FTE data as of 31 July each year, categorised by Academic, Academic-Related, Researcher, Assistant Staff, and Apprentice roles and the academic function as defined by HESA. Includes breakdowns by academic grade, by contract type, by percentage difference YoY and Russell Group benchmarks.

Summary (continued)

4. Research (find more about definitions on slides [41](#) and [42](#))

Research income trends over six years, including capital grants, categorised by academic subjects expressed as HESA cost centres and grouped into broader research areas. Includes funder mix and Russell Group comparisons.

5. Space (find more about definitions on slides [48](#) and [50](#))

University of Cambridge Net Assignable Area (NAA) data by School and Gross Internal Area (GIA) for the leading five Russell Group Universities.

6. Finance (find more about definitions on slides [52](#) and [53](#))

Direct income, expenditure and gross contribution by School, and within School, by activity (Teaching, PGR, Research, Other). Data taken from the EFT prototype. Notes on financial anomalies and transition to new accounting methodology to be delivered by the new finance system.

Summary (continued)

7. Domestic League Tables (find more about definitions on slides [58](#) and [59](#))

Rankings from The Guardian, Complete University Guide, and The Times & Sunday Times. Showing methodological differences and historical ranking trends.

8. International League Tables (find more about definitions on slides [64](#) and [65](#))

Rankings from QS, ARWU, and THE and an overview of methodologies and historical performance.

Section 1 (Students): How many students are engaged in the University's award-bearing courses?

- The numbers represents headcount of students who were active on an award-bearing course at any given point throughout each academic year.
- Underlying data is sourced from the University's student records system (CamSIS).
- The numbers cover students on courses open to members of the University (matriculated) as well as certificates and diplomas open to non-members (non-matriculated).
- Total population numbers include postgraduate research students with the writing up status.
- "Cross-School UG courses" category includes courses that cannot be straightforwardly attributed to one institution and School, such as Medicine, Natural Science Tripos and Foundation Year.

Section 1 (Students) – continued: other student metrics

- The numbers represents headcount of students who were active on an award-bearing course at any given point throughout each academic year.
- Underlying data is sourced from the University’s student records system (CamSIS).
- The numbers cover students on courses open to members of the University (matriculated) as well as certificates and diplomas open to non-members (non-matriculated).
- Total population numbers include postgraduate research students with the writing up status.
- “Cross-School UG courses” category includes courses that cannot be straightforwardly attributed to one institution and School, such as Medicine, Natural Science Tripos and Foundation Year.

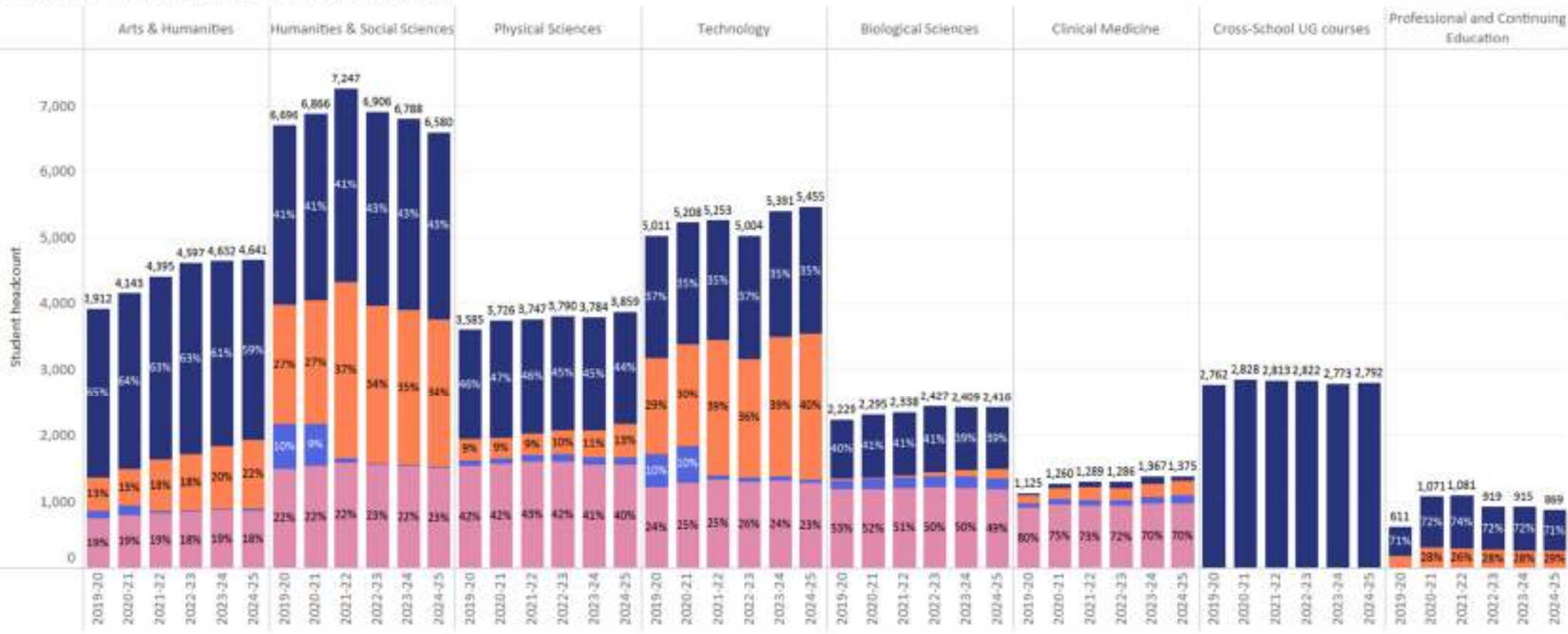
Student-related definitions

- **UG** = undergraduate level of study, that covers higher education courses for which there is no formal condition to already be qualified to a degree level (Level 6 in the [Framework for Higher Education Qualifications](#)). UG students may be studying towards a first degree, integrated Masters' programme such as a four-year Master of Engineering (MEng), Higher Education Certificate, Higher Education Diploma or equivalent
- **PGT** = postgraduate taught level of study, that covers higher education courses which have degree level qualification as a condition of entry and have larger taught (more than 50% of the course structure is taught elements as compared to original research work)
- **PGR** = postgraduate taught level of study, that covers research-intensive programmes focused on independent study and include requirement to produce original research work. These can be at a non-doctorate level such as Master of Research (MRes) or Master of Philosophy (MPhil) by thesis, or at a doctorate level such as Doctor of Philosophy (PhD) or Doctor of Education (EdD) etc.
- **The Russell Group** is a self-selected association of 24 leading public research universities.

How has the size and shape of student population changed since 2019-20?

Student headcount of Total population, by School and level of study.

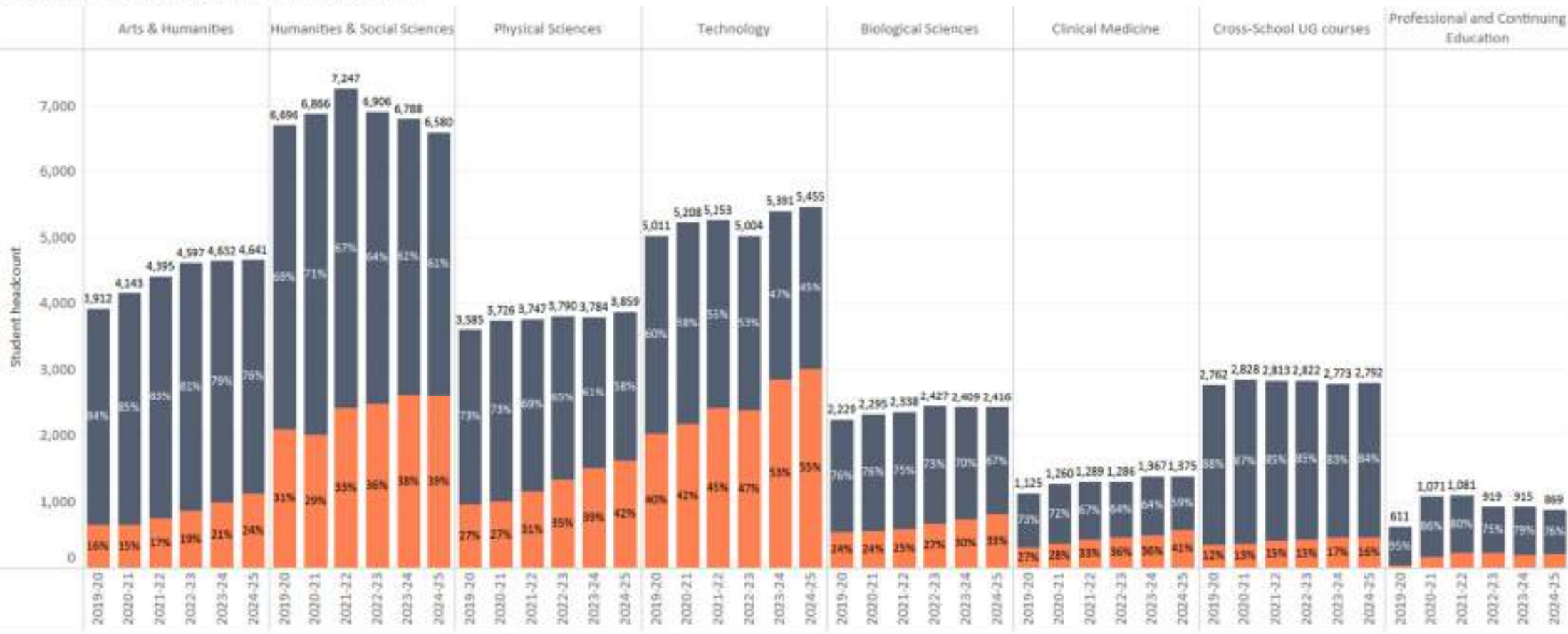
Level Undergraduate PGT non-doctorate PGR non-doctorate Doctorate



https://tableau.blue.cam.ac.uk/#/site/InformationHub/views/Studentnumbers_17135216703500/Councilview

How has the size and shape of student population changed since 2019-20?

Student headcount of Total population, by School and fee status.

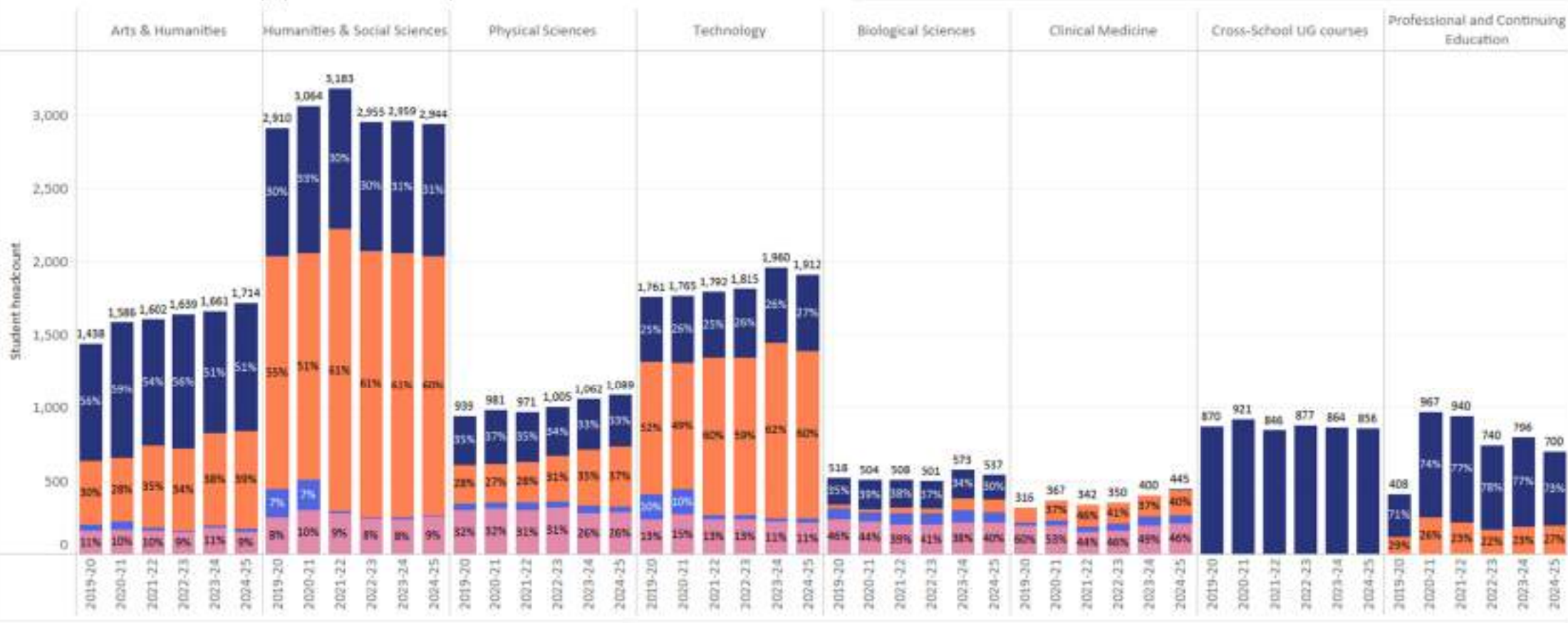


https://tableau.blue.cam.ac.uk/#/site/InformationHub/views/Studentnumbers_17135216703500/Councilview

How has the size and shape of student population changed since 2019-20?

Student headcount of New entrants only, by School and level of study.

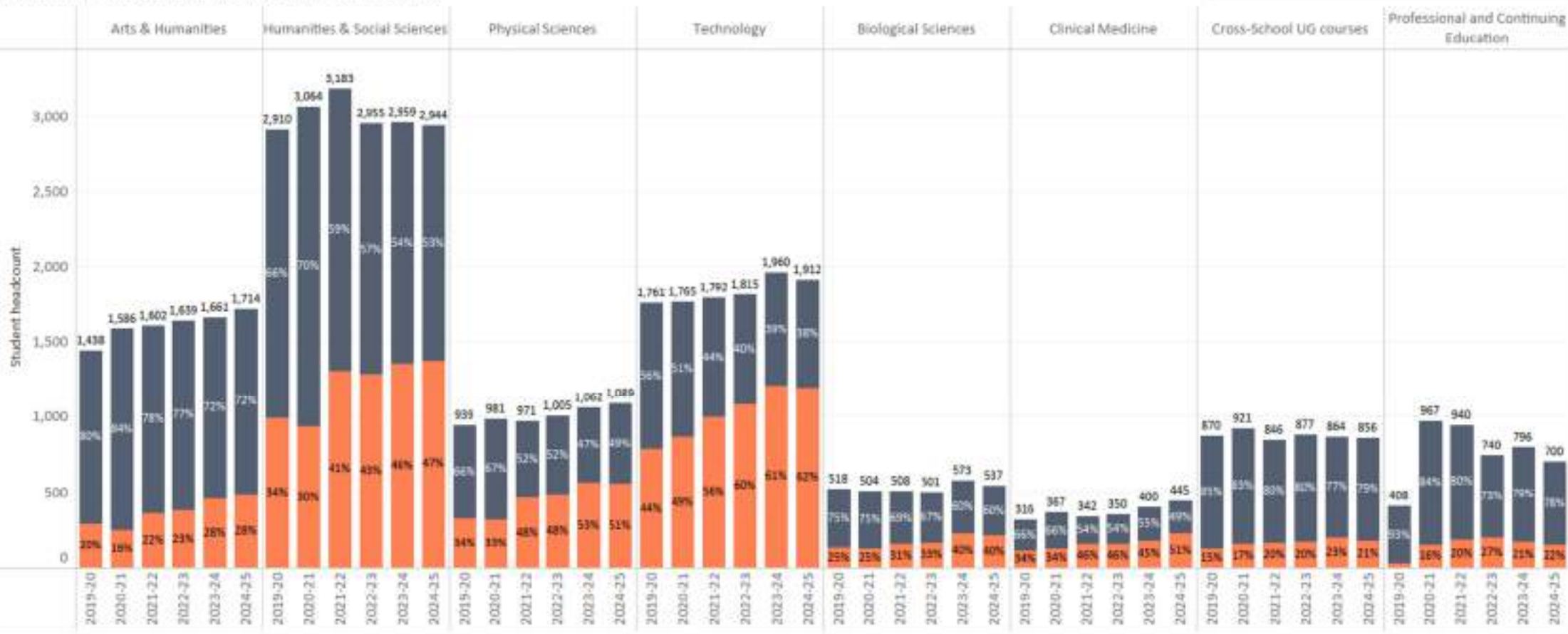
Level Undergraduate PGT non-doctorate PGR non-doctorate Doctorate



https://tableau.blue.cam.ac.uk/#/site/InformationHub/views/Studentnumbers_17135216703500/Councilview

How has the size and shape of student population changed since 2019-20?

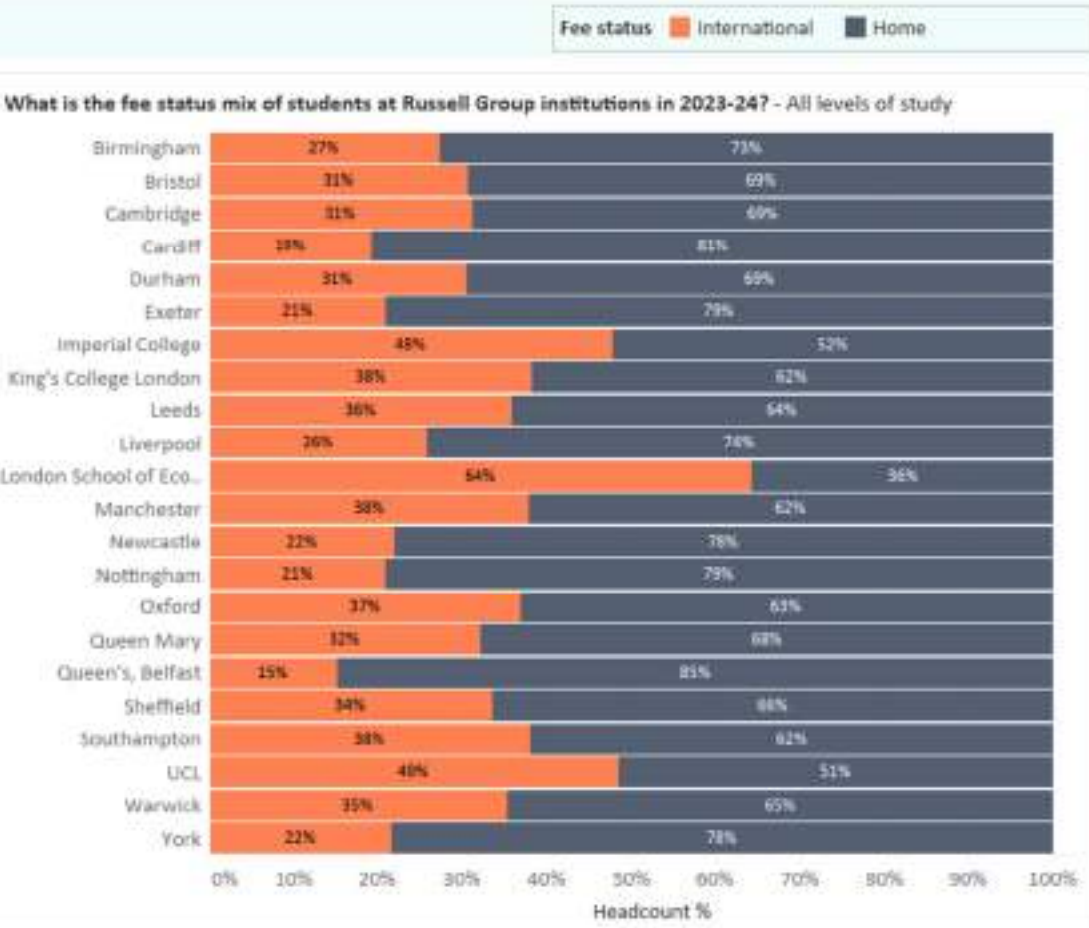
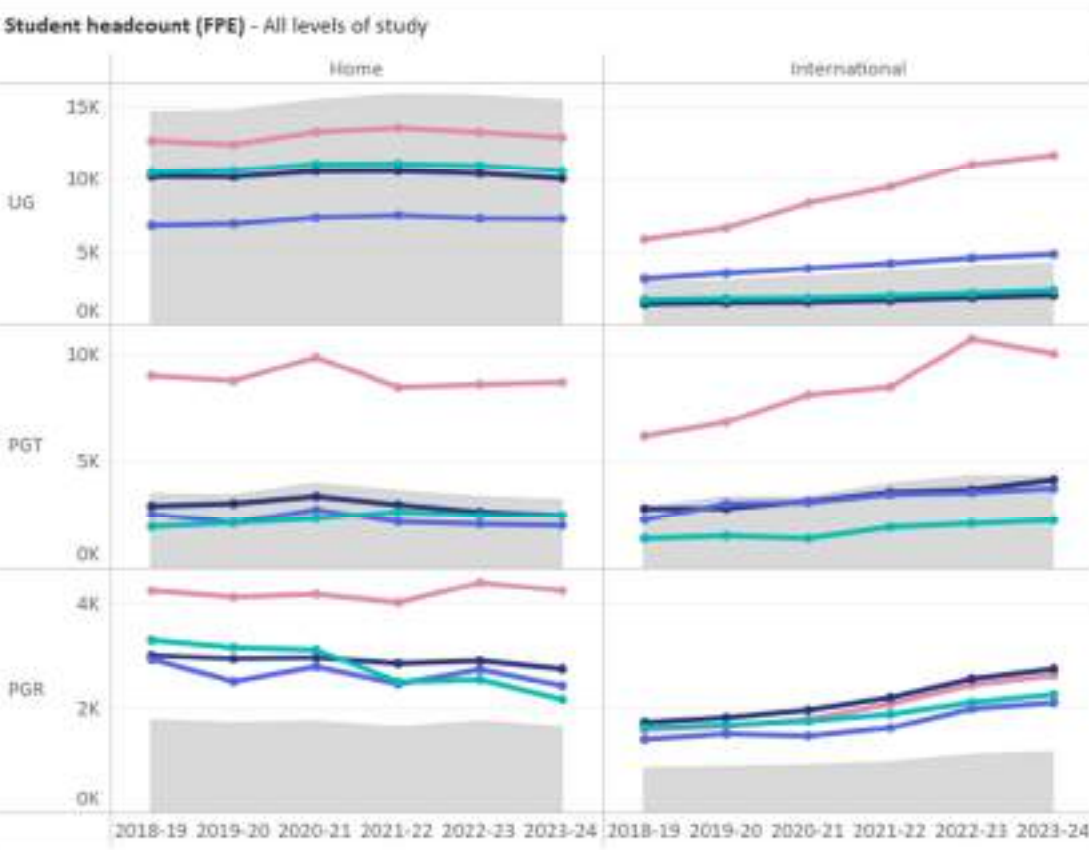
Student headcount of New entrants only, by School and fee status.



https://tableau.blue.cam.ac.uk/#/site/InformationHub/views/Studentnumbers_17135216703500/Councilview

How does Cambridge compare to other Russell Group institutions?

University ■ Cambridge ■ Imperial College ■ Oxford ■ UCL ■ Russell Group average



https://tableau.blue.cam.ac.uk/#/site/InformationHub/views/Studentnumbers_17135216703500/RussellGroupcomparison

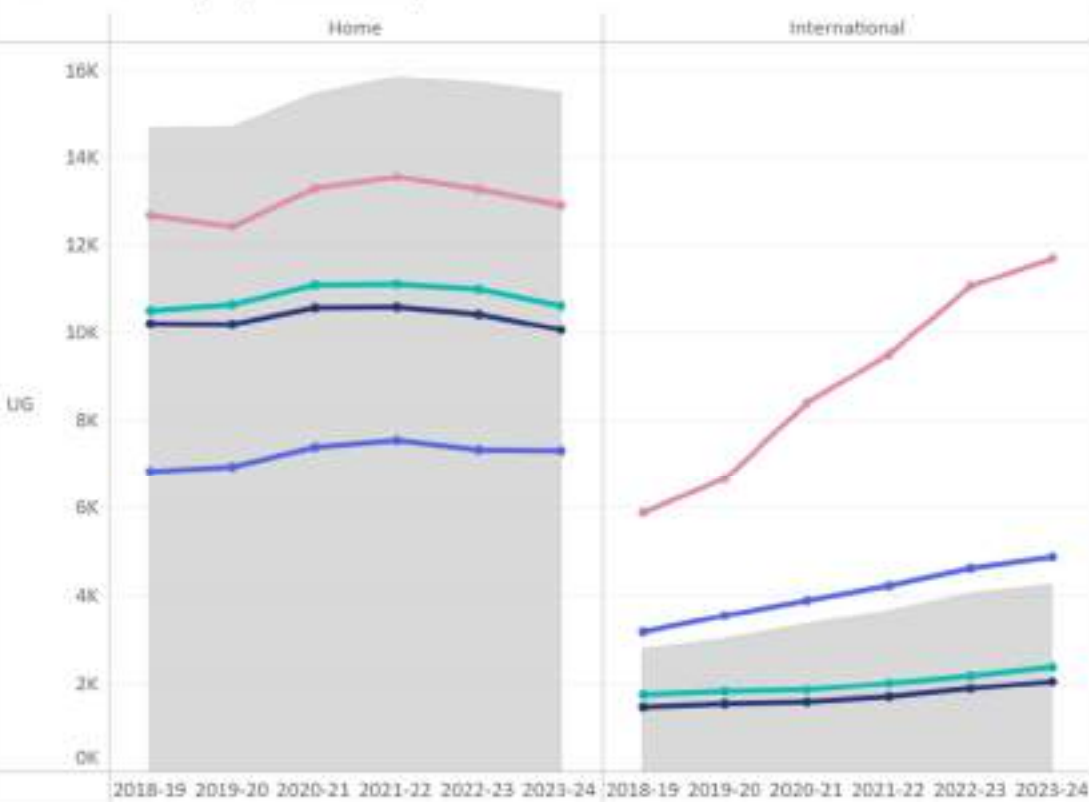
How does Cambridge compare to other Russell Group institutions? UG



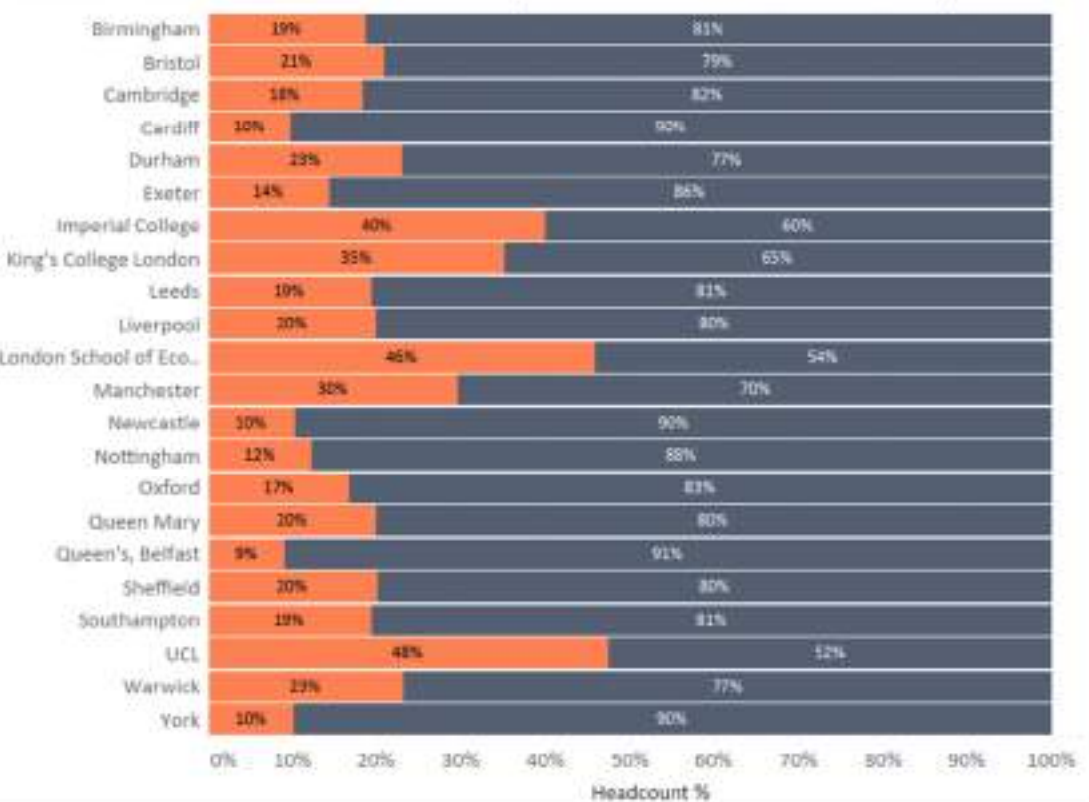
University ■ Cambridge ■ Imperial College ■ Oxford ■ UCL ■ Russell Group average

Fee status ■ International ■ Home

Student headcount (FPE) - UG level of study



What is the fee status mix of students at Russell Group institutions in 2023-24? - UG level of study



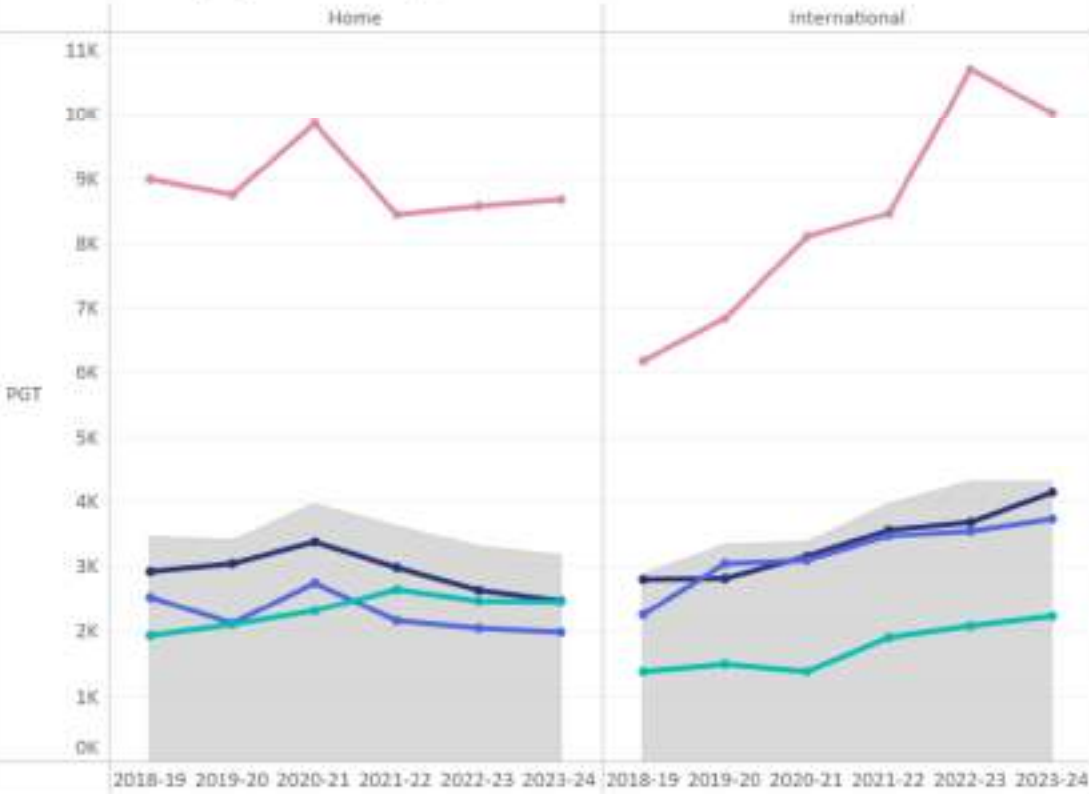
https://tableau.blue.cam.ac.uk/#/site/InformationHub/views/Studentnumbers_17135216703500/RussellGroupcomparison

How does Cambridge compare to other Russell Group institutions? PGT

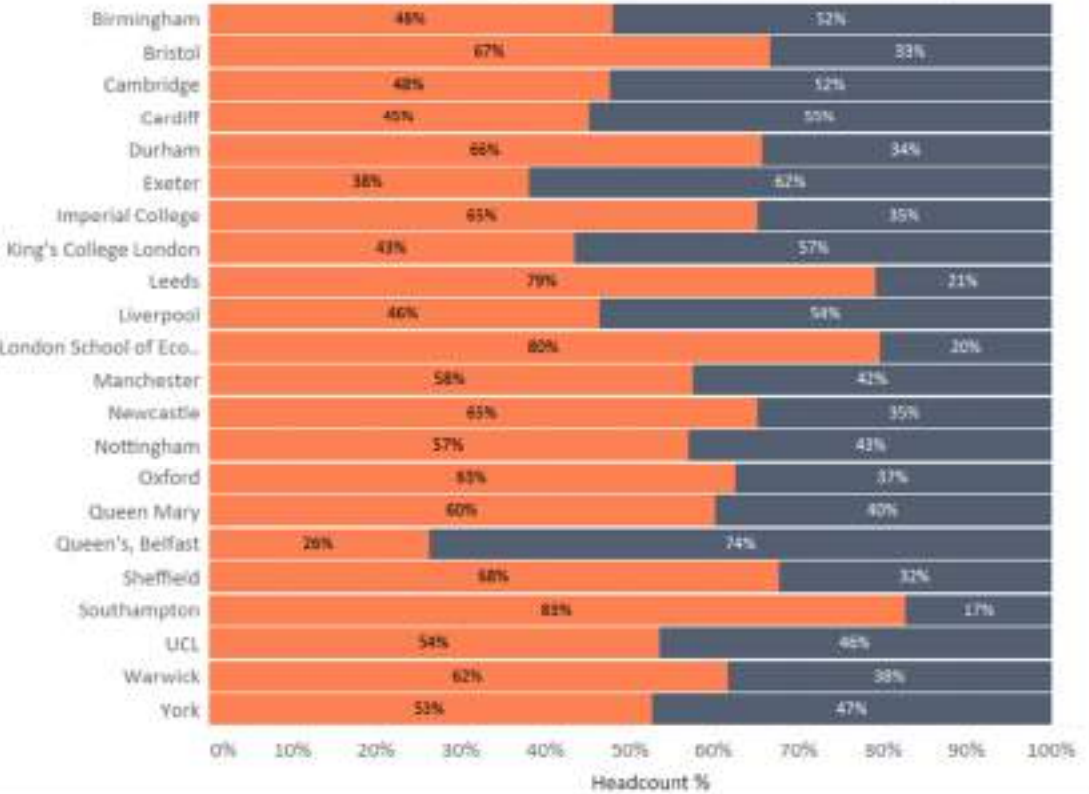
University ■ Cambridge ■ Imperial College ■ Oxford ■ UCL ■ Russell Group average

Fee status ■ International ■ Home

Student headcount (FPE) - PGT level of study



What is the fee status mix of students at Russell Group institutions in 2023-24? - PGT level of study



https://tableau.blue.cam.ac.uk/#/site/InformationHub/views/Studentnumbers_17135216703500/RussellGroupcomparison

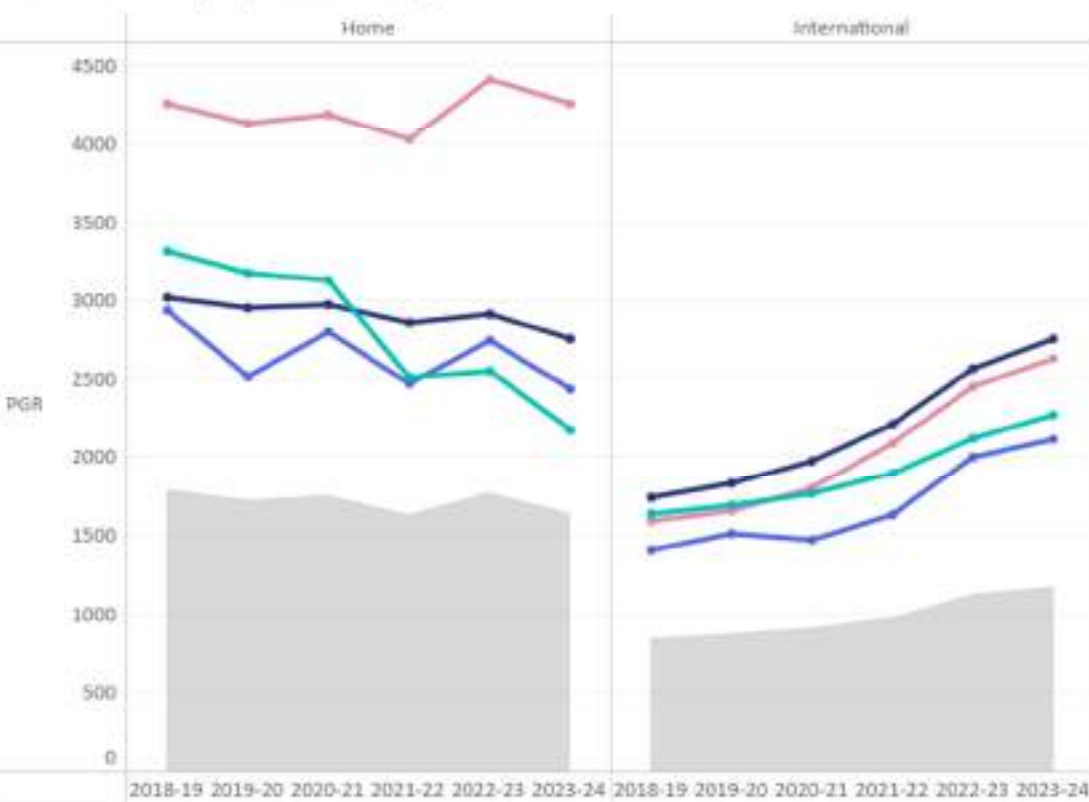
How does Cambridge compare to other Russell Group institutions? PGR



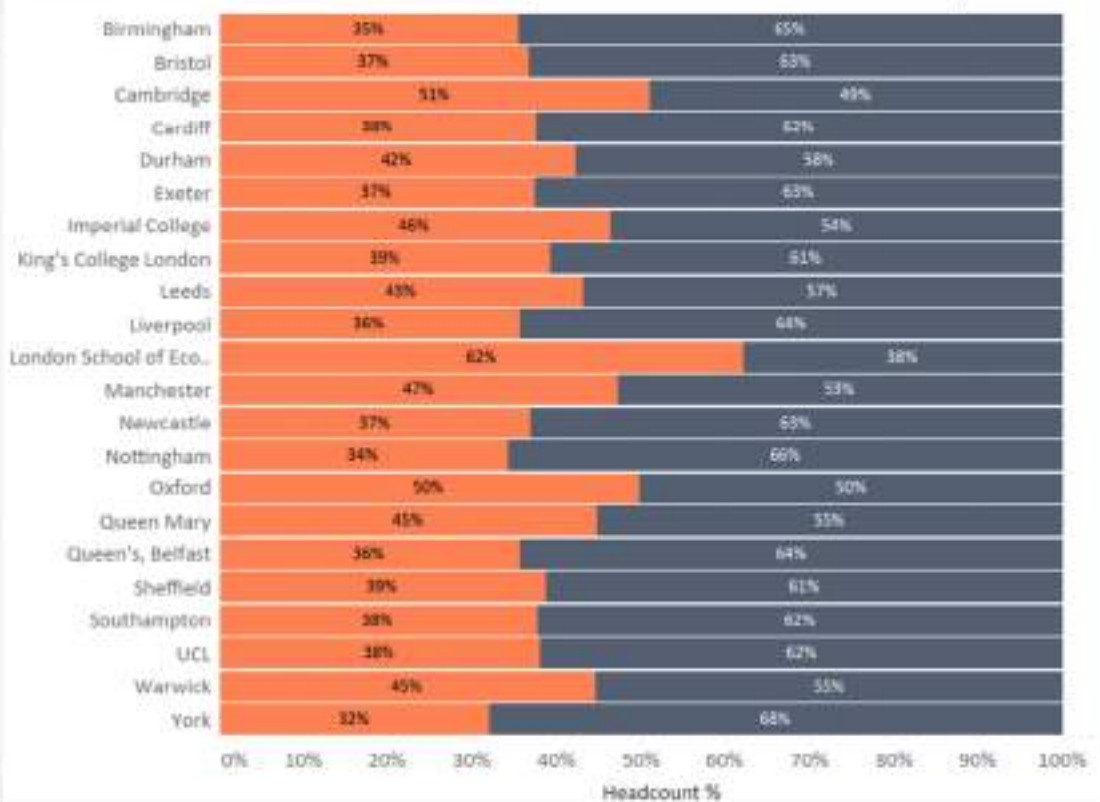
University ■ Cambridge ■ Imperial College ■ Oxford ■ UCL ■ Russell Group average

Fee status ■ International ■ Home

Student headcount (FPE) - PGR level of study



What is the fee status mix of students at Russell Group institutions in 2023-24? - PGR level of study



https://tableau.blue.cam.ac.uk/#/site/InformationHub/views/Studentnumbers_17135216703500/RussellGroupcomparison

Section 2: Admissions, Inclusion, and Attainment

- Admissions Trends
 - Undergraduate and Postgraduate (PGT & PGR) admissions data for 2024/25, with breakdowns by gender and ethnicity.
- Widening Participation (WP)
 - Insights into postgraduate WP trends (draft data from 2020–2024).
- Student Experience
 - NSS 2025: University vs sector comparison on positive responses.
 - Disability & Mental Health: Time series and category breakdowns of disclosures and service usage.
- Student Outcomes
 - Good Honours awarding gaps by gender and ethnicity in undergraduate exams.
- Graduate Outcomes
 - Progression into 'highly skilled employment 'alongside sector comparators

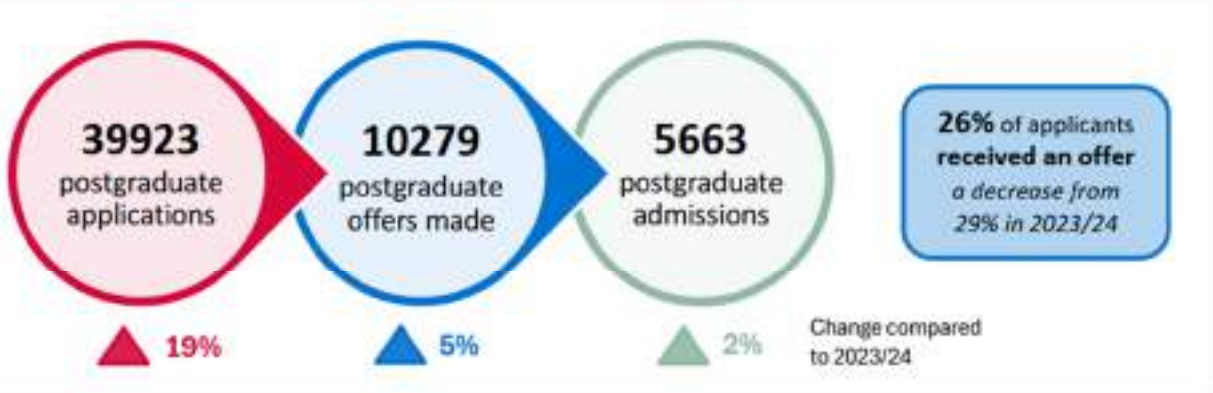
Undergraduate Admissions



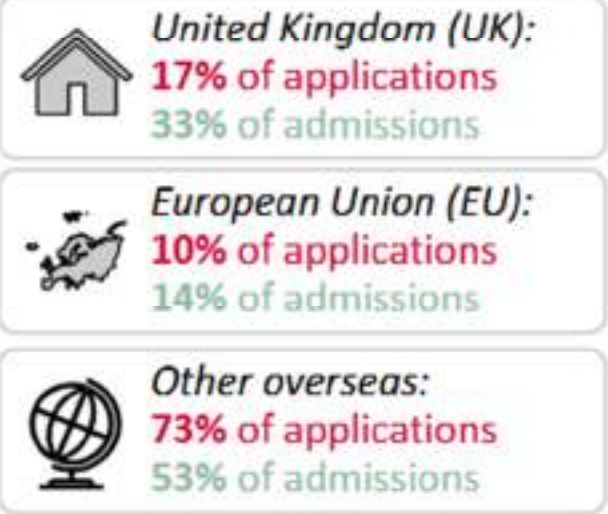
Detailed views available [online](#)



Postgraduate Admissions 2024/25



Primary citizenship of the postgraduate admissions population



Postgraduate Admissions

by reported Gender 24/25

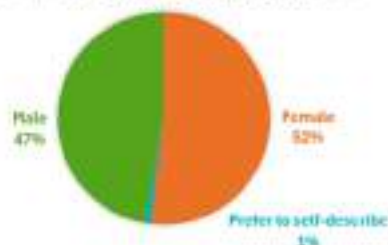
Applications, by gender reported

Excludes 3.4% (1372) with no gender group reported.



Admissions, by gender reported

Excludes 0.2% (14) with no gender group reported.



Application, offers and admissions for all four postgraduate admitting authorities, by gender

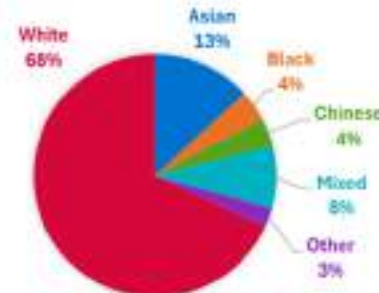
Note that the Faculty of Education does not hold gender data for all applicants or offer holders as this field is not mandatory on the Department for Education PGCE application (and is collected by the University at the point of admission).¹⁰

Gender	Numbers			Conversion rates		
	Applications	Offers Made	Admissions	Application to Offer	Application to Admission	Offer to Admission
Female	18598	5172	2937	27.8%	15.8%	56.8%
Male	19718	4885	2990	24.8%	13.5%	54.3%
Other (prefer to self-describe)	203	91	52	24.3%	18.0%	57.3%
Unknown / prefer not to specify ¹¹	1372	121	34	-	-	-
Total	39923	10279	5983	25.7%	14.2%	55.3%
Total with data	38551	10158	5849	26.3%	14.7%	55.8%

by Ethnicity 24/25

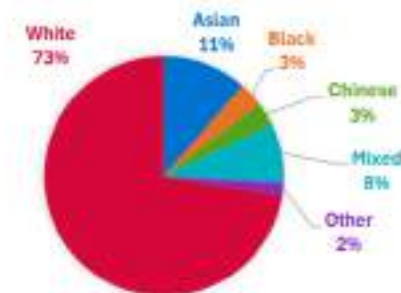
Applications from those with United Kingdom (UK) citizenship, by ethnic group reported

Excludes 12.3% (853) with no ethnicity data reported.



Admissions for those with United Kingdom (UK) citizenship, by ethnic group reported

Excludes 3.6% (68) with no ethnicity data reported.



Application, offers and admissions from individuals with United Kingdom (UK) citizenship for all four postgraduate admitting authorities, by ethnicity group

Note that the Faculty of Education does not hold ethnicity data for all applicants or offer holders as this field is not mandatory on the Department for Education PGCE application (and is collected by the University at the point of admission).¹²

Conversion rates are not calculated where the baseline group is less than 10.

Historic Doctoral Admissions shown by Higher Education Institutional Pathway (UK only)



Applicant Pool 13.83K	Percentage 100.00%	Application to Offer Rate 36%	Offer to Admission Rate 61%	Confirmed Cohort 3016	Percentage 100.00%
---------------------------------	------------------------------	---	---------------------------------------	---------------------------------	------------------------------

The data included on this page can be filtered by School.

You are able to select multiples by holding down the Control key as you make your selection.

To expand graphs, go to the top right of the visual and choose 'Focus Mode'.

- School of Arts and Humanities
- School of the Humanities and...
- School of Clinical Medicine
- School of the Physical Sciences
- School of Technology
- School of the Biological Scien...

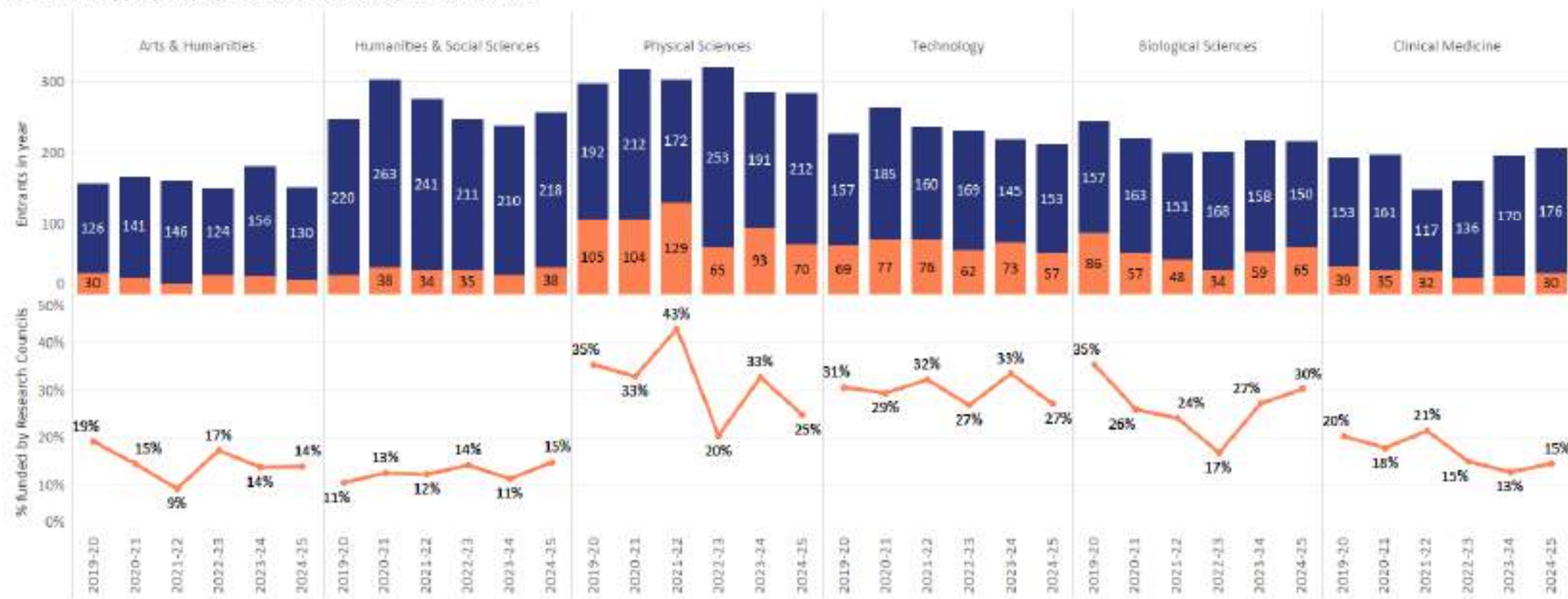
- Home
- Overseas

Note: We are only able to classify the last HEI attended for UK applicants and have therefore included a Fee Status filter for further information within this tab. We have excluded data about applicants who chose not to specify the last HEI they attended from the admissions rate visuals because bases are too small for analysis at a School level

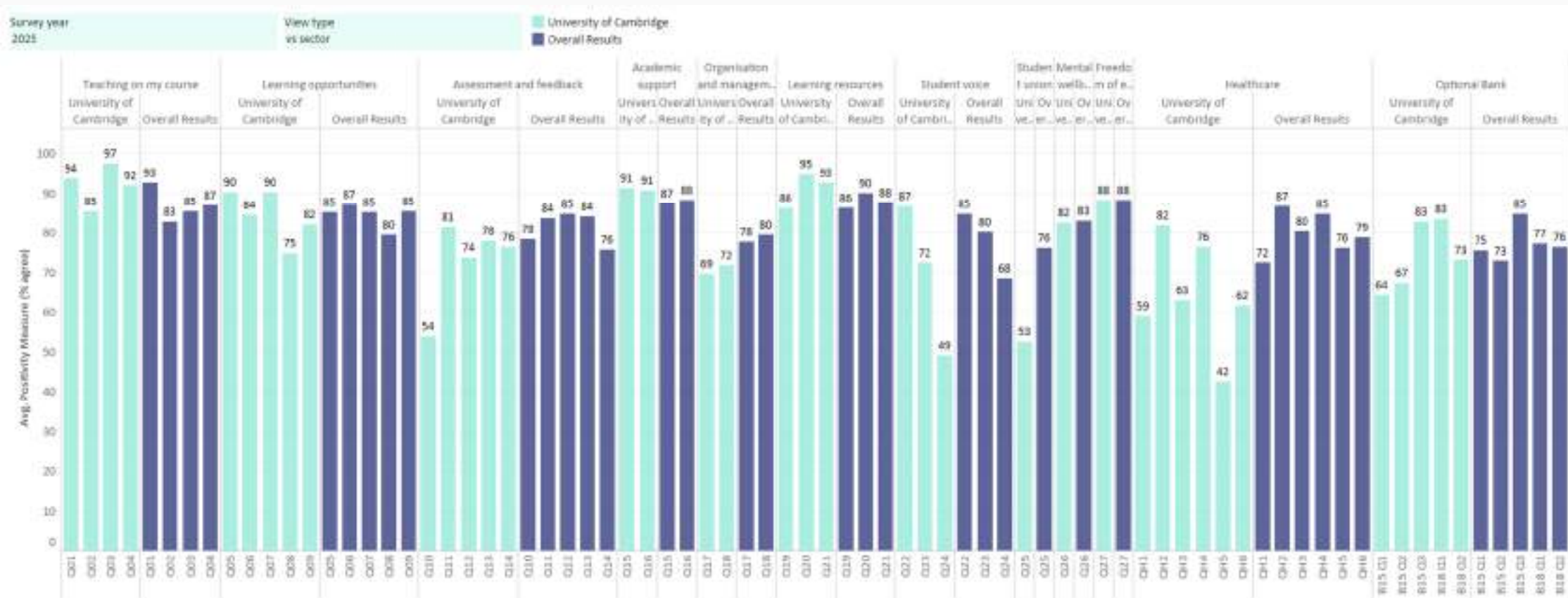
What proportion of PhD entrants are funded by Research Councils?

Research Council student
■ True ■ False

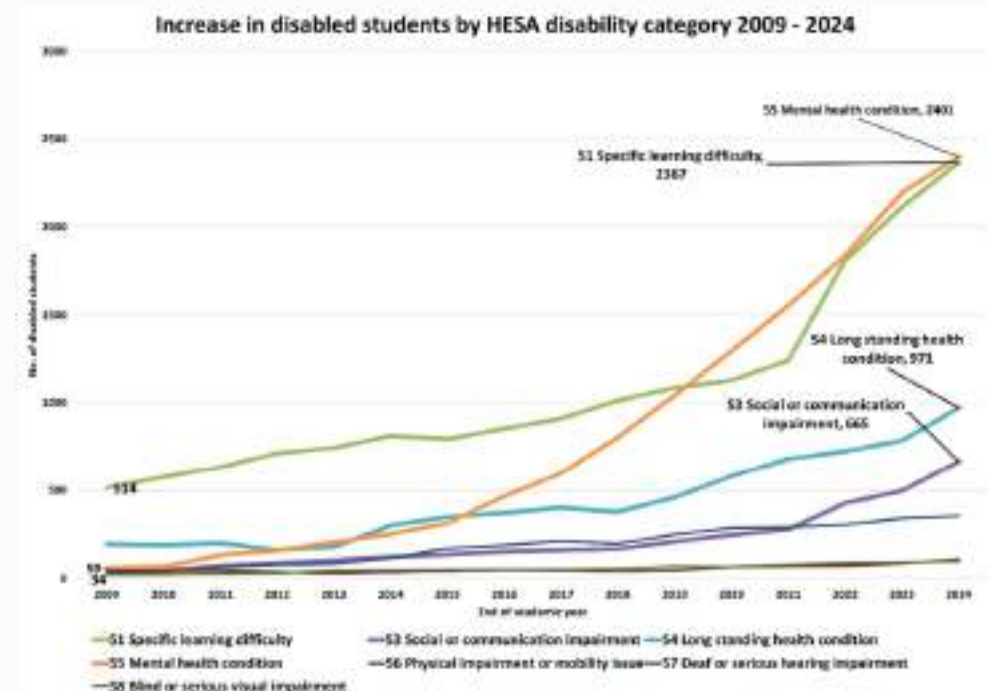
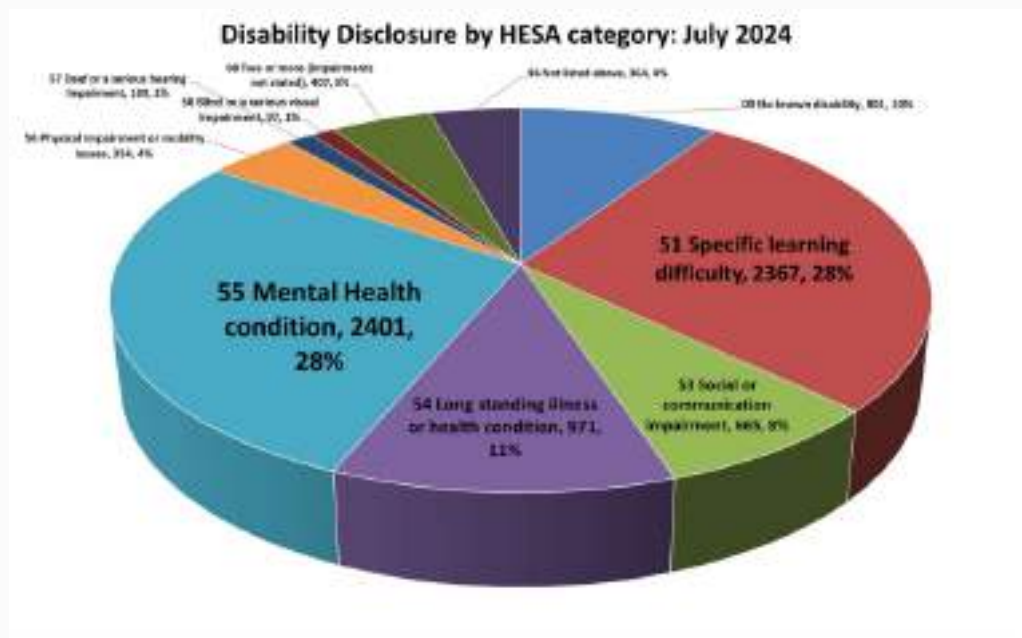
PhD entrants by year, and proportion who are funded by Research Councils



NSS 2025 – University Summary vs Sector % Agree (Positive Response)

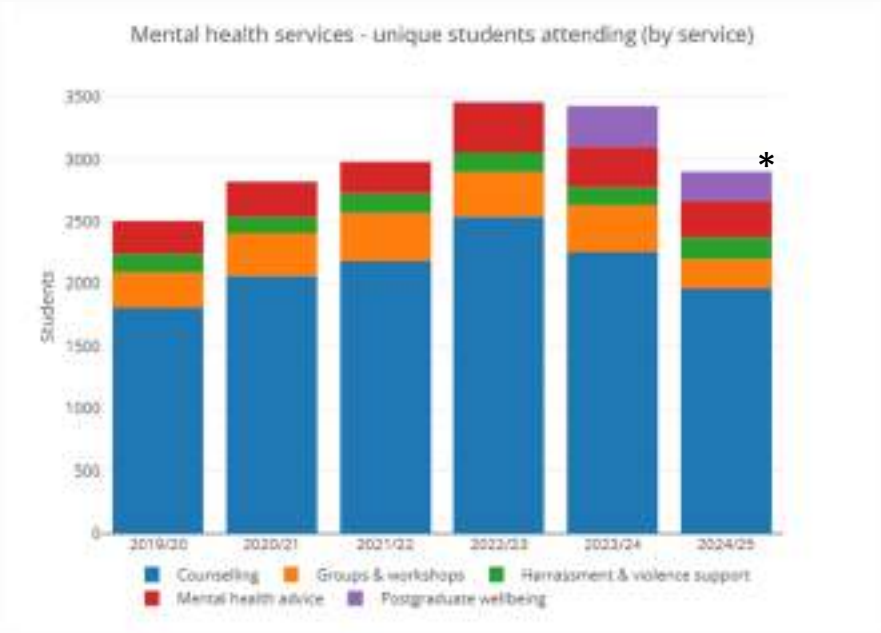
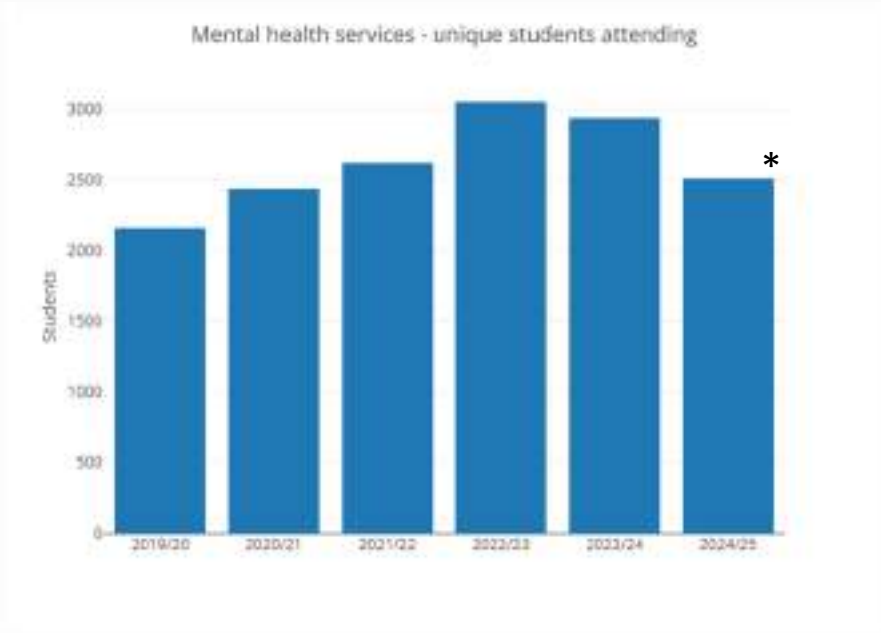


Disability disclosures: Breakdown category (snapshot and time series)



Source: ADRC Annual Report 2023/24

Mental Health service – unique students attending

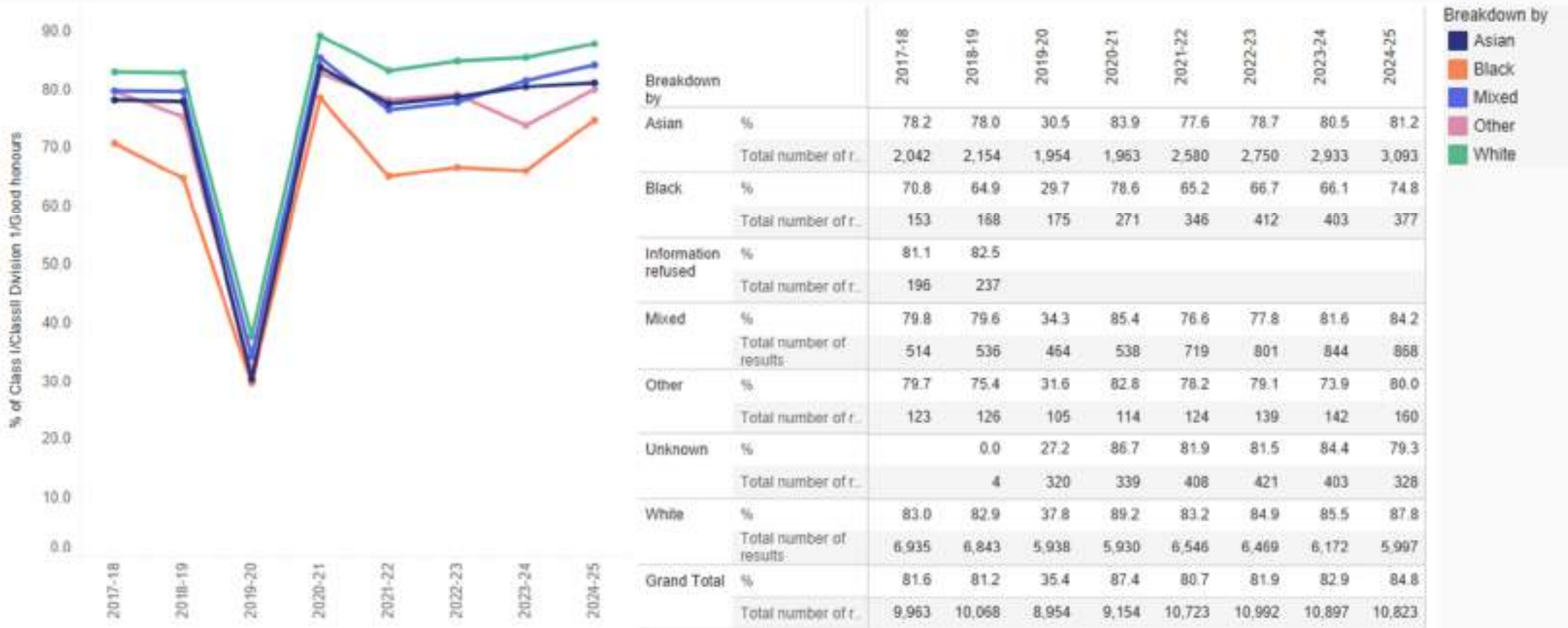


* 2024/25 data is incomplete, does not include September 2025

Student Outcomes, Undergraduate Examination Results – Good Honours awarding gaps by gender



Student Outcomes, Undergraduate Examination Results – Good Honours awarding gaps by ethnicity





Country of provider

England

Domicile

UK

Level of qualification

Undergraduate

Mode of former study

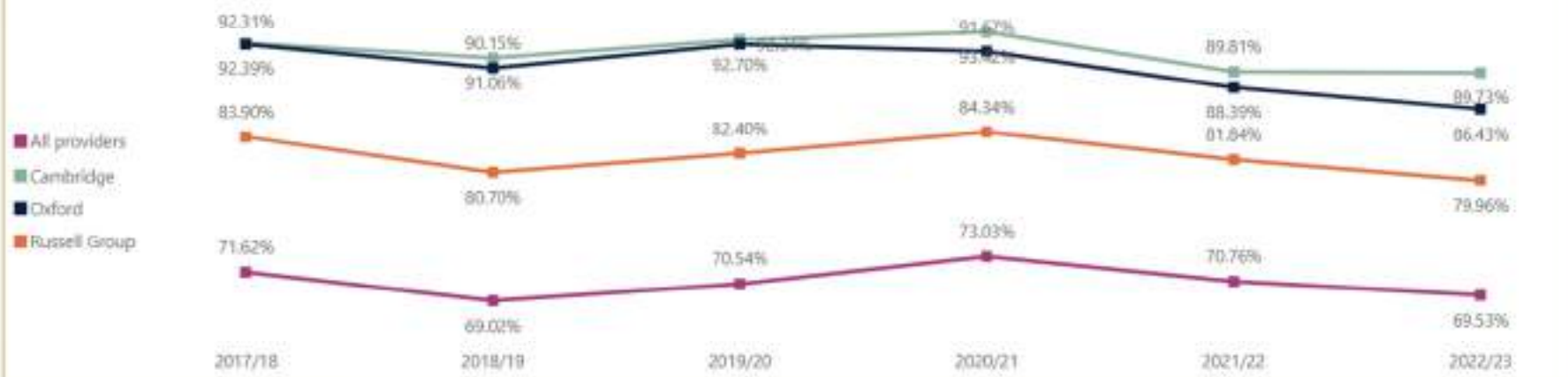
Full-time

Work type marker

Paid employment

(for these UK comparison pages, the filters on this page don't sync with any other pages)

Highly skilled work



'Highly skilled' work is considered to be any job within SOC major groups 1, 2 or 3 (Managers, directors and senior officials; Professional occupations; Associate professional occupations)

you can select/deselect groups via the side Filter panel >

Highly skilled work

Academic year Group	2017/18			2018/19			2019/20			2020/21			2021/22			2022/23		
	Count	All in work	%	Count	All in work	%	Count	All in work	%	Count	All in work	%	Count	All in work	%	Count	All in work	%
All providers	77,333	108,015	71.62%	72,580	105,160	69.02%	74,915	106,205	70.54%	79,535	108,900	73.03%	71,960	101,700	70.76%	44,905	93,345	69.53%
Cambridge	858	920	92.39%	815	895	91.08%	825	890	92.70%	710	760	93.42%	705	785	89.81%	655	730	89.73%
Oxford	726	780	92.31%	595	660	90.15%	690	715	92.31%	715	780	91.67%	685	775	88.39%	605	700	86.43%
Russell Group	21,835	28,090	83.90%	21,340	26,445	80.70%	21,895	28,570	82.40%	22,490	28,695	84.34%	19,715	24,090	81.84%	18,430	23,075	79.96%

Data from HESA Table J2 - Standard occupational classification of graduates entering work in the UK by provider



Country of provider

England

Domicile

UK

Level of qualification

Postgraduate

Mode of former study

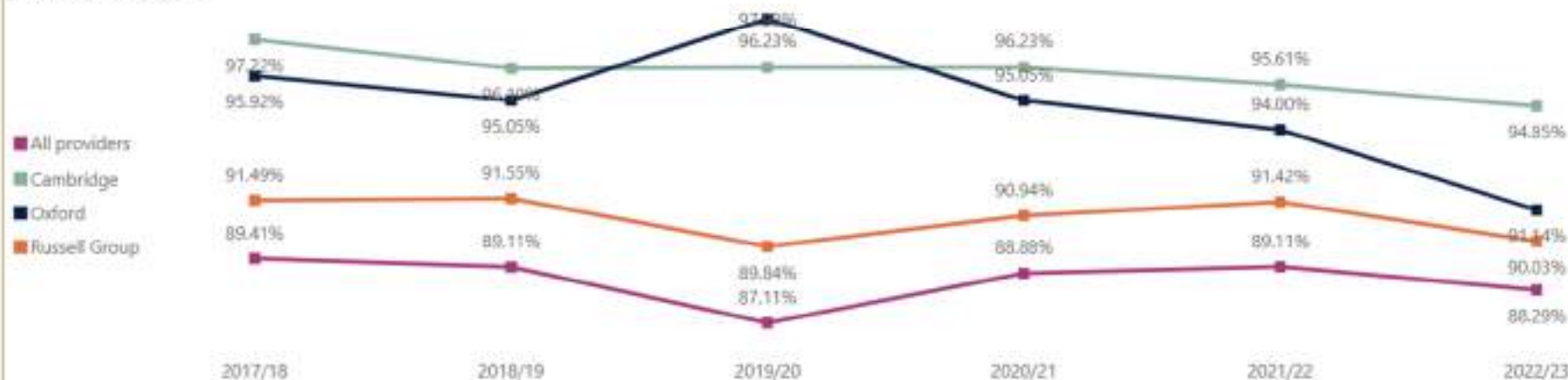
Full-time

Work type marker

Paid employment

(for these UK comparison pages, the filters on this page don't sync with any other pages)

Highly skilled work



Highly skilled work is considered to be any job within SOC major groups 1, 2 or 3 (Managers, directors and senior officials; Professional occupations; Associate professional occupations)

you can select/deselect groups via the side Filter panel >

Highly skilled work

Academic year	2017/18			2018/19			2019/20			2020/21			2021/22			2022/23		
	Group	Count	All in work %	Count	All in work %	Count	All in work %	Count	All in work %	Count	All in work %	Count	All in work %	Count	All in work %			
All providers	26,385	29,510	89.41%	28,220	31,670	89.11%	27,415	31,470	87.11%	29,880	33,620	88.88%	34,380	38,580	89.11%	26,870	30,435	88.29%
Cambridge	525	540	97.22%	505	525	96.10%	510	530	96.23%	510	530	96.23%	545	570	95.61%	460	485	94.85%
Oxford	470	490	95.92%	480	505	95.05%	485	495	97.98%	480	505	95.05%	470	500	94.00%	360	395	91.14%
Russell Group	9,885	10,805	91.49%	10,995	12,010	91.55%	10,915	12,150	89.84%	10,690	11,755	90.94%	12,840	14,045	91.42%	10,335	11,480	90.03%

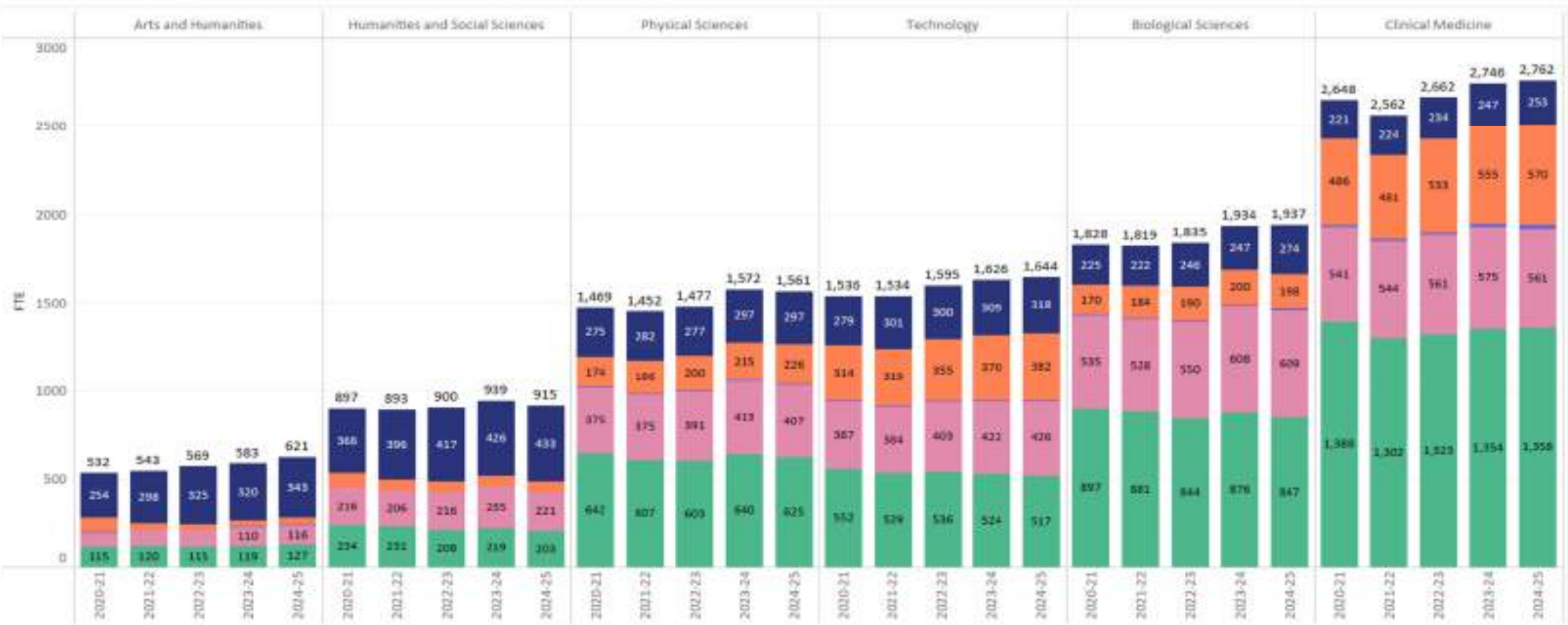
Data from HESA Table 22 - Standard occupational classification of graduates entering work in the UK by provider

Section 3 (Staff): How many staff are employed in the University of Cambridge?

- The numbers represent FTE of staff as at 31 July of each academic year and include all sources of funds.
- The underlying data is sourced from the University's HR records system (CHRIS).
- Staff FTE represents the total workforce capacity in terms of full-time roles. It standardises staffing levels by converting part-time and variable-hour roles into full-time equivalents, enabling consistent comparisons across teams, departments, and time periods.
- A staff member is any academic or non-academic employee for whom one or more contracts of employment exist between the University of Cambridge and the individual and/or the University, if liable to pay Class 1 National Insurance contributions for that individual. Individuals who have contracts of employment with one of the Cambridge Colleges but not the University are not included.

Staff: FTE by position type for Schools

Position type
 Academic Academic Related Apprentice Assistant Researcher

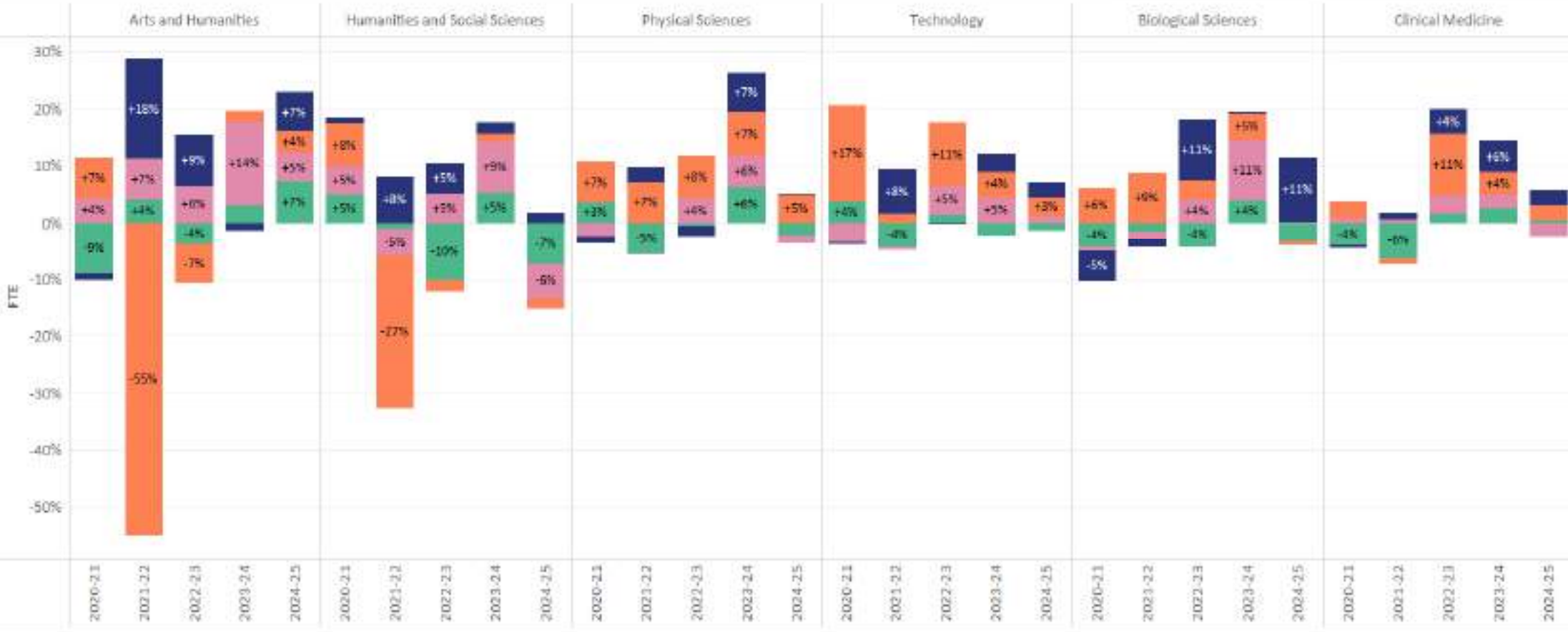


Staff FTE: annual percentage change for Schools

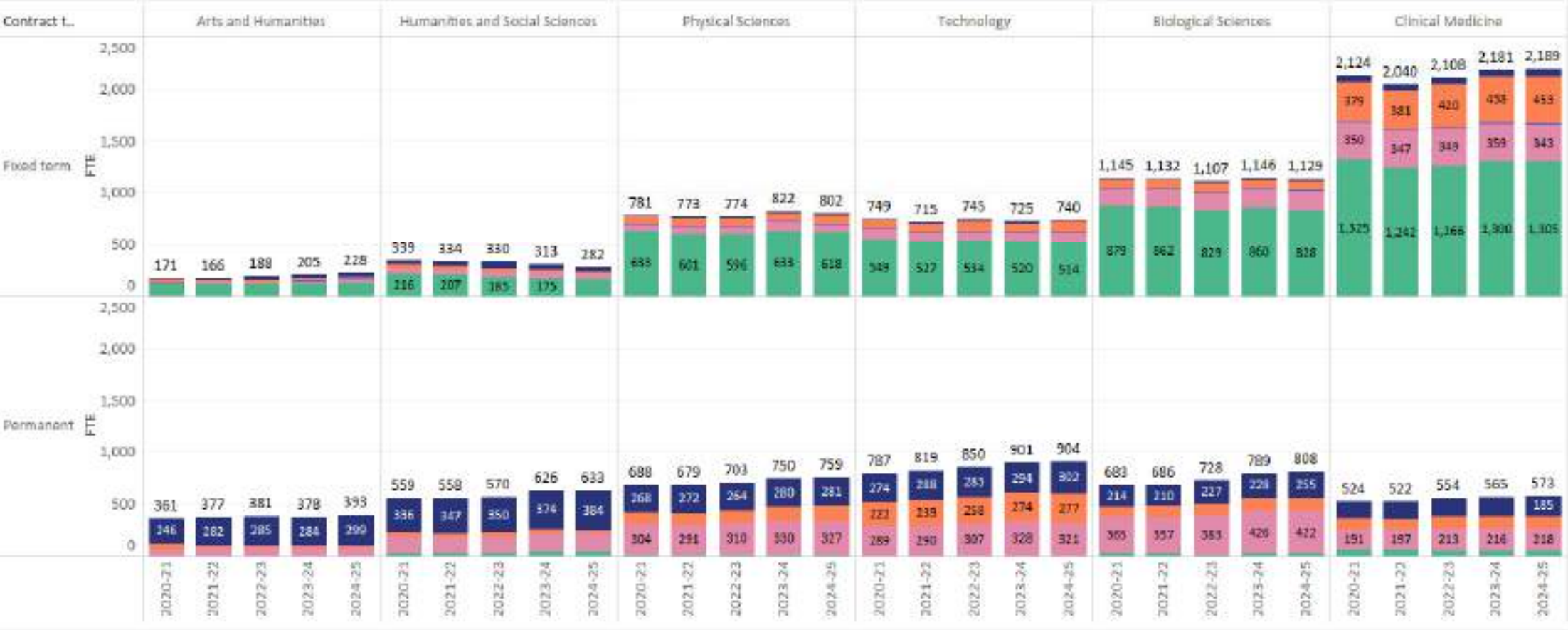


Position type
■ Academic (Research and Teaching)
 ■ Academic Related
 ■ Assistant
 ■ Researcher

Position types with fewer than 300 staff across displayed institutions have been excluded because the small staff numbers per institution can result in very large positive or negative annual percentage change.



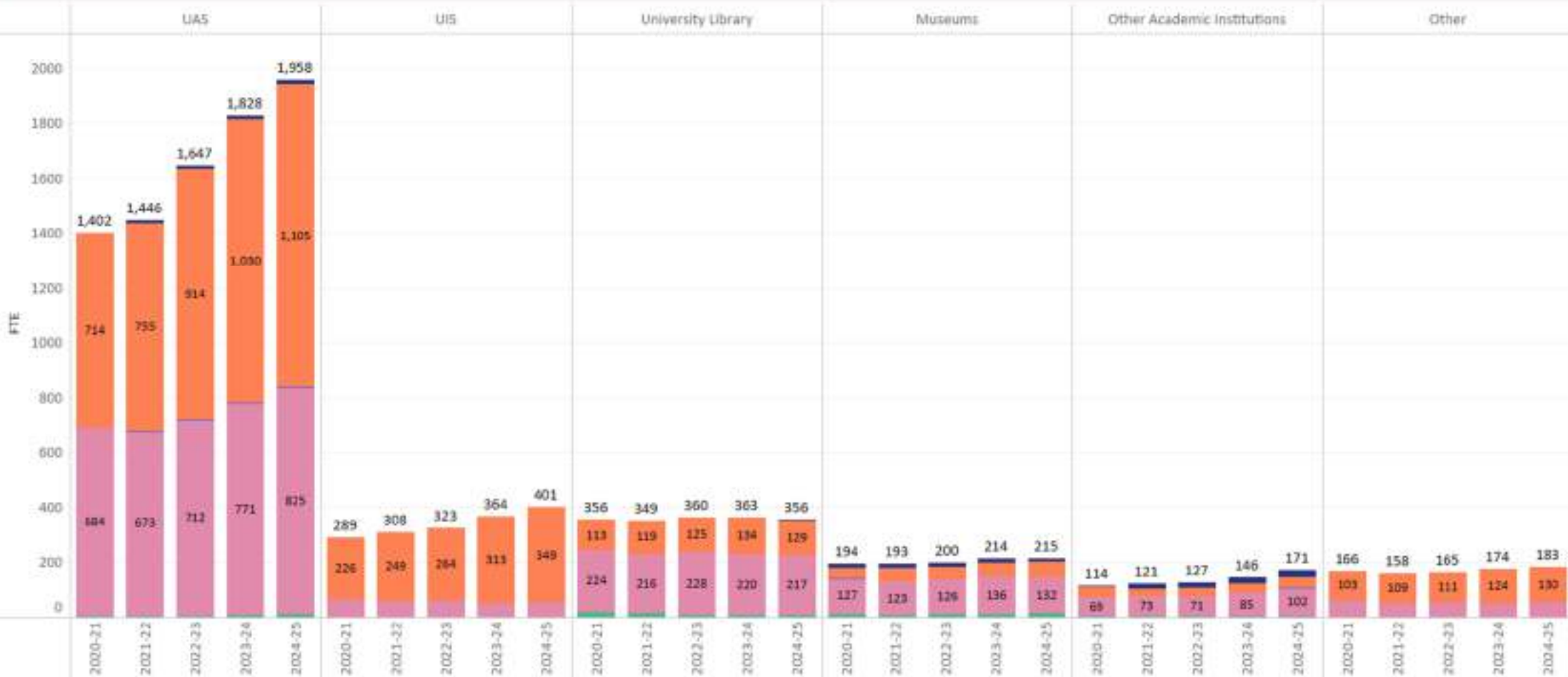
Staff: FTE by position type and contract type for Schools



Staff: FTE by position type for Non-School institutions



Position type
 Academic (Dark Blue), Academic Related (Orange), Apprentice (Light Blue), Assistant (Pink), Researcher (Green)



Staff FTE: annual percentage change for Non-School institutions

Position type
■ Academic Related
■ Assistant

Position types with fewer than 100 staff across displayed institutions have been excluded because the small staff numbers per institution can result in very large positive or negative annual percentage change.



Academic category breakdown

At the University of Cambridge, academic staff categories are defined primarily by their roles in research and/or teaching. This includes temporary academic staff covering long-term leave, such as research or maternity leave.

They fall into two main subcategories:

1. Academic (Research and Teaching)

These roles involve both research and teaching responsibilities. Titles and grades include:

- Grade 12: Professor
- Grade 11: Professor (Grade 11)
- Grade 10: University Associate Professor
- Grade 9: University Assistant Professor (pre- and post-probation)

Unestablished staff hold equivalent titles such as:

- Associate Professor
- Assistant Professor

2. Academic (Teaching and Scholarship)

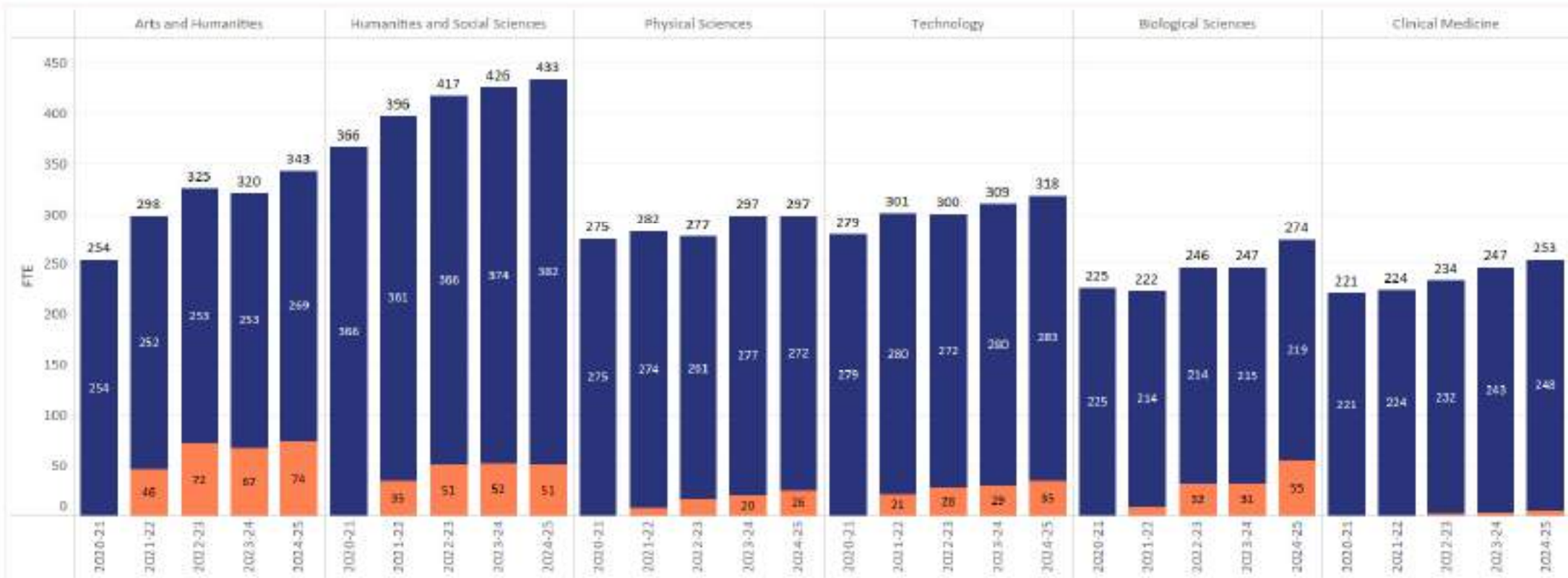
These roles focus primarily on teaching. Titles include:

- Grade 12: Teaching Professor
- Grade 11: Teaching Professor (Grade 11)
- Grade 10: Associate Teaching Professor
- Grade 9: Assistant Teaching Professor
- Grade 8: Senior Teaching Associate
- Grades 6 and 7: Teaching Associate

These roles may be held by established or unestablished staff, with title changes depending on probation and service duration.

Staff FTE: academic category breakdown

Position type
■ Academic (Research and Teaching) ■ Academic (Teaching and Scholarship)

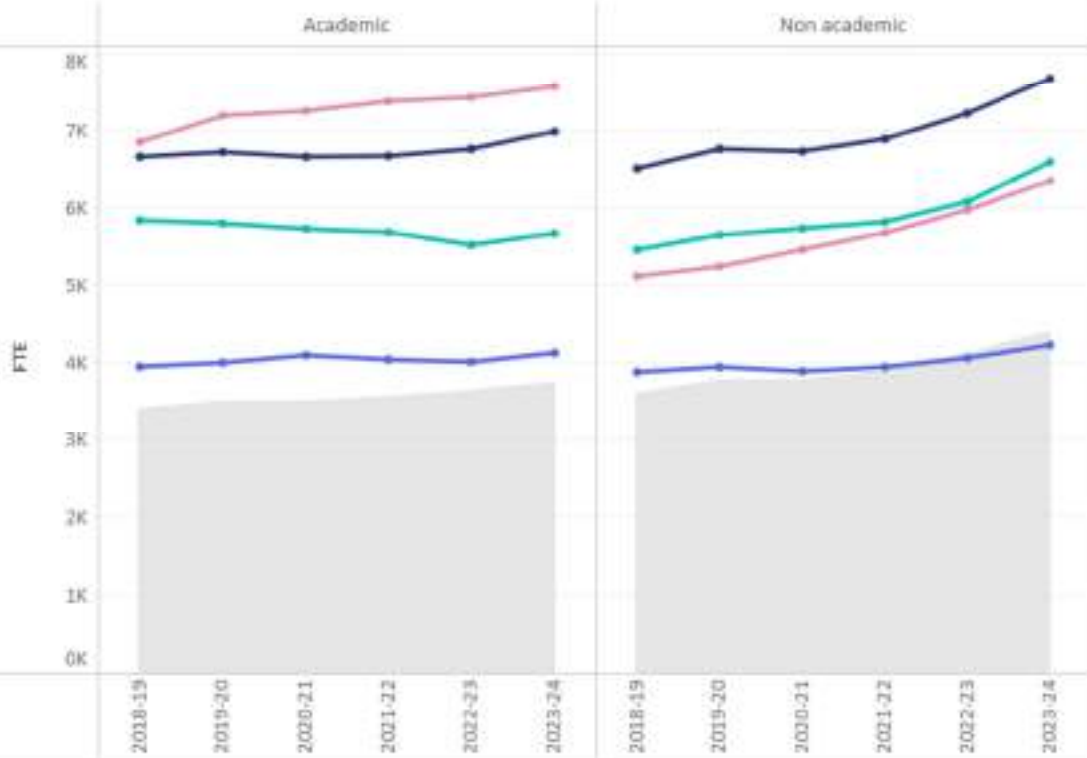


Staff: How does Cambridge compare to other Russell Group institutions?



■ Academic
■ Non academic

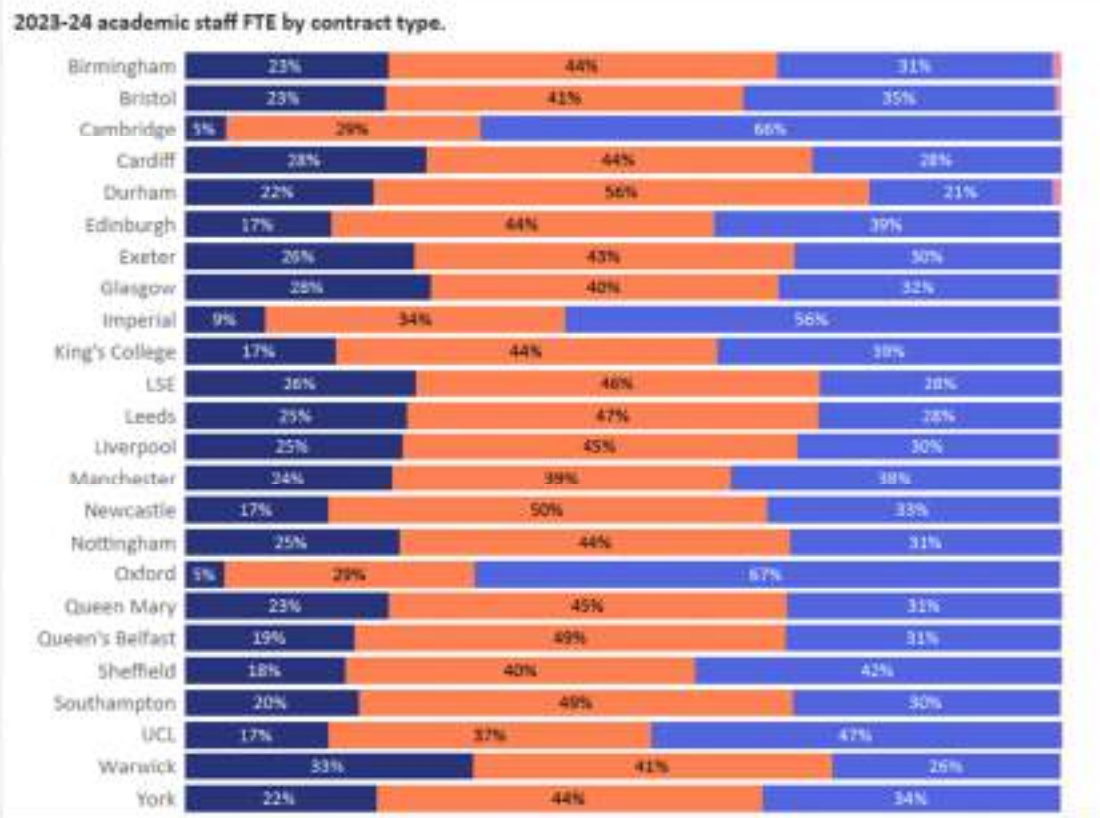
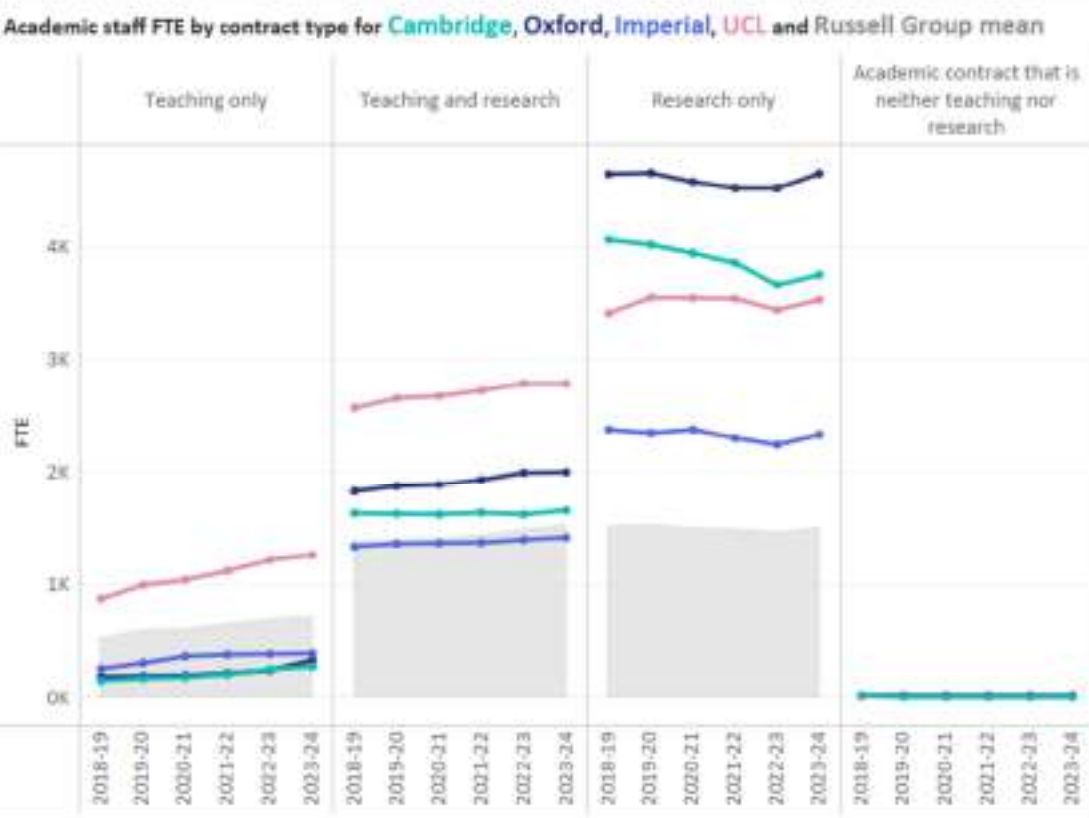
Academic vs non-academic staff FTE for Cambridge, Oxford, Imperial, UCL and Russell Group mean



2023-24 staff FTE by Russell Group university



Staff: How does Cambridge compare to other Russell Group institutions?



https://tableau.blue.cam.ac.uk/#/site/InformationHub/views/StaffDashboard_16842377916870/RussellGroupcomparison

Section 4 (Research): What is the research market share and key funder types of the University of Cambridge compared to the Russell Group?

- The numbers tracks research grants and contracts income over six academic years for Cambridge and other Russell Group universities, as submitted by the universities in the Annual Financial Return (AFR), Table 5.
- Capital grants, such as Cambridge's EPSRC funding for the Ray Dolby Centre, are included in research income (notably in 2018-19 and 2019-20).
- Other Russell Group institutions also report capital grants as research income as per the requirements of the AFR.
- Research income is categorised by HESA cost centres, which classify activity by academic subject.
- For analysis, these cost centres are grouped into broader research areas in the dashboard following HESA groupings.

HESA cost centres groupings

Cost centres are the way HESA codes higher education activities to allow like-for-like comparisons between multiple providers and cross-functional metrics like student/staff ratios. Full list is available here: [HESA cost centre groups](#)

Biological, mathematical & physical sciences

- 111 Earth, marine & environmental sciences
- 112 Biosciences
- 113 Chemistry
- 114 Physics
- 122 Mathematics

Engineering & technology

- 115 General engineering
- 116 Chemical engineering
- 117 Mineral, metallurgy & materials engineering
- 118 Civil engineering
- 119 Electrical, electronic & computer engineering
- 120 Mechanical, aero & production engineering
- 121 IT, systems sciences & computer software engineering

Medicine, dentistry & health

- 101 Clinical medicine
- 102 Clinical dentistry
- 103 Nursing & allied health professions
- 104 Psychology & behavioural sciences
- 105 Health & community studies
- 106 Anatomy & physiology
- 107 Pharmacy & pharmacology

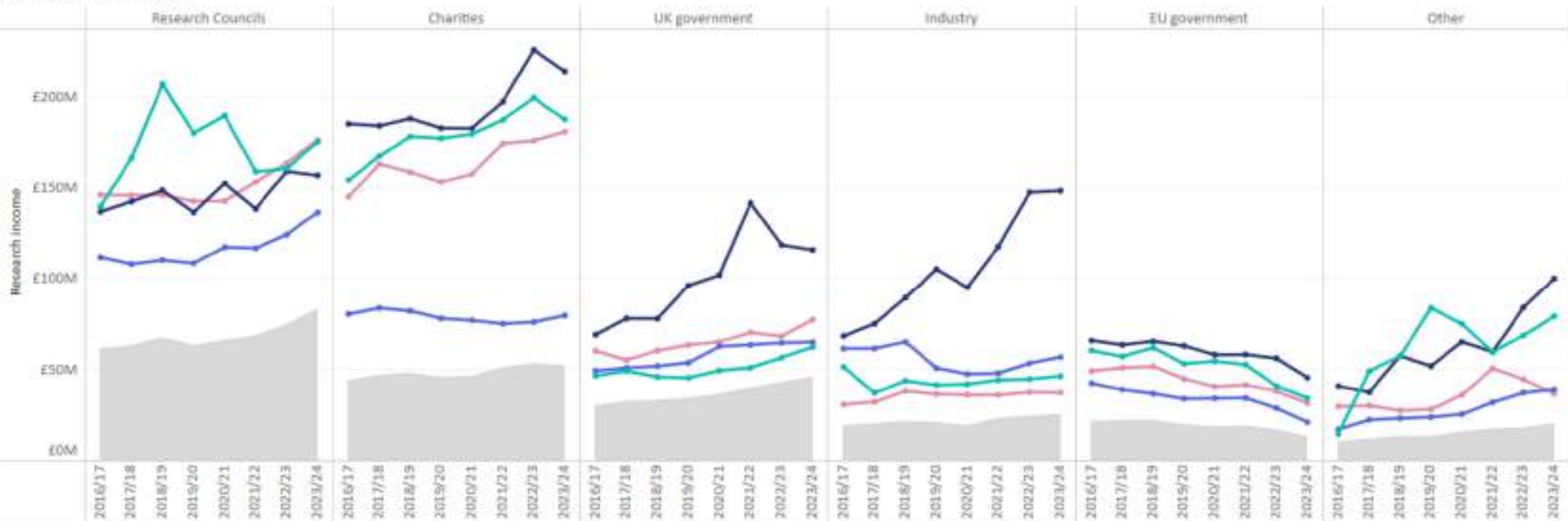
Other

- Remaining cost centres

How does the mix of research funders at Cambridge compare to other Russell Group institutions?



Research income (£M) by funder category
Research subject area: All

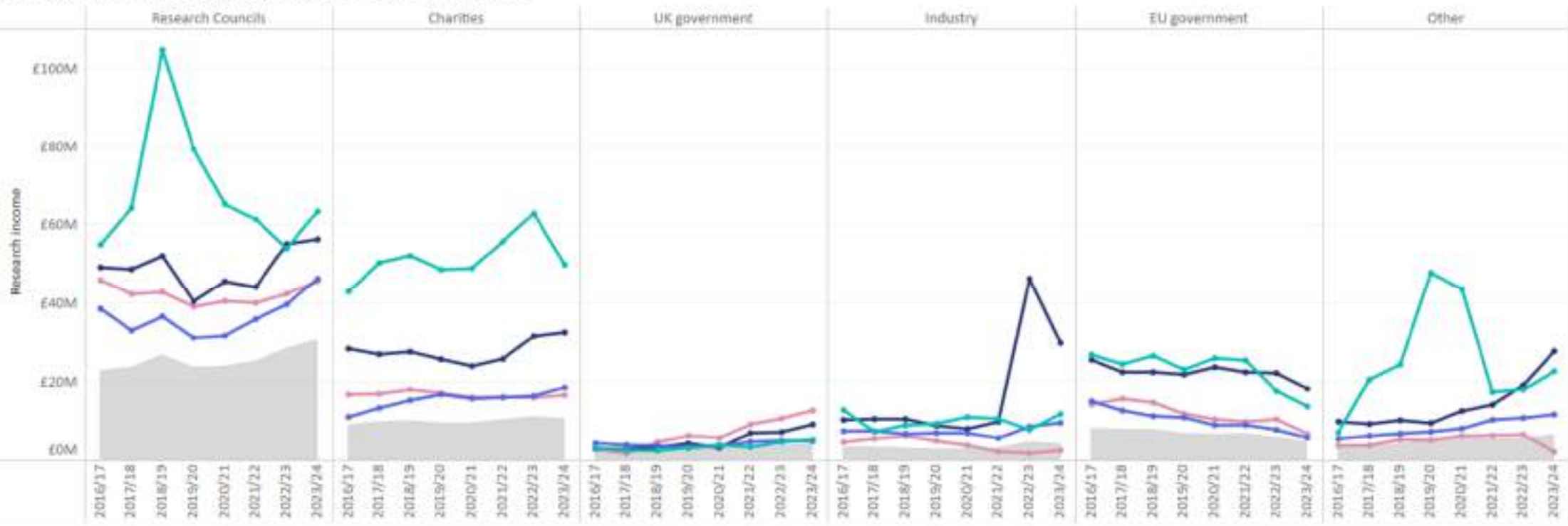


<https://tableau.blue.cam.ac.uk/#/site/InformationHub/views/RussellGroupresearchincome/Fundermix>

How does the mix of research funders at Cambridge compare to other Russell Group institutions?



Research income (£M) by funder category
 Research subject area: Biological, mathematical & physical sciences

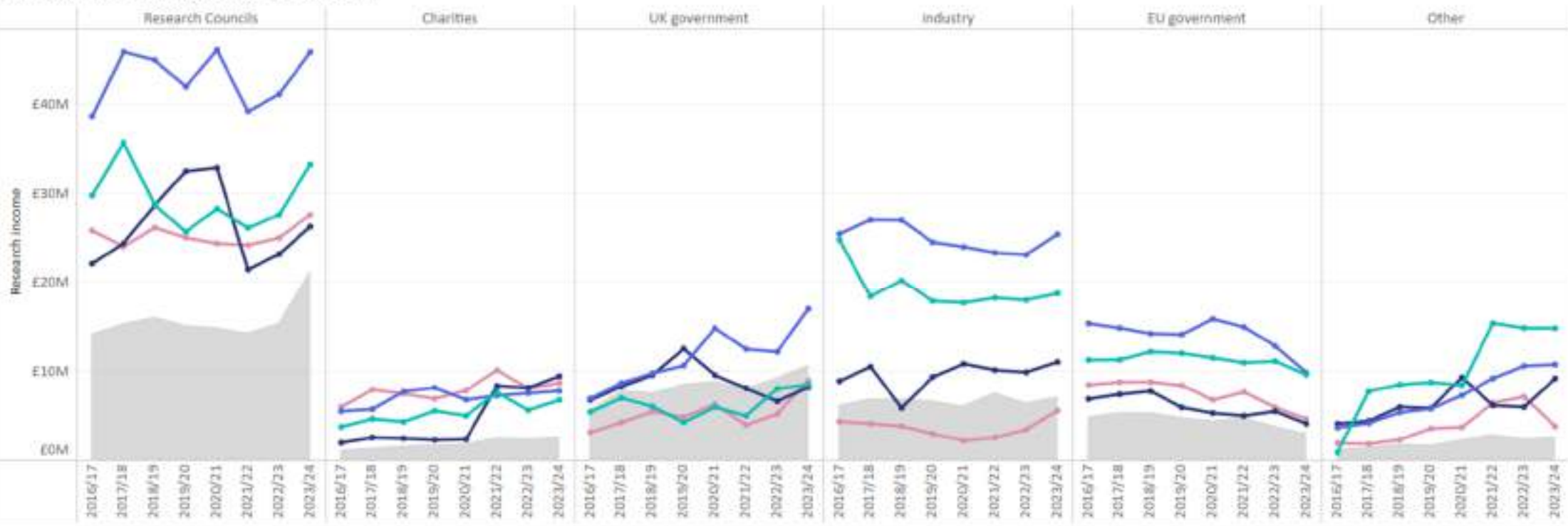


<https://tableau.blue.cam.ac.uk/#/site/InformationHub/views/RussellGroupresearchincome/Fundermix>

How does the mix of research funders at Cambridge compare to other Russell Group institutions?



Research income (£M) by funder category
 Research subject area: Engineering & technology

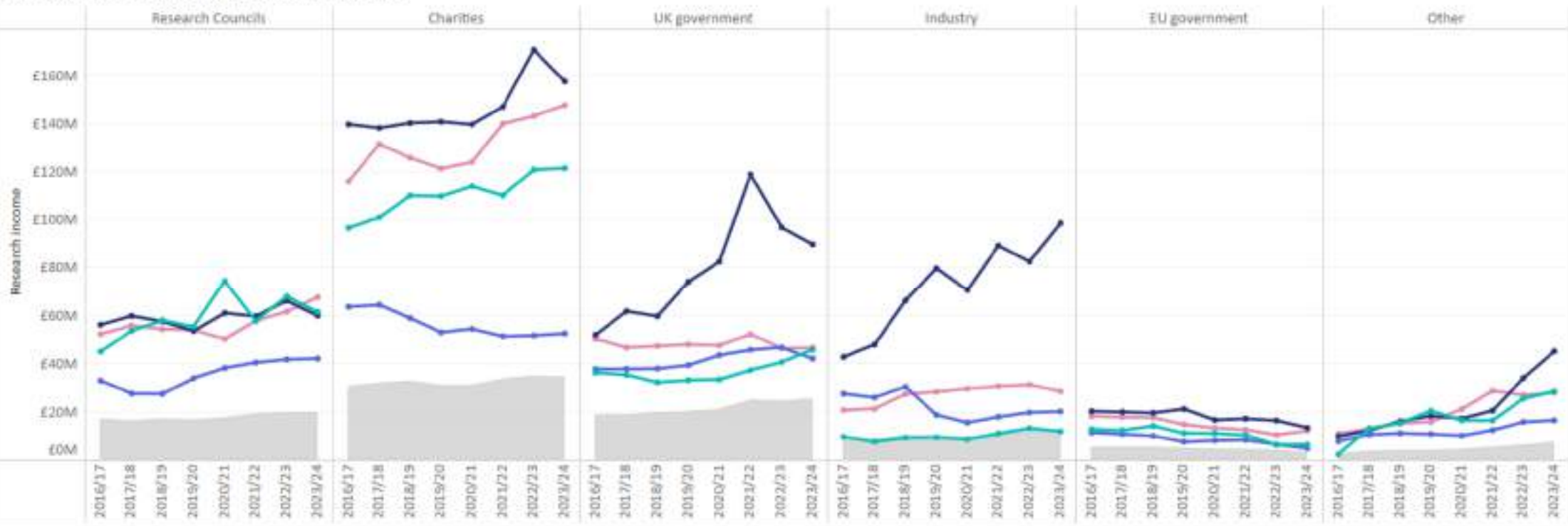


<https://tableau.blue.cam.ac.uk/#/site/InformationHub/views/RussellGroupresearchincome/Fundermix>

How does the mix of research funders at Cambridge compare to other Russell Group institutions?



Research income (£M) by funder category
 Research subject area: Medicine, dentistry & health

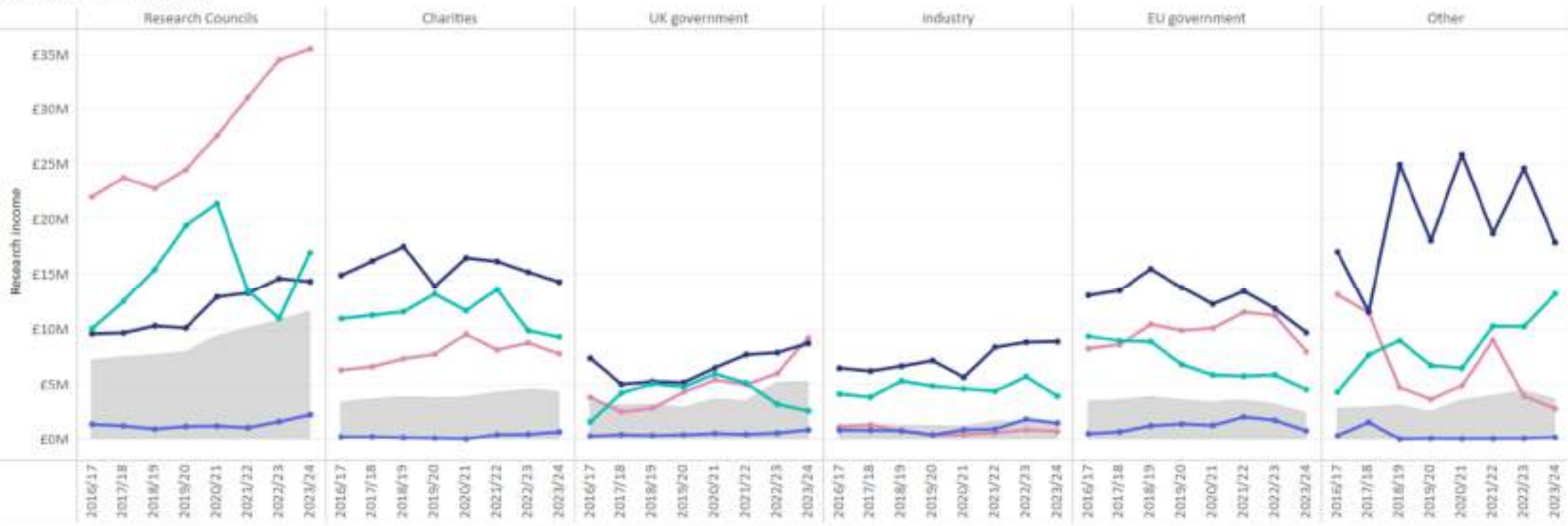


<https://tableau.blue.cam.ac.uk/#/site/InformationHub/views/RussellGroupresearchincome/Fundermix>

How does the mix of research funders at Cambridge compare to other Russell Group institutions?



Research income (£M) by funder category
Research subject area: Other



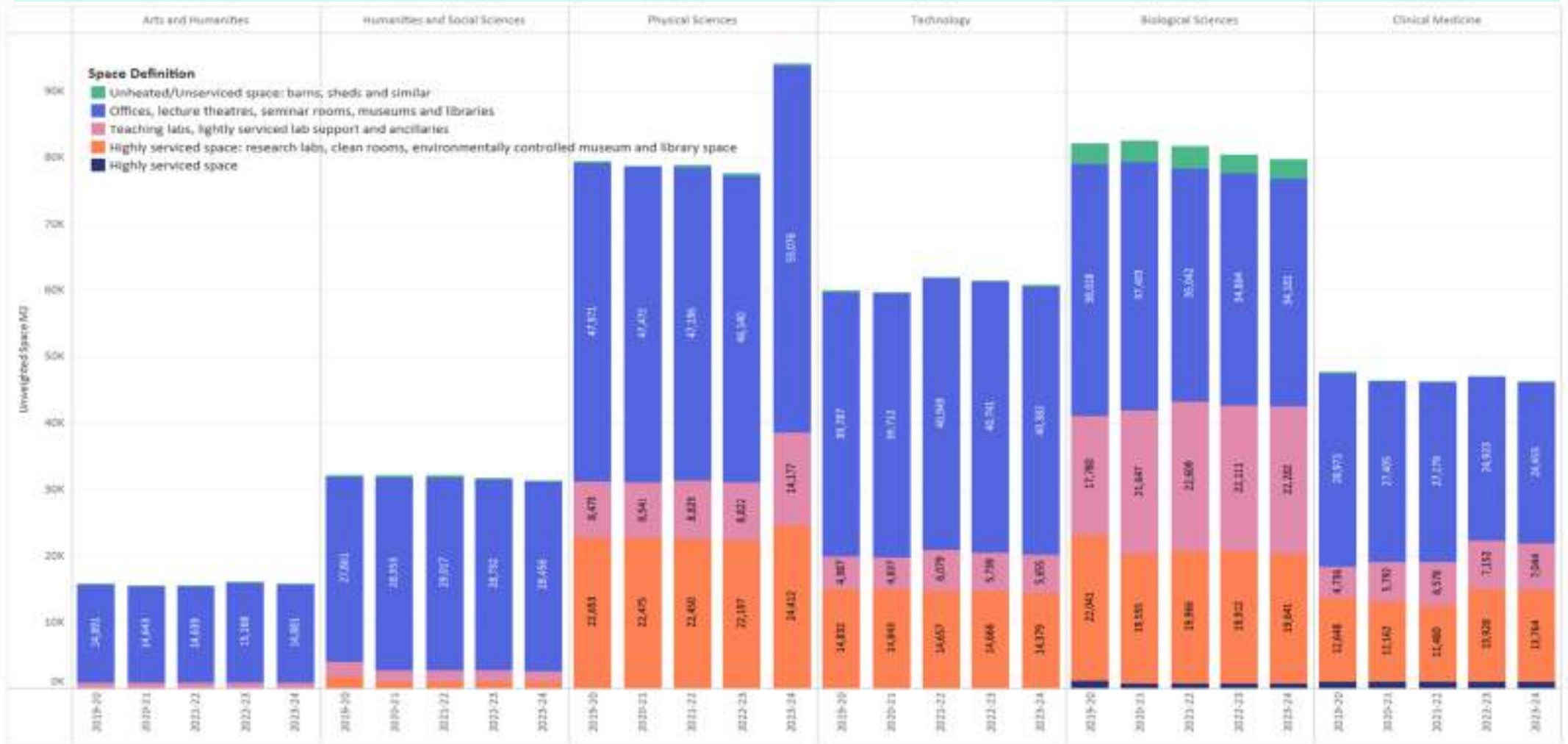
<https://tableau.blue.cam.ac.uk/#/site/InformationHub/views/RussellGroupresearchincome/Fundermix>

Section 5 (Space): How is the space distributed in the University of Cambridge?

- These numbers represent the Net Assignable Area (NAA) in square metres (m²) by School. The underlying data is sourced from the Estates MICAD report.
- NAA measures represent functional space available for occupants or uses (offices, laboratories, lecture rooms) but excludes non-assignable areas such as halls, staircases, lavatories and atria unless such space is assigned.
- The data presented encompasses the new Royal Dolby Centre, as well as the buildings scheduled for future decommissioning within the Physics department.
- Space categories are as used in the Transparent Approach to Costing (TRAC) model as follows:

space category	Description
1	Unheated/Unserviced space: barns, sheds and similar
2	Offices, lecture theatres, seminar rooms, museums and libraries
3	Teaching labs, lightly serviced lab support and ancillaries
4	Highly serviced space: research labs, clean rooms, environmentally controlled museum and library space
5	Highly serviced space

How is the space distributed in the University of Cambridge?



Space benchmarking

- This data shows the Gross Internal Area (GIA) of the non-residential estate returned as part of the HESA Estates Management Record (EMR) and differs from the previous slide that shows Net Assigned Area (NAA) for the University of Cambridge only.
- The unit of measurement is square metre (m²), and the definition of GIA is the total area of buildings owned, occupied (meaning that there is staff presence) or maintained by the HE provider, measured to the internal face of the perimeter walls at each floor level.
- Commercial space that can be separately identified as a discrete area, together with all associated costs, for example, energy, waste and emissions, is excluded.

Non-residential gross internal area (m2)



Section 6 (finance): What are Schools' direct income and expenditure?

- The data is based on EFT prototype generated in OneStream system, and, therefore, does not directly reconcile back to current financial system (CUFS).
- The EFT Prototype aims to provide indicative figures for the agreed transition from a funds-based accounting methodology (Chest accounting) to income and expenditure accounting. This means future income and expenditure will be aligned to the institutions and activities which earn the income and disburse the expenditure.
- Within the Schools gross contribution, shown on the following slides, is the following:
 - Income includes each School's direct income, including attributed income which has previously been received into the Chest, such as tuition fee income and quality related-research funding (QR) income. Other income covers a wide range of items such as health and hospital authorities' income and rental income.
 - Expenditure includes each School's direct expenditure, such as staff appointed within the School and direct expenditure on research grants. In the EFT prototype, direct expenditure also includes an attribution of selected above-the-line indirect costs, the majority of which relate to utilities and servicing our estate. School income less direct expenditure results in **gross contribution, which is normally a surplus.**
- A fuller presentation of the EFT prototype would include income and expenditure for the non-School institutions. Many, of the non-School institutions, such as the UAS the UIS, the University Libraries and CUDAR, are attributed as indirect costs within the Schools net contribution, which hasn't been shown in the following slides. Once indirect costs are attributed, School income, less direct and indirect expenditure results in **net contribution, which is often a deficit.**

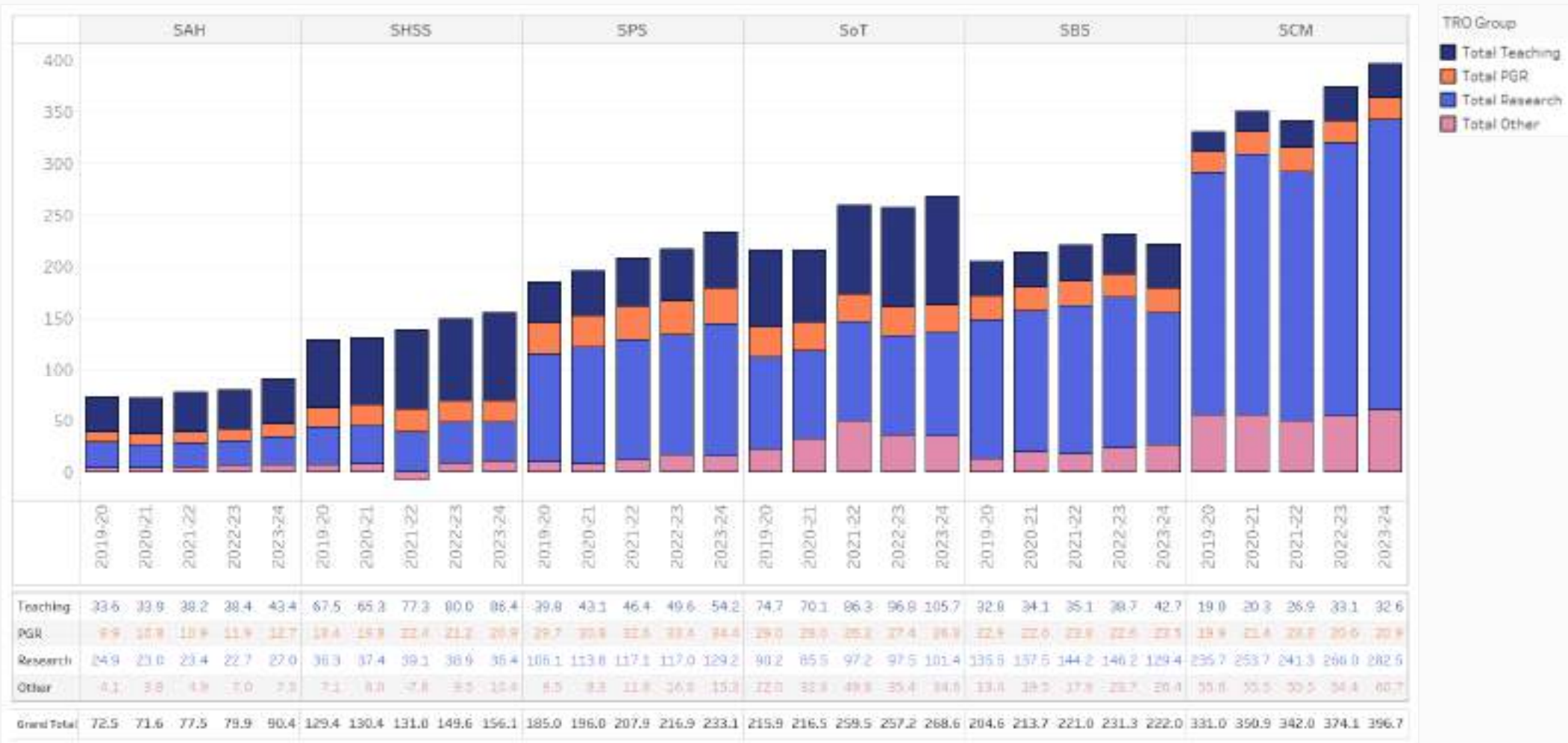
Section 6 (finance): What are Schools' direct income and expenditure?

Details to further note within income and expenditure analysis:

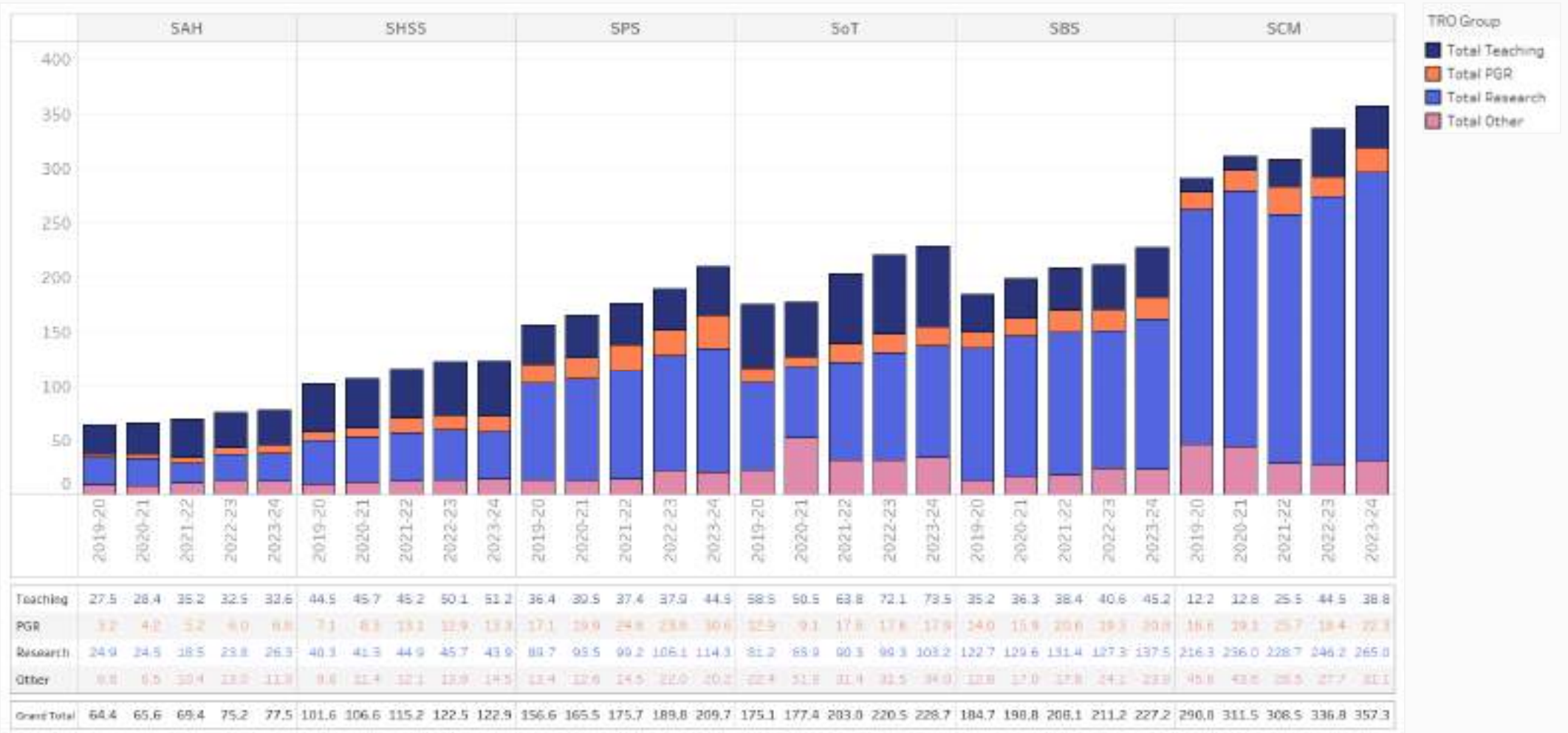
- In 2021-22 the El-Erian Trust Fund for Economics was transferred from Department of Politics and International Studies (SHSS) to the Judge Business School (ST). This £17m transfer was posted using an income code, which has resulted in:
 1. Other income in SHSS in 2021-22 to be understated by £17m, bringing about the £(8)m negative balance.
 2. Other income in ST in 2021-22 to be overstated by £17m.

This anomaly is due to the way financial transactions are currently represented in CUFS. In the future finance system, these types of financial transfer will not affect departmental income and expenditure and is a good example of why EFT prototype data is for information only at this stage.

Income by School and activity (Teaching, PGR, Research and Other), 2019-20 to 2023-24 (£m)



Expenditure by School and activity (Teaching, PGR, Research and Other), 2019-20 to 2023-24 (£m)



Gross Contribution (income minus expenditure) by School and activity (Teaching, PGR, Research and Other), 2019-20 to 2023-24 (£m)





League Table definitions

- **League Table** is a ranked list of Universities which compares their performance, based on unique methodologies that employ a number of quantitative measures.
- University guides is a term that describes the national/domestic league tables
- University rankings is a term that describes the international league tables
- Each league table has its own release schedule, but early autumn is popular, with releases usually dated for the next calendar year (i.e. 2025 releases will be dated 2026).
- Where national data is used (e.g. HESA, NSS) data will often lag behind by several years, e.g. The Guardian 2025-dated release used HESA 2021-22 data.



Section 7: Domestic League Tables

UK-wide league tables compare c.120 British universities:

- **Complete University Guide (CUG)** – updates in June
- **The Guardian University Guide** – updates in early-mid September
- **The Times and Sunday Times Good University Guide** – updates in late September

All national rankings supplement the overall tables with a host of subject specific tables.

In 2023 The Daily Mail launched its own rankings table, which sits behind a paywall. We do not currently offer analysis on this table.

Methodology Summary – Domestic League Tables

The Times and CUG have very similar methodologies:

- Normalise data using z-scores
- Calculate an overall score, and adjust scores for subject mix
- Use a lot of the same indicators: NSS, Research Quality, student/staff ratio (SSR), Entry Tariff, Good Honours, Graduate Prospects
- CUG uses Completion, whereas The Times uses Continuation; The Times also recently added a sustainability measure, using the People & Planet rankings, and no longer has a metric focusing on Academic/Services Spend

Guardian differs from other national tables in a number of ways:

- Calculates individual subject ranking as the focus, and then builds overall score from these, with a greater proportion of the overall score weighted to subjects with a greater population of students
- Uses standard deviations rather than z-scores for normalisation
- Relies more heavily on NSS results, and does not have a Research metric
- Includes Value-Added metric

Ranking Summary – Domestic Tables

UK rankings	2019	2020	2021	2022	2023	2024	2025	2026
The Guardian	1	1	3	2	3	3	3	3
Complete University Guide	1	1	1	2	2	1	1	1
The Times & Sunday Times	1	1	1	3	3	3	4	

Guardian University Guide 2026 Summary

For further information and methodology see: [Guardian University Guide on the tableau server](#)

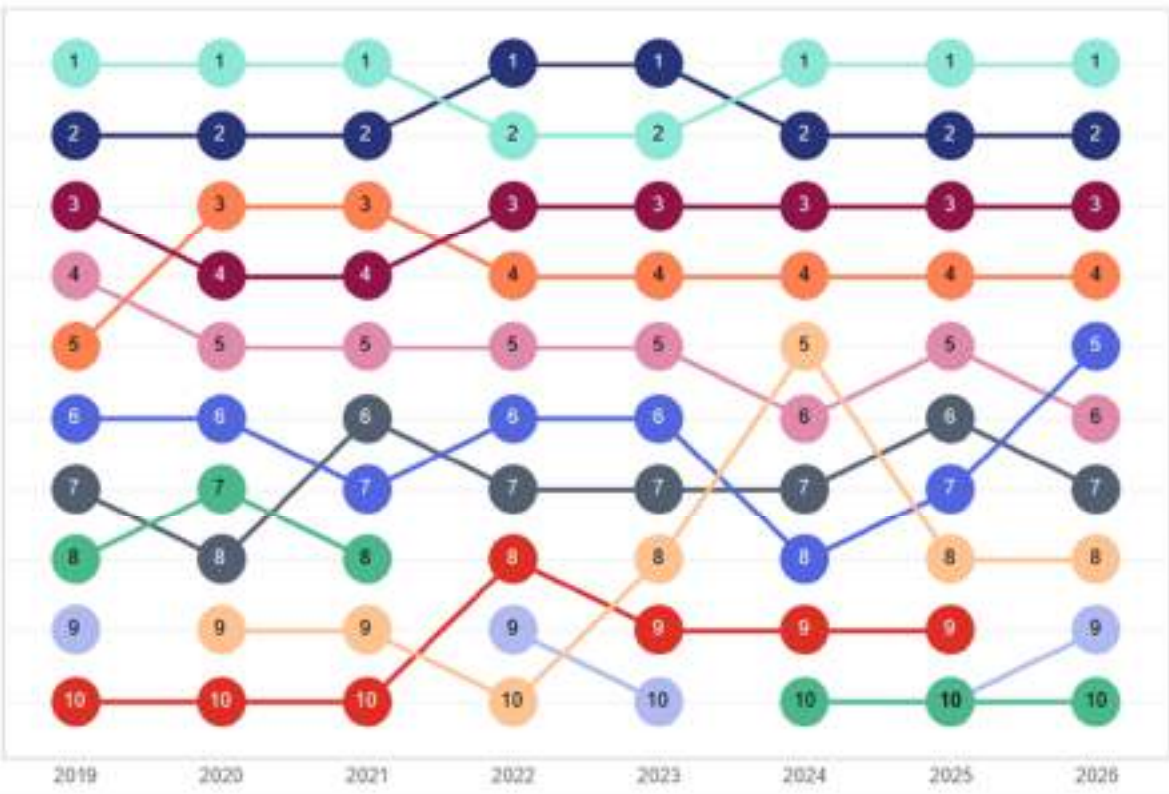


Institution	2024		2025		2026	
	Avg. Rank number	Value	Avg. Rank number	Value	Avg. Rank number	Value
Oxford	2	96.50	1	100.00	1	100.00
St Andrews	1	100.00	2	98.60	2	98.30
Cambridge	3	94.80	3	94.50	3	94.70
London School of Economics	4	89.70	4	88.10	4	93.80
Imperial College	5	82.20	5	82.60	5	82.80
Durham	7	81.20	6	80.80	6	85.40
Bath	6	81.40	7	79.50	7	75.90
Warwick	9	76.70	8	75.20	8	79.00
UCL	8	77.40	9	74.80	9	73.40
Loughborough	10	75.60	10	74.60	10	73.10



Complete University Guide 2026 Summary

For further information and methodology see: [Complete University Guide on the tableau server](#)

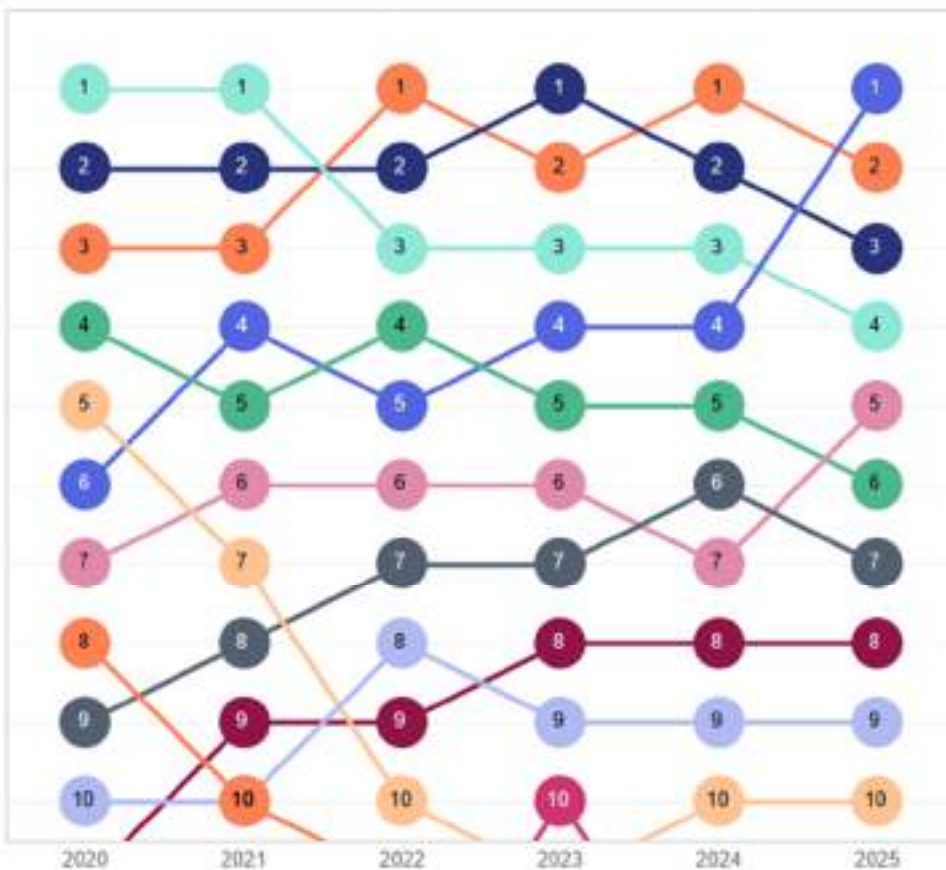


University Name	2025	2026
	Avg. Value	Avg. Value
Cambridge	1,000	1,000
Oxford	965	978
London School of Economics	945	927
St Andrews	938	923
Durham	887	901
Imperial College London	897	899
Loughborough	889	867
Bath	876	846
Warwick	844	832
University College London	859	785



Times and Sunday Times Good University Guide 2025 Summary

For further information and methodology see: [The Times and Sunday Times Good University Guide on the tableau server](#)



Institution	2023		2024		2025	
	Avg. R.	Value	Avg. R.	Value	Avg. R.	Value
London School of Economics and Political Science	4	954.0	4	954.0	1	1,000.0
University of St Andrews	2	992.0	1	1,000.0	2	988.0
University of Oxford	1	1,000.0	2	976.0	3	985.0
University of Cambridge	3	991.0	3	969.0	4	950.0
Durham University	6	880.0	7	859.0	5	898.0
Imperial College London	5	939.0	5	883.0	6	888.0
University College London	7	878.0	6	877.0	7	882.0
University of Warwick	9	863.0	9	838.0	9	856.0
Loughborough University			10	814.0	10	837.0



Section 8: International League Tables

International league tables compare 400-500 top universities worldwide:

- **QS World University Rankings** – updates in June
- **Academic Ranking of World Universities (ARWU)**, also known as the Shanghai Jiao Tong – updates in August
- **Times Higher Education World University Rankings (THE)** – updates in late September

The international rankings offer a more generalised approach, usually focused on research (due to comparable data availability across the globe).

However, they are increasingly diversifying across different sub-divisions including subject, region, and sustainability.



Methodology Summary – International League Tables

QS World University Rankings:

- Uses QS-owned metrics, including 45% based on QS own reputation surveys (academic and employer)
- Remaining indicators are student/staff ratios (SSR), Citations, International Student Diversity, and Sustainability

Academic Ranking of World Universities (ARWU):

- Highly stable, research-oriented table, weighted for a bias towards recency
- Nobel Prize/Fields Medal alumni and current staff
- Other indicators are citations and publications impact, with a focus on *Nature & Science* journals

Times Higher Education World University Rankings (THE)

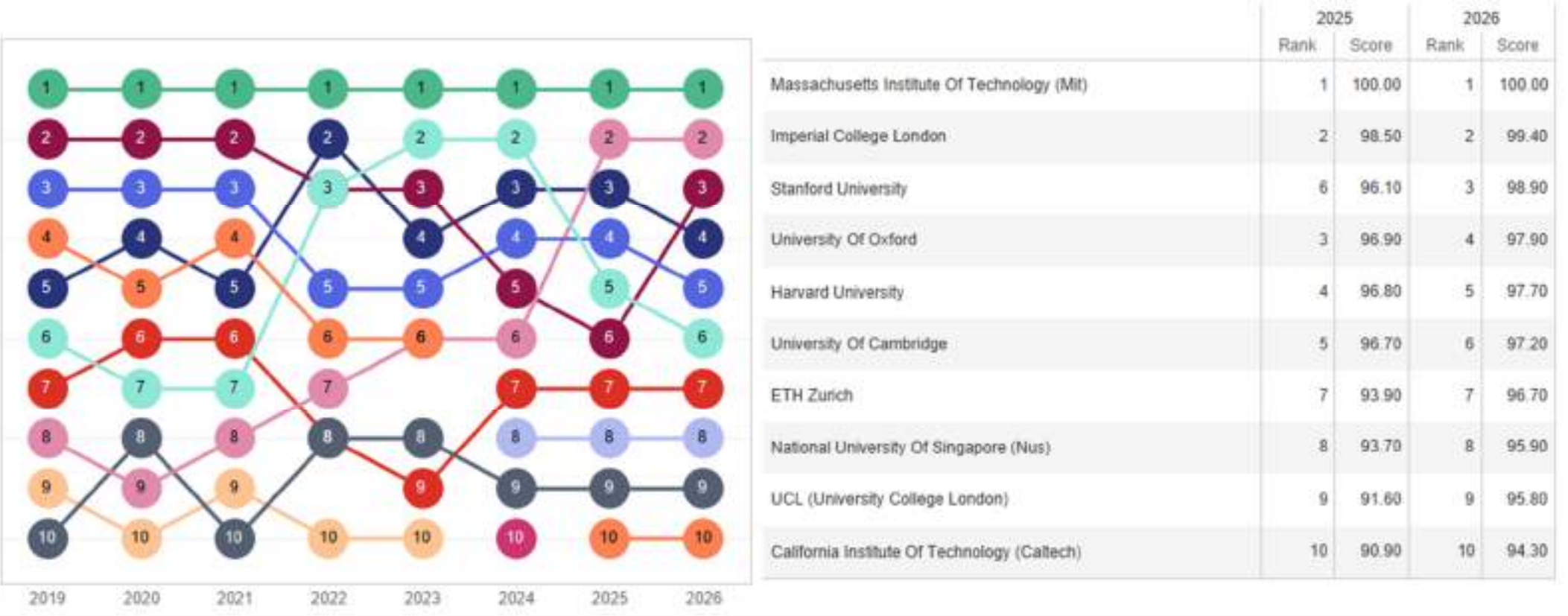
- Uses reputation surveys (teaching and research) but assigns lower weighting than QS
- Large number of other indicators, grouped under Citations & Research Quality, Research Environment, Industry, International Outlook, and Teaching

Ranking summary – International Tables

International rankings	2019	2020	2021	2022	2023	2024	2025	2026
QS World University Rankings	6	7	7	3	2	2	5	6
Academic Ranking of World Universities	3	3	3	4	4	4	4	
The Times Higher World University Rankings	2	3	6	5	3	5	5	

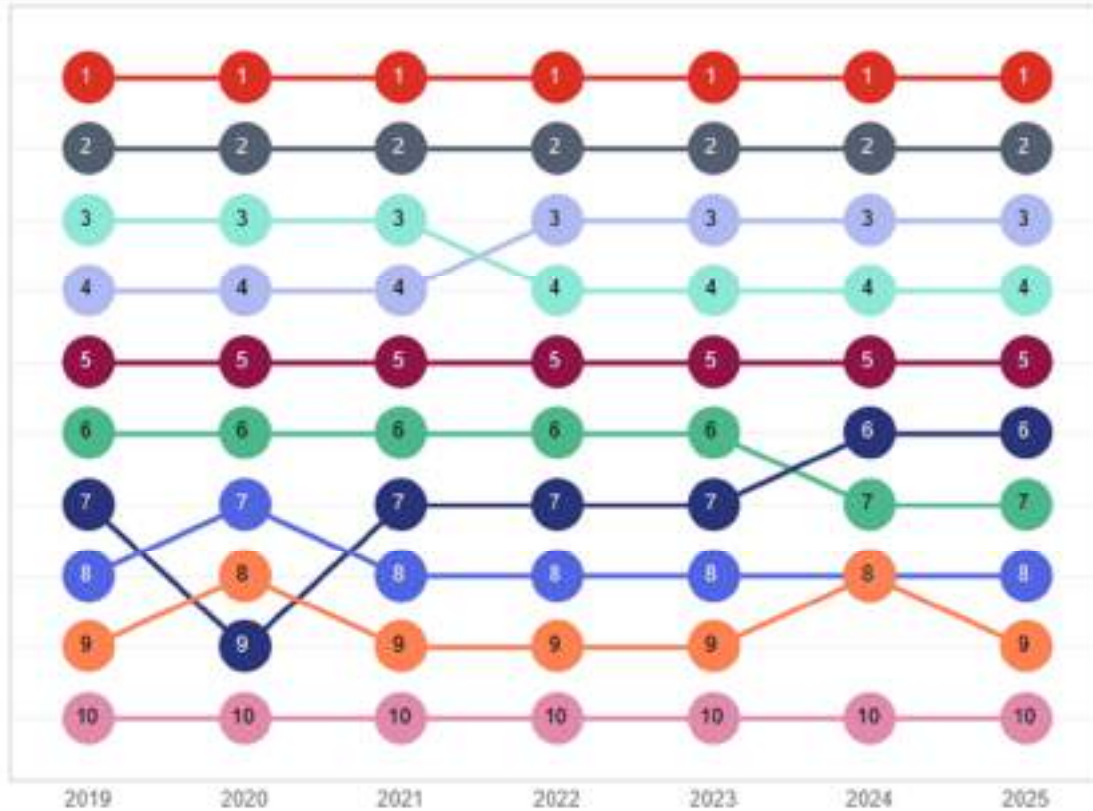
QS World Universities Ranking 2026 Summary

For further information and methodology see: [QS World University Rankings on the tableau server](#)



Academic Ranking of World Universities (ARWU) 2025 Summary

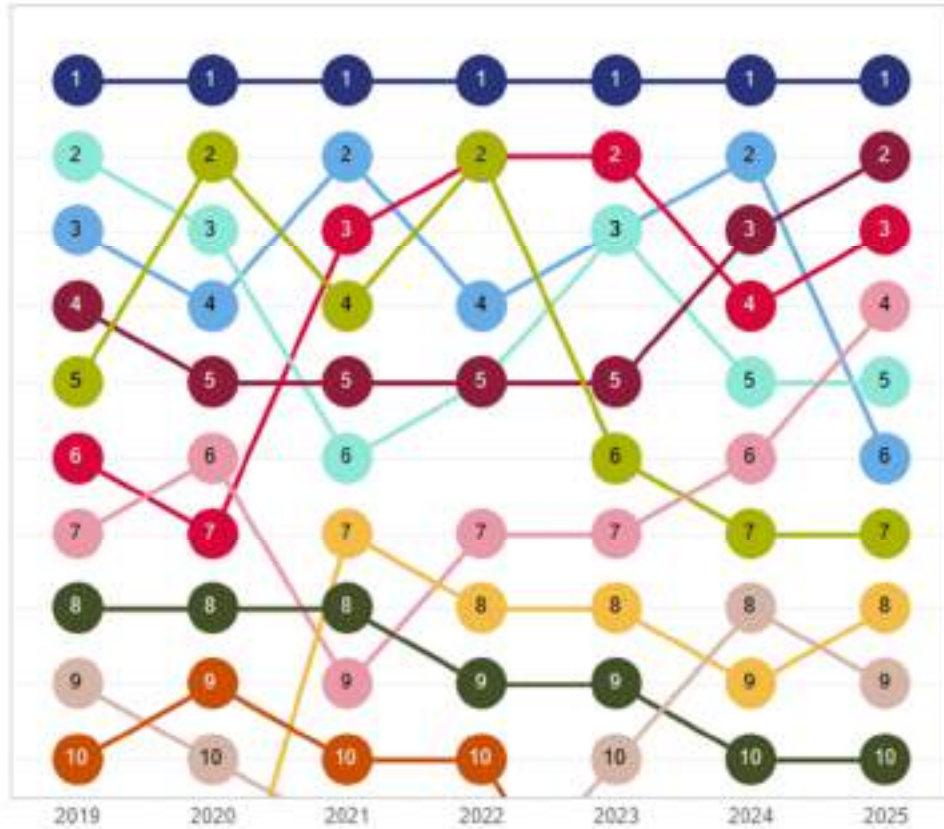
For further information and methodology see: [The Academic Ranking of World Universities \(ARWU\) on the tableau server](#)



University name	2024		2025	
	Avg. V..	Avg. W..	Avg. V..	Avg. W..
Harvard University	100.0	1	100.0	1
Stanford University	75.6	2	76.8	2
Massachusetts Institute of Technology	69.5	3	71.2	3
University of Cambridge	67.8	4	68.6	4
University of California, Berkeley	62.0	5	61.8	5
University of Oxford	60.0	6	61.0	6
Princeton University	58.8	7	59.4	7
Columbia University	55.1	8	55.8	8
California Institute of Technology	55.1	8	55.5	9
University of Chicago	54.4	10	54.2	10

Times Higher Education World University Rankings (THE) 2025 Summary

For further information and methodology see: [Times Higher Education \(THE\) World University Rankings on the tableau server](#)



Institution	2024		2025	
	Avg. World Rank	Score	Avg. World Rank	Score
University of Oxford	1	98.50	1	98.50
Massachusetts Institute of Technology	3	97.90	2	98.10
Harvard University	4	97.80	3	97.70
Princeton University	6	96.90	4	97.50
University of Cambridge	5	97.50	5	97.40
Stanford University	2	98.00	6	97.20
California Institute of Technology	7	96.50	7	96.30
University of California, Berkeley	9	94.60	8	94.50
Yale University	10	94.20	10	94.10